

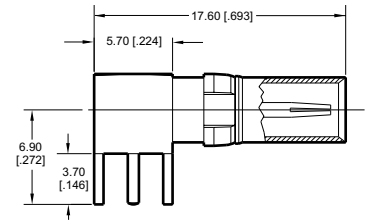
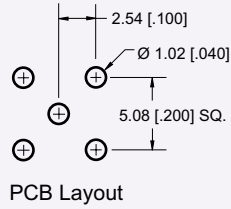


# 5500 Series DIN Contacts

## Coaxial Contacts Right Angle PCB Termination

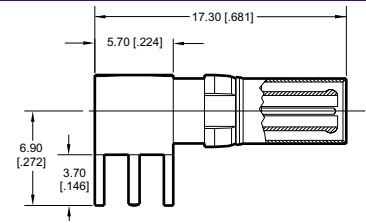
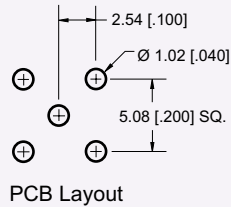
P/N 55-2P-304-1

50 Right Angle Plug  
PCB Termination



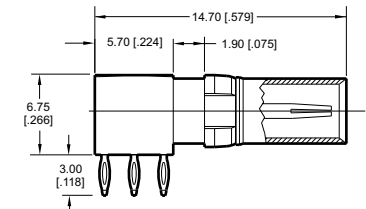
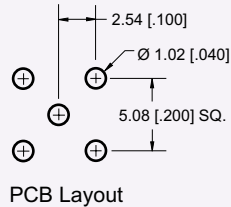
P/N 55-2S-201-1

50 Right Angle Socket  
PCB Termination



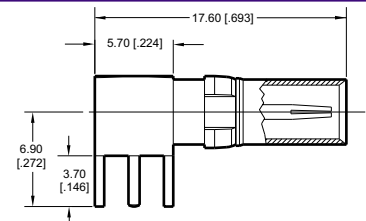
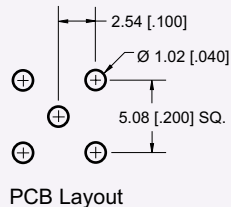
P/N 55-2P-385-1

50 Right Angle Plug  
Press Fit



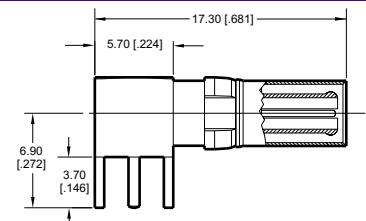
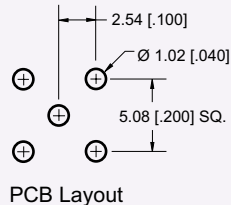
P/N 55-3P-304-1

75 Right Angle Plug  
PCB Termination



P/N 55-3S-304-1

75 Right Angle Socket  
PCB Termination



Dimensions are in mm[inch].