



1100 Series Card Edge Connector

.100" X .200" Contact Spacing, ISA Bus

Specifications

Insulator Material: Glass filled polyester, type PBT, 94 V-O, UL Rated.

Contact Material: Phosphor Bronze Alloy

Contact Plating: Gold and/or Tin over .000050" Nickel, (See Contact Plating Options).

Current Rating: 3 amp at 30°C

Contact Resistance:
Contact to Daughter Card:
10 m max.

Insulation Resistance:
5000 M min.

Dielectric Withstand Voltage:
1000 V AC

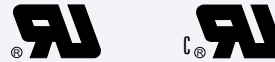
Daughter Board Insertion Force:
16 oz max. per contact pair when tested with a .071" thick gage.

Daughter Board Withdrawal Force:
1 oz min. per contact pair when tested with a .054" thick gage.

Operating Temperature:
-54°C to +125°C

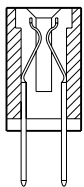
Features

- Extra large chamfered entry
- Conforms to Bell-core spec TR-TSY-00078
- Extended card scoops available
- Replaceable contacts
- Molded in polarization available between contact, or on contact position.
- De-population of contacts per customer specification.
- Available in selective gold plate at contact point
- Many other custom options available, including, but not limited to:
 - Single or Both Ends Open
 - Shorting Contacts

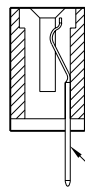


Recognized under the recognized component Program of Underwriters Laboratories, Inc. File Numbers: E146967 and E176234

READ OUT



D = Dual Load

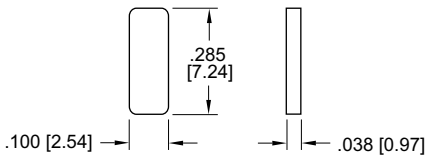


H = Half Load

Even Number Side

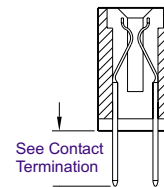
KEY IN BETWEEN CONTACTS (ORDER SEPARATELY)

P/N 11-PK1



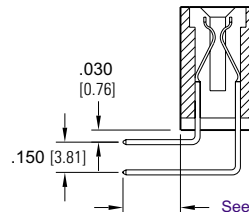
CONSULT FACTORY FOR MOLDED IN KEY

TERMINATION TYPE



See Contact Termination

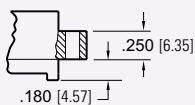
1 = STRAIGHT



See Contact Termination

2 = RIGHT ANGLE

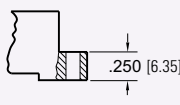
MOUNTING STYLE



1 = Clearance Hole



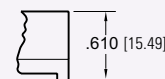
2 = #4-40 Threaded Insert



3 = Flush Mount



4 = #4-40 Threaded Insert

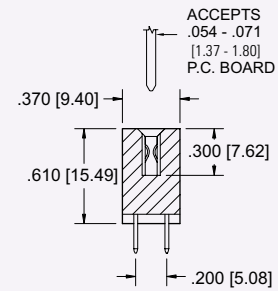
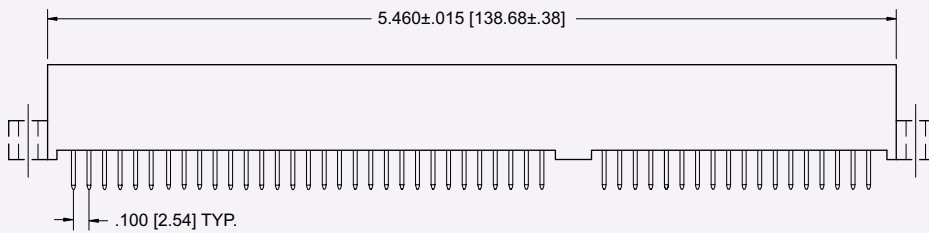
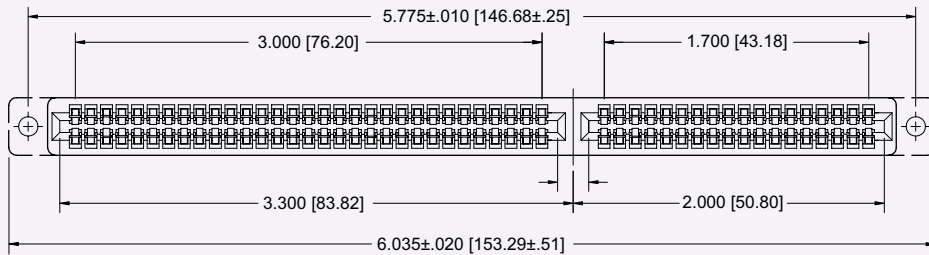
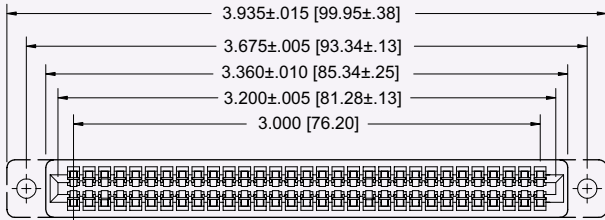
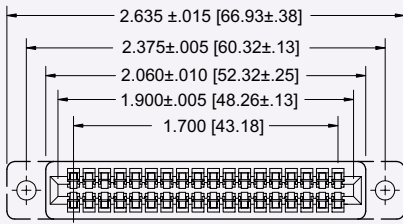
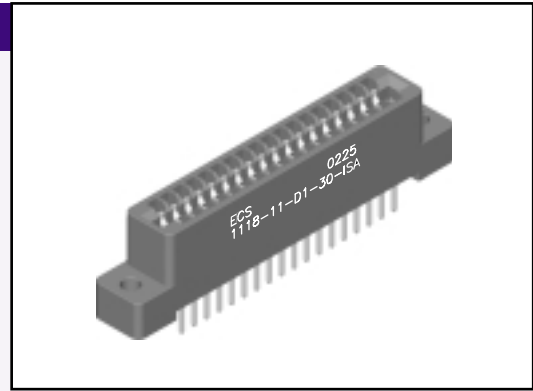


5 = No Mounting Ear



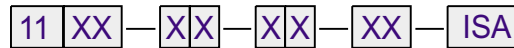
6 = Side Mounting

.100" x .200" Contact Spacing, ISA Card Edge



Dimensions are in inch [mm]

PART NUMBERING



SERIES CODE
 .100" x .200" Centers Card Edge ISA Bus

NO. CONTACT PAIRS
 18
 31
 49 (18,31)

TERMINATION TYPE
 1 = Straight
 2 = Right Angle

MOUNTING STYLE
 1 = Clearance Hole
 2 = #4-40 Threaded Insert
 3 = Flush Mount
 4 = Flush Mount / #4-40 Threaded Insert
 5 = No Mounting Ear
 6 = Side Mounting

CONTACT TERMINATION
 1 = .190 [4.83] Dip Solder
 2 = .100 [2.54] Dip Solder
 3 = .560 [14.22] Wire Wrap
 4 = .100 [2.54] Right Angle
 5 = .180 [4.57] Right Angle

READ OUT
 D = Dual Load
 H = Half Load

PLATING
 50µ" Nickel Underplate
CONTACT **TAIL**
 10 = 10µ" Au 100µ" Sn
 20 = 15µ" Au 100µ" Sn
 30 = 30µ" Au 100µ" Sn

CONSULT FACTORY FOR CONNECTORS BUILT TO YOUR SPECIFICATION