

2.0 mm HM B-19 Right Angle Female

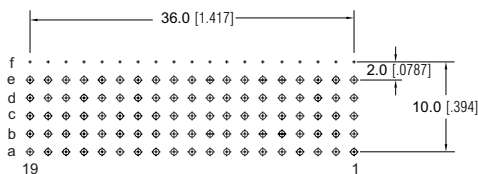
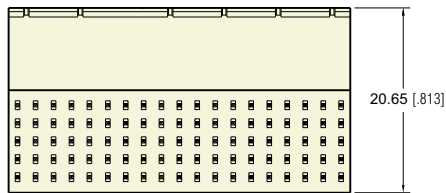
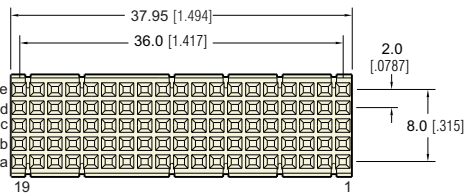


SPECIFICATION

1. Insulator Material: PBT 30% Glass filled UL 94 V-O
2. Contact Material: Copper Alloy
3. Shield Material: Copper Alloy
4. Contact Plating:
 - Contact Area: Gold
 - Compliant Area: Matte Tin
 - Performance: Class 1: 500 cycles
 - Class 2: 250 cycles
6. Shield Plating:
 - Contact Area: Gold
 - Compliant Area: Matte Tin
7. Temperature Range: -55 C to +125 C
8. Contact Resistance: 20 M Ω Max.
9. Insulation Resistance: 10 M Ω Max.
10. Working Current: 1.5 ADC (Signal)
11. Test Voltage: AC 750 V Min.
12. Compliant Section:
 - Insertion Force: 100 N per contact Max.
 - Withdrawal Force: 20 N per contact Min.
13. Mating Force: .75 N per pin Max.
14. Withdrawal Force: .15 N per pin Max.
15. PCB Hole Size Requirements:
 - Drilled Hole Diameter: 0.7 ± 0.02 mm
 - Finished Hole Diameter: 0.6 ± 0.05 mm
16. Recommended PCB Thickness: 1.6mm Min.
17. IEC 61076-4-101 Standard

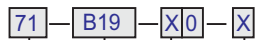
The **E-Z met™** Type B-19 connector provides 95 contacts. These connectors are available either with or without integrated upper ground return shields. Lower ground return shields may be ordered separately.

The Type B-19 connector is used in the J3 position on the Compact PCI® daughtercard. This connector is not designed to be used alone, but may be used together with either a Type A, C, L, M or N **E-Z met™** connector.



BOARD LAYOUT

PART NUMBERING



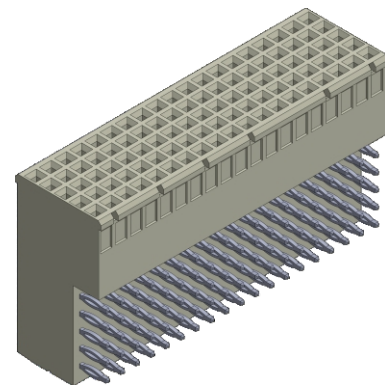
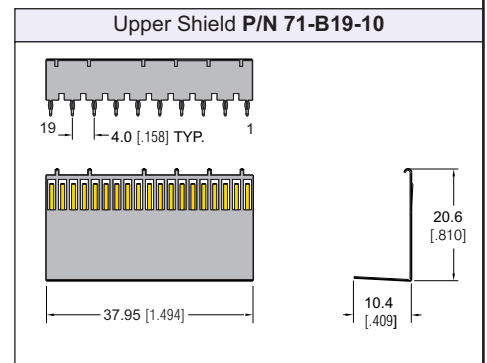
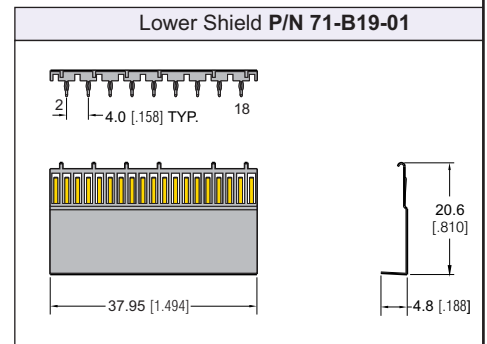
SERIES CODE
2mm Hard Metric Female

TYPE
B19

UPPER SHIELD
0 = Without Upper Shield
1 = With Upper Shield

CONTACT LOADING

- 1 = A, B, C, D, E
- 2 = A, B, C, D
- 3 = A, B, C
- 4 = A, D, E
- 5 = B, D



Dimensions are in mm [inch]