

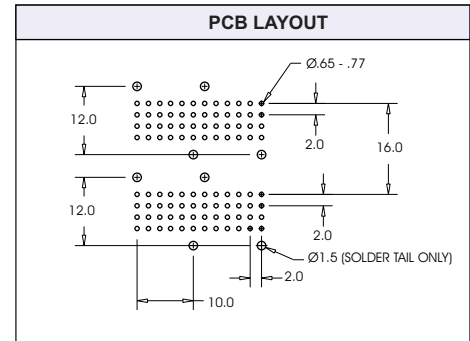
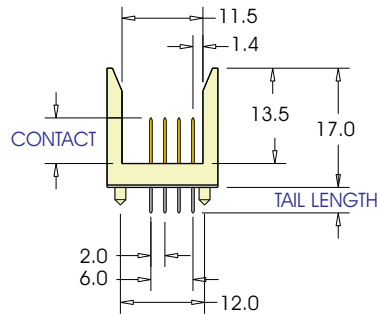
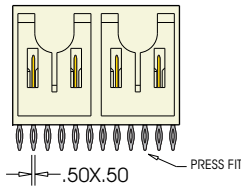
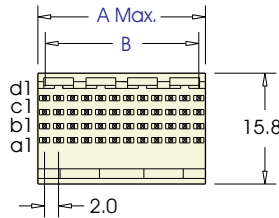
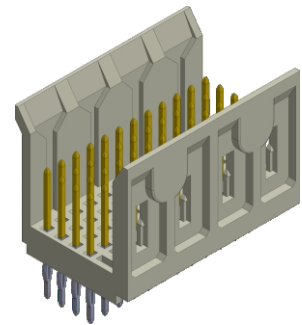
# 2.0mm FutureBus 4 Row Male Vertical



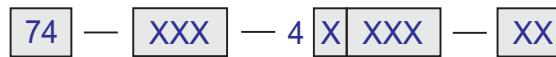
Contact	Dim A	Dim B
24	11.95	10.00
48	23.95	22.00
72	35.95	34.00
96	47.95	46.00
120	59.95	58.00
144	71.95	70.00
168	83.95	82.00
192	95.95	94.00

## Specifications

1. Insulator Material: Liquid Crystal Polymer (LCP) 94V-O, UL Recognized.
2. Contact Material: Phosphor Bronze or Brass
3. Contact Plating: Gold and/or Tin over Nickel (see contact plating options)
4. Compliant Insertion Force: 22.1 lbs max. per contact
5. Compliant Withdrawal Force: 4.4 lbs min. per contact
6. Insulation Resistance: 1000 M ohms min. @ 500v
7. Contact Resistance: 30 m ohms max. @ DC 100mA
8. Dielectric Withstand Voltage: 1000 VAC for 1 min.
9. Current Rating: 1 Amp @ 20°C per contact
10. Operating Temperature: -55°C To +125°C
11. UL File Numbers: E 176234, IEEE 896.10 FutureBus+



## PART NUMBERING



SERIES CODE

NO. OF CONTACTS  
SEE TABLE ABOVE

TERMINATION METHOD  
1 = PRESS FIT  
2 = DIP SOLDER (picture not shown)

### CONTACT PLATING

.000050" Nickel underplate  
MATING TAIL  
01 = Au Flash 100µ"Sn  
10 = 10µ" Au 100µ"Sn  
30 = 30µ" Au 100µ"Sn  
90 = 30µ" Au 30µ" Au

### CONTACT LOADING

P/N CODE	001	002	003	101	102	103	201	202	203	301	302	303	401	402	403
TERMINATION*	PF/DS	PF	PF	PF/DS	PF	PF	PF/DS	PF	PF	PF/DS	PF	PF	PF/DS	PF	PF
(A) CONTACT	5.0mm	5.0mm	5.0mm	5.75mm	5.75mm	5.75mm	6.5mm	6.5mm	6.5mm	7.25mm	7.25mm	7.25mm	8.0mm	8.0mm	8.0mm
(B) TAIL LENGTH	4.3mm	13.6mm	17.0mm	4.3mm	13.6mm	17.0mm	4.3mm	13.6mm	17.0mm	4.3mm	13.6mm	17.0mm	4.3mm	13.6mm	17.0mm

\*PF = PRESS FIT  
DS = DIP SOLDER

FOR CUSTOM LOADED CONNECTORS PLEASE USE THIS CUSTOMER REQUEST FORM