

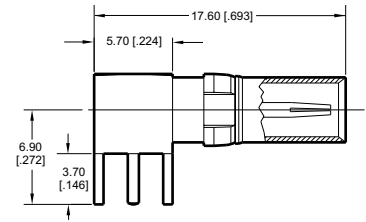
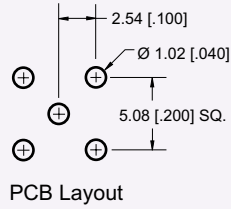


5500 Series DIN Contacts

Coaxial Contacts Right Angle PCB Termination

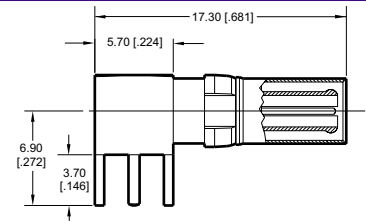
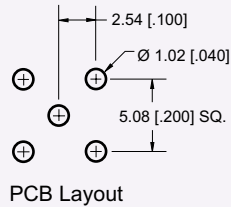
P/N 55-2P-304-1

**50 Right Angle Plug
PCB Termination**



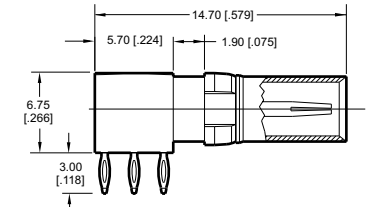
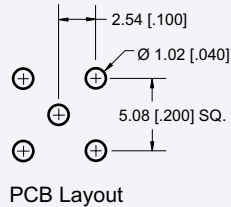
P/N 55-2S-201-1

**50 Right Angle Socket
PCB Termination**



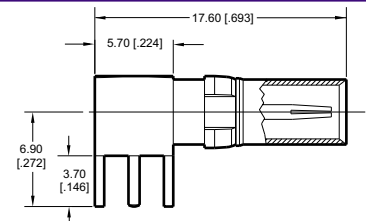
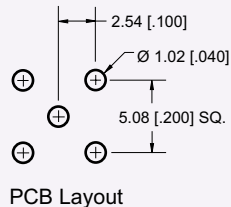
P/N 55-2P-385-1

**50 Right Angle Plug
Press Fit**



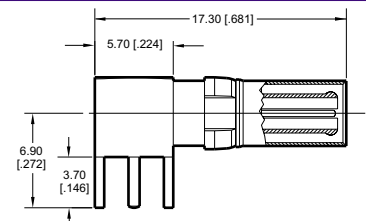
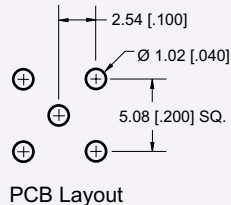
P/N 55-3P-304-1

**75 Right Angle Plug
PCB Termination**



P/N 55-3S-304-1

**75 Right Angle Socket
PCB Termination**



Dimensions are in mm[inch].