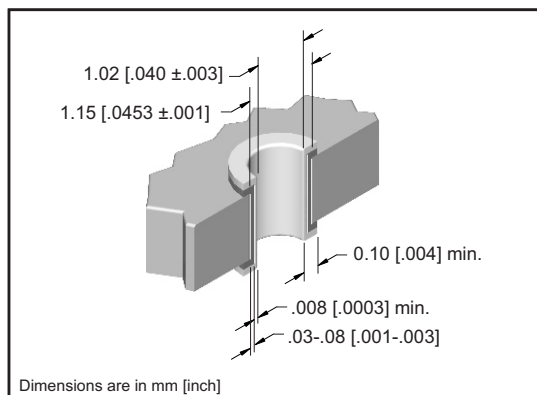


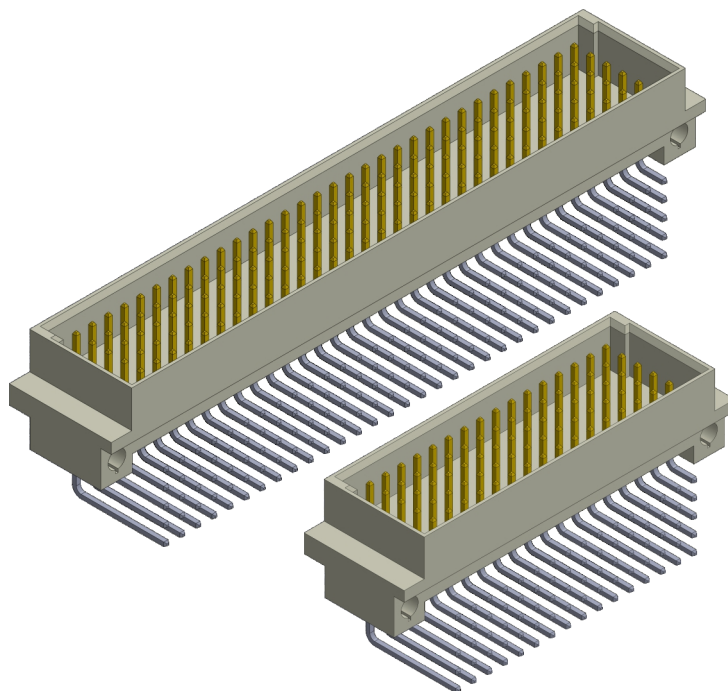
# Type E160, E80 5 Row Right Angle Male DIN



DIN 41612 SPECIFICATION				
Temperature Range		-55°C to +125°C		
Insulator Material		PBT 30% Glass Filled UL 94 V-0 Rated		
Contact Material:		Copper Alloy		
Contact Plating / Performance Per DIN 41612	Level 1	≥ 500 Mating Cycles		
	Level 2	≥ 400 Mating Cycles		
	Level 3	≥ 50 Mating Cycles		
Contact Resistance		≤ 20m Ω		
Insulation Resistance		≥ 10 <sup>12</sup> m Ω at 100 VDC		
Dielectric Strength		≤ 1000 VDC		
Current Range at Ambient Temp. Of	+20C	3.0 Amp		
	+70C	2.0 Amp		
	+100C	1.0 Amp		
Insertion Force (N)		20 contacts @ ≤18	48 contacts @ ≤45	128 contacts @ ≤100
		30 contacts @ ≤28	64 contacts @ ≤60	160 contacts @ ≤110
		32 contacts @ ≤30	96 contacts @ ≤90	
Withdrawal Forces Per Contact (N)		> .15		



DRILLED HOLE DIAMETER	PLATING THICKNESS	HOLE DIAMETER	PAD DIAMETER	
1.15 [.0453]	Copper .03-.08 [.001-.003]	After Plating .040±.003	1.65 [.065]	
	Tin .008 [.0003]min.			



## APPROVALS



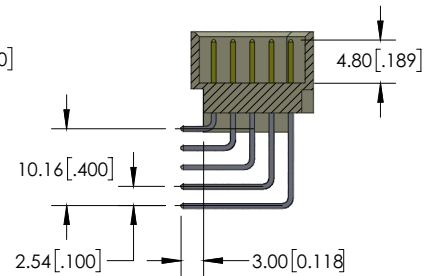
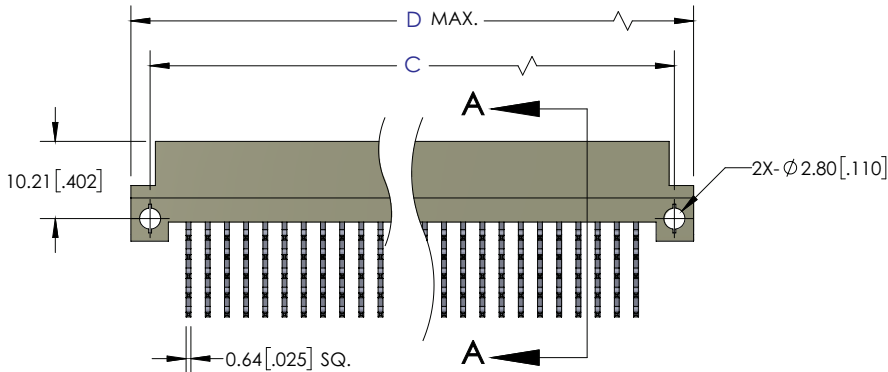
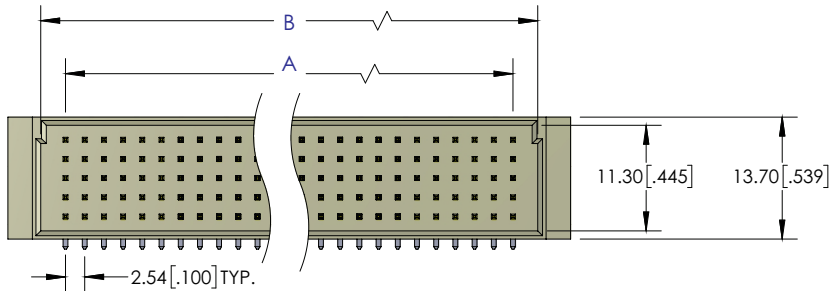
Recognized under the recognized component Program of Underwriters Laboratories, Inc.  
File Numbers: E176234

IEC 60603-2 Standard

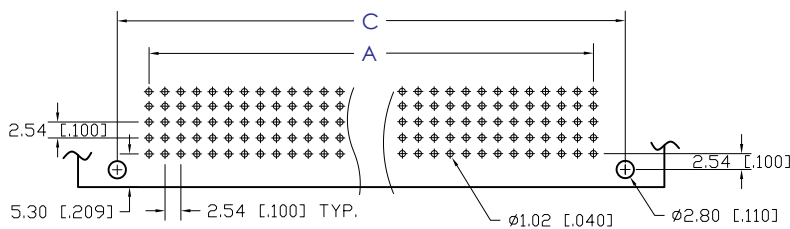
## Bellcore GR 1217 CORE

Connectors are available that meet the requirements of Bellcore GR 1217-CORE. Please consult factory for ordering information.

# Type E160, E80 5 Row Right Angle Male DIN



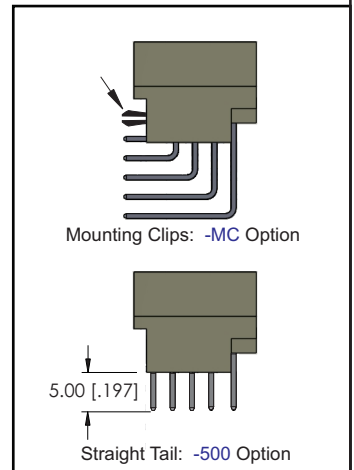
SECTION A-A



P.C.B. LAYOUT

CONTACTS	A	B	C	D
80	38.10 [1.500]	44.60 [1.756]	48.26 [1.900]	54.00 [2.126]
160	78.74 [3.100]	85.20 [3.354]	88.90 [3.500]	94.00 [3.700]

Consult Factory for other Contact Positions



## PART NUMBERING



### SERIES CODE

DIN 41612 Type E160, E80 5 ROW

### BODY STYLE

- 1 = E80 (80 positions)
- 2 = E160 (160 positions)

### NUMBER OF CONTACTS

- 7 = 160
- 8 = 80

### CONTACT ARRANGEMENT

- 1 = Row A, B, C, D, E fully populated
- Consult Factory for other Loading Options

- Blank = No Mounting Clip
- MC = Mounting Clip
- 500 = Straight Tail

### TAIL PLATING

- 1 = Tin
- 2 = Gold flash (.200" from pin tip)
- 3 = Gold plate 30µ" thick min. (.200" from pin tip)

### MATING AREA PLATING

- 1 = Class 1
- 2 = Class 2
- 3 = Class 3

### EMLB/LMEB CONTACTS

- 2 = Standard Pin Loading
- 1 = EMLB / LMEB Contacts Required (Consult Factory for EMLB / LMEB Contact Locations)

Dimensions are in mm [inches]