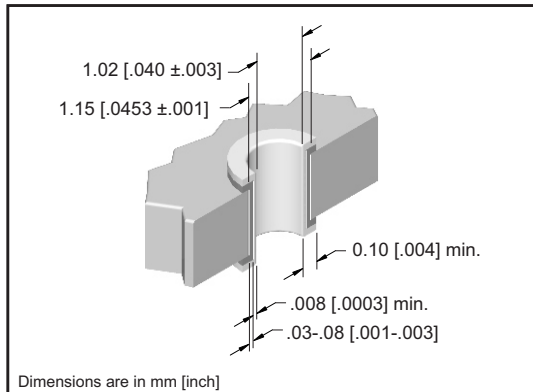


# Type E, E/2 Vertical Female DIN



## DIN 41612 SPECIFICATION

Temperature Range	-65°C to +125°C	
Insulator Material	PBT 30% Glass Filled UL 94 V-0 Rated	
Contact Material:	Copper Alloy	
Contact Plating / Performance	Level 1	≥ 500 Mating Cycles
	Level 2	≥ 400 Mating Cycles
Per DIN 41612	Level 3	≥ 50 Mating Cycles
Contact Resistance	≤ 20m Ω	
Insulation Resistance	≥ 10 <sup>12</sup> m Ω at 100 VDC	
Dielectric Strength	≤ 1000 VDC	
Current Range at Ambient Temp. Of	+20C	3.0 Amp
	+70C	2.0 Amp
	+100C	1.0 Amp
Insertion Force (N)	≤ 100	
Withdrawal Forces Per Contact (N)	≥ .15	



DRILLED HOLE DIAMETER	PLATING THICKNESS	HOLE DIAMETER	PAD DIAMETER	INSERTION FORCE PER PIN	WITHDRAWAL FORCE PER PIN
1.15 [.0453]	Copper .03-.08 [.001-.003] Tin .008 [.0003]min.	After Plating .040±.003	1.65 [.065]	40 lbs. Max.	10 lbs. Min.

## APPROVALS

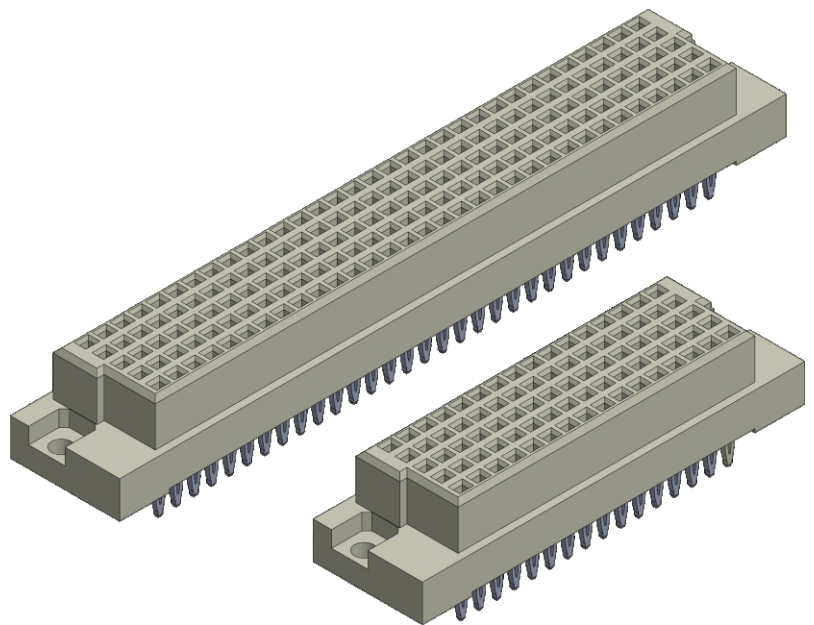


Recognized under the recognized component Program of Underwriters Laboratories, Inc.  
File Numbers: E176234

## IEC 60603-2 Standard

## Bellcore GR 1217 CORE

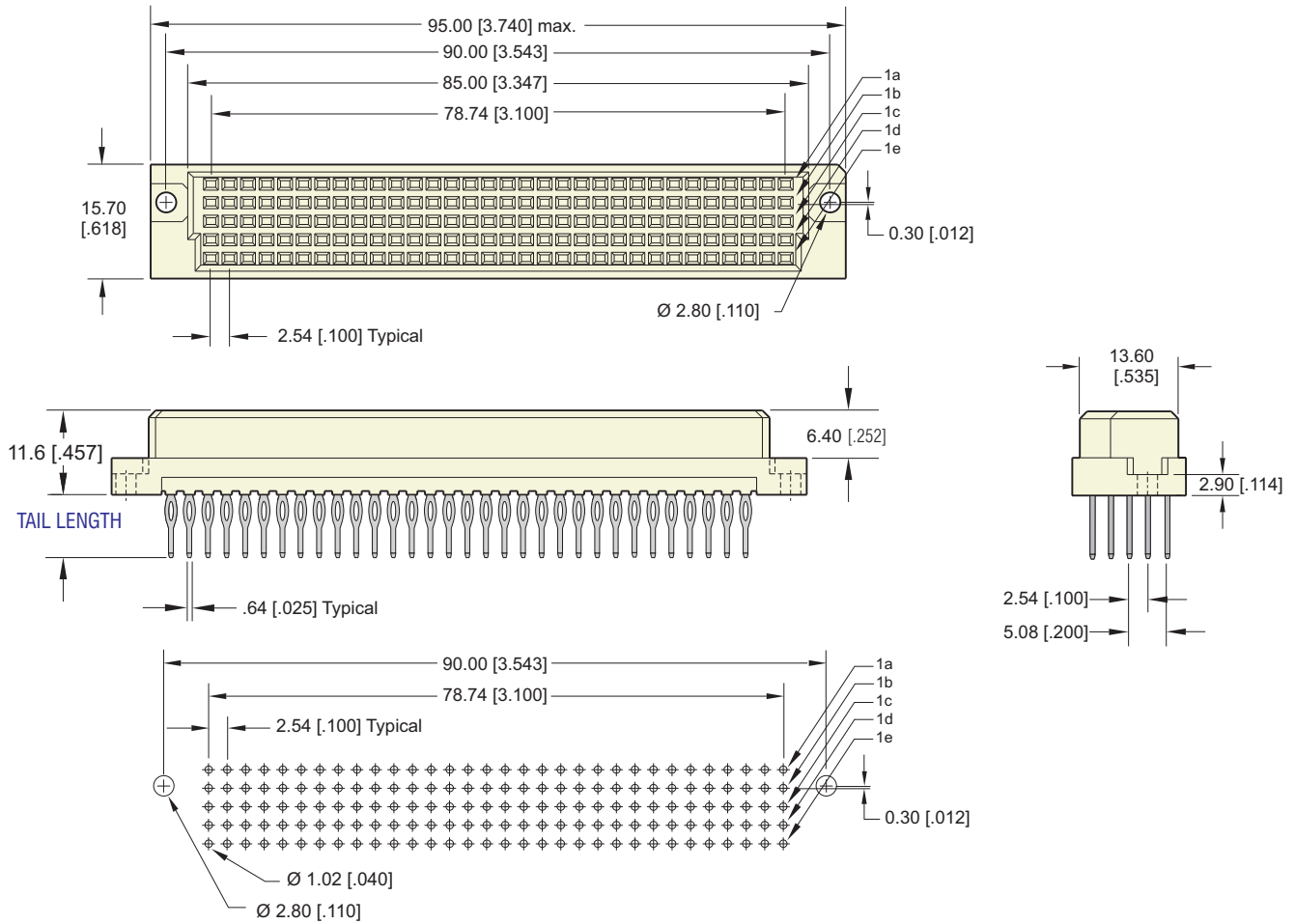
Connectors are available that meet the requirements of Bellcore GR 1217-CORE. Please consult factory for ordering information.



# Type E, E/2 Vertical Female DIN

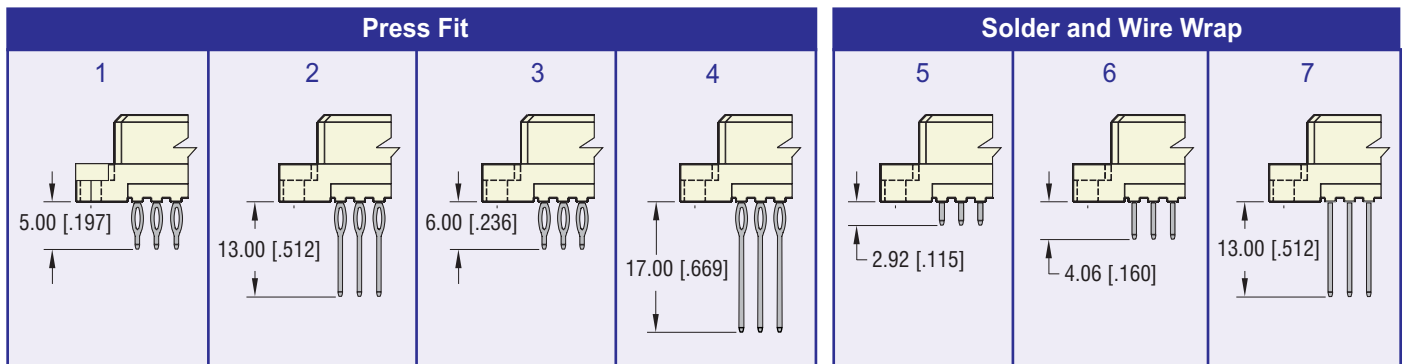


## Type E, 160 Positions



Recommended P. C. Board Layout

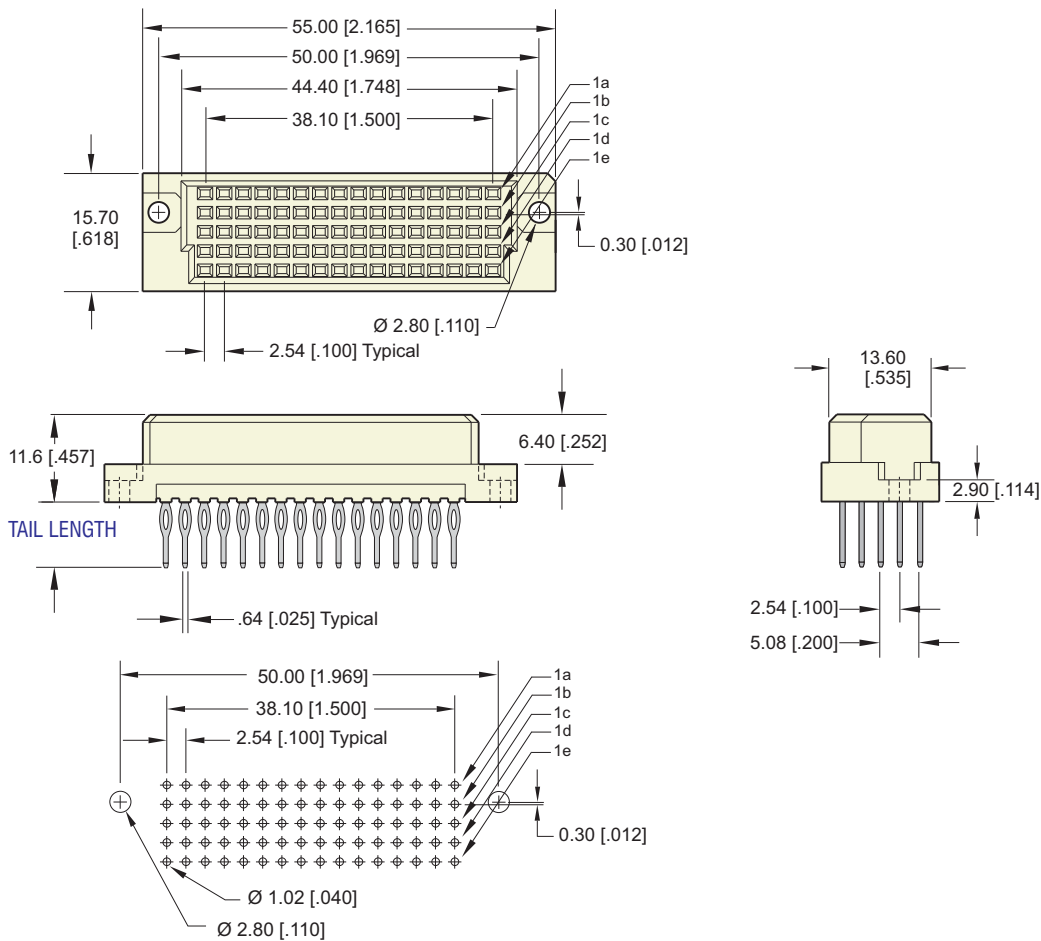
## TAIL LENGTH OPTIONS



# Type E, E/2 Vertical Female DIN



Type E/2, 80 Positions



Recommended P. C. Board Layout

## PART NUMBERING

