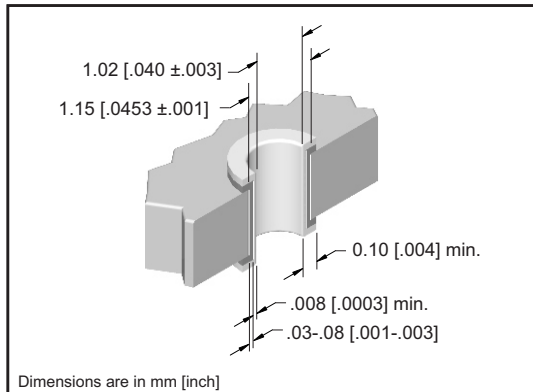


Type RD, RD/2, Vertical Male DIN



DIN 41612 SPECIFICATION

Temperature Range	-65°C to +125°C	
Insulator Material	PBT 30% Glass Filled UL 94 V-0 Rated	
Contact Material:	Copper Alloy	
Contact Plating / Performance	Level 1	≥ 500 Mating Cycles
	Level 2	≥ 400 Mating Cycles
Per DIN 41612	Level 3	≥ 50 Mating Cycles
Contact Resistance	≤ 20m Ω	
Insulation Resistance	≥ 10 ¹² m Ω at 100 VDC	
Dielectric Strength	≤ 1000 VDC	
Current Range at Ambient Temp. Of	+20C	3 Amp
	+70C	2 Amp
	+100C	1 Amp
Insertion Force (N)	≤ 100	
Withdrawal Forces Per Contact (N)	≥ .15	



DRILLED HOLE DIAMETER	PLATING THICKNESS	HOLE DIAMETER	PAD DIAMETER	INSERTION FORCE PER PIN	WITHDRAWAL FORCE PER PIN
1.15 [.0453]	Copper .03-.08 [.001-.003]	After Plating .040±.003	1.65 [.065]	40 lbs. Max.	10 lbs. Min.
	Tin .008 [.0003]min.				

APPROVALS

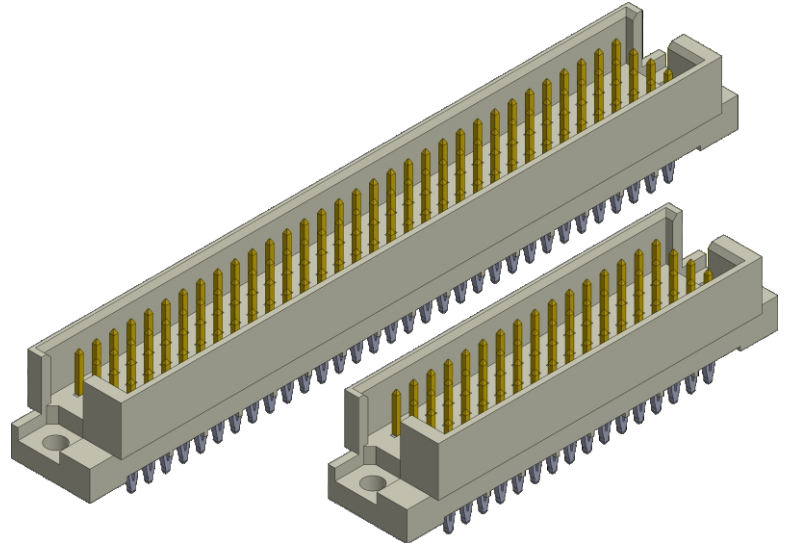


Recognized under the recognized component Program of Underwriters Laboratories, Inc.
File Numbers: E176234

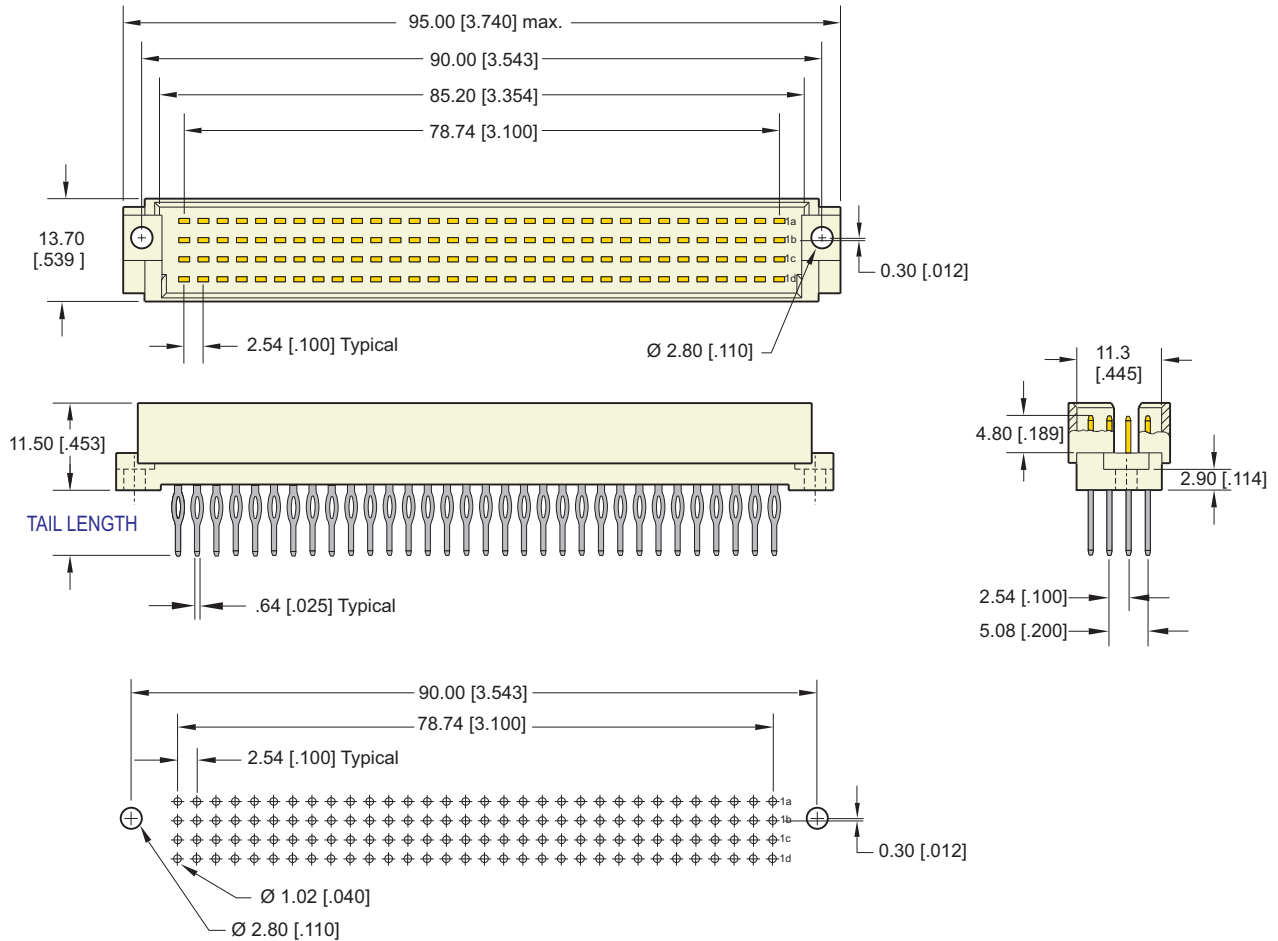
IEC 60603-2 Standard

Bellcore GR 1217 CORE

Connectors are available that meet the requirements of Bellcore GR 1217-CORE. Please consult factory for ordering information.

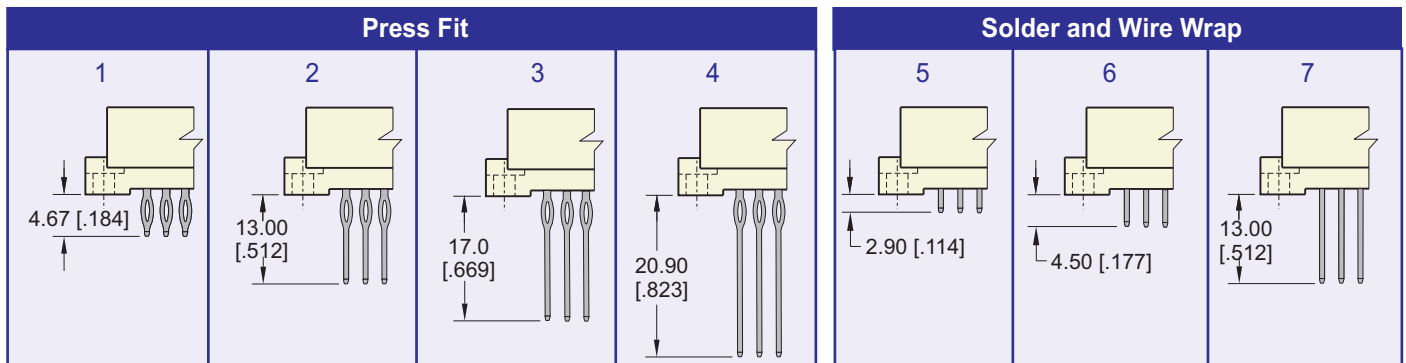


Type RD, 128 Positions

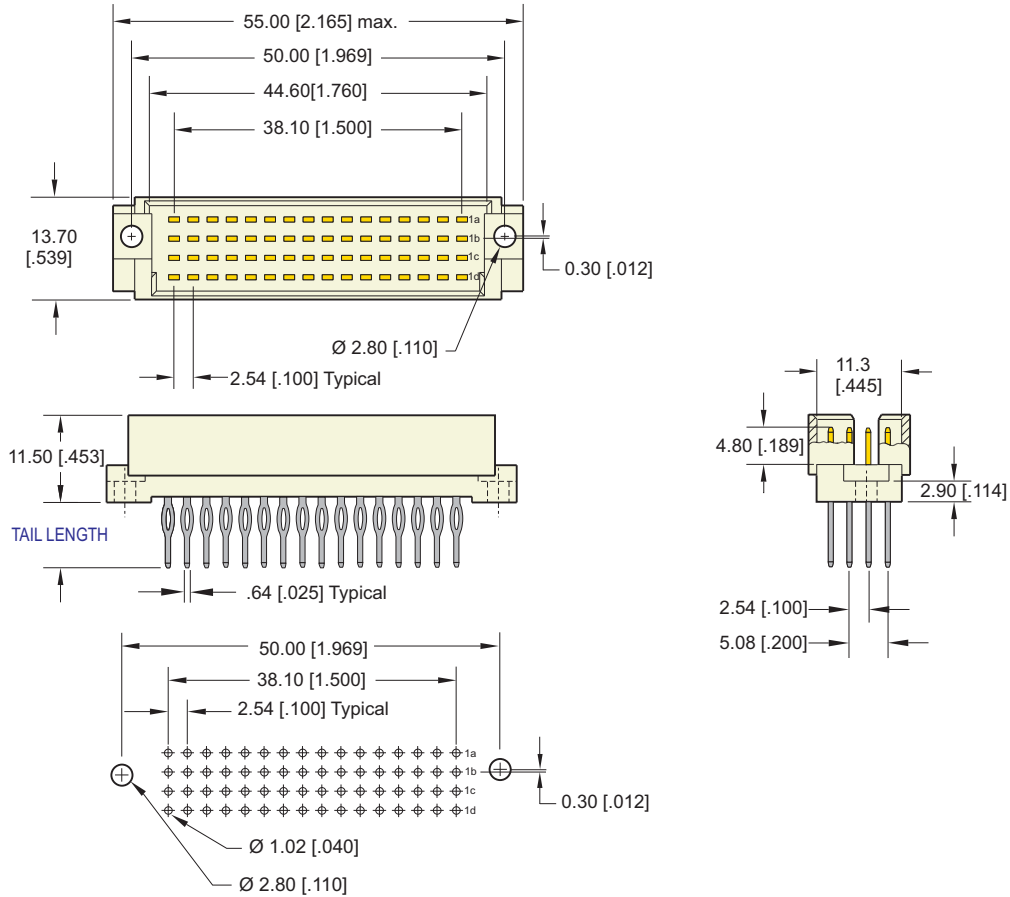


Recommended P. C. Board Layout

TAIL LENGTH OPTIONS



Type RD/2, 64 Positions



Recommended P. C. Board Layout

PART NUMBERING



SERIES CODE

Type RD, RD/2 Male

BODY STYLE

- 1 = RD/2 (64 positions)
- 2 = RD (128 positions)

NUMBER OF CONTACTS

- 1 = 16
- 2 = 32
- 3 = 48
- 4 = 64
- 5 = 96
- 6 = 128

CONTACT ARRANGEMENT

- 1 = Row A, B, C and D fully populated
- Consult Factory for other Loading Options

TAIL PLATING

- 1 = Tin / Lead
- 2 = Gold flash (.200" from pin tip)
- 3 = Gold plate 30µ" (.200" from pin tip)
- 4 = Gold plate 15µ" (.200" from pin tip)

MATING AREA PLATING

- 1 = Class 1
- 2 = Class 2
- 3 = Class 3

TAIL LENGTH

- 1 = 4.67 [.184] Press-Fit
- 2 = 13.00 [.512] Press-Fit
- 3 = 17.00 [.669] Press-Fit
- 4 = 20.90 [.823] Press-Fit
- 5 = 2.90 [.114] Dip Solder
- 6 = 4.50 [.177] Dip Solder
- 7 = 13.00 [.512] Dip Solder Wire Wrap

Note: Press Fit Connectors required a press in tool.
Consult Factory for Press In Tool information.