



Specifications

Insulator Material: Glass filled polyester, type PBT, 94-VO, UL Recognized.
Contact Material: Phosphor Bronze Alloy CA510
Contact Plating: Gold over 50 μ m Nickel, and Tin Lead (See part numbering for thicknesses).
Current Rating: 3 amp at 30°C
Contact Resistance:
 Contact to Daughter Card:
 10m ohms
 Compliant section to P.T.H.:
 2m ohms
Insulation Resistance:
 5000M ohms
Dielectric Withstand Voltage:
 1000 V AC
Compliant Section Insertion Force:
 40 lbs max per contact
Compliant Section Withdrawal Force:
 10 lbs min per contact
Hole Size Requirements:
 Drilled Hole Dia.: .0378 \pm .001
 Plating: .001 to .003 copper and .0003 min Tin.
Finished Hole Diameter:
 .032 - .035
Recommended Board Thickness: .093 to .125

Features

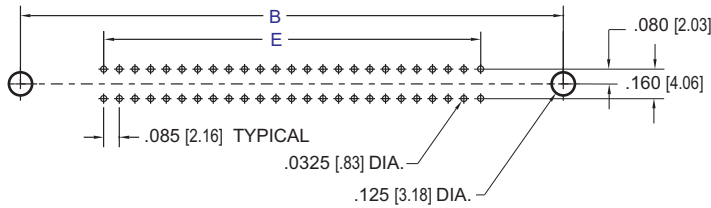
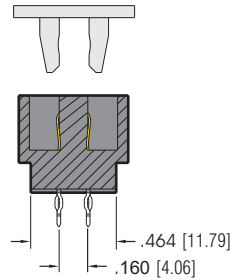
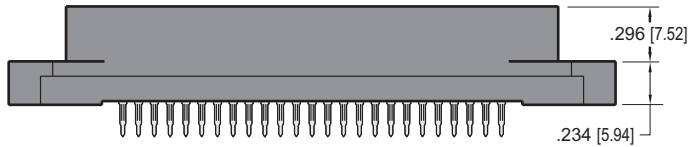
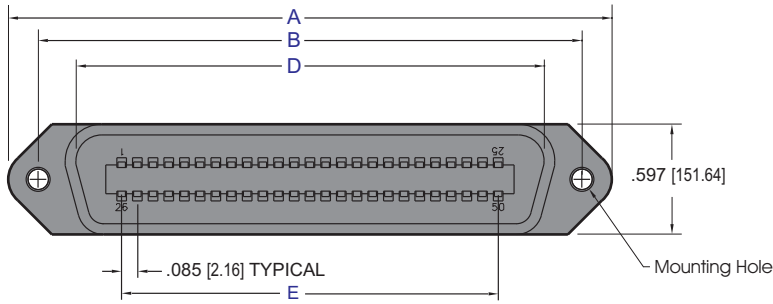
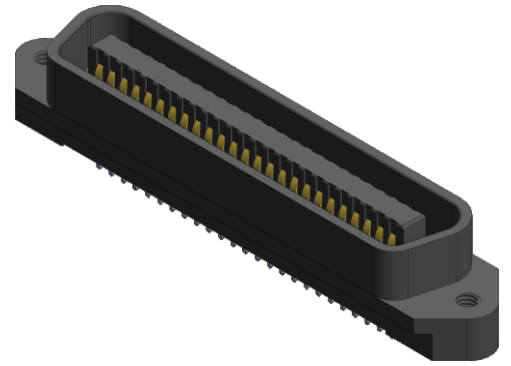
- Flat Plate Installation to eliminate the need for secondary operation tooling which can damage the connector when installed into motherboard.
- Available with through-hole 4-40 insert or 4-40 stand-off mounting hardware.
- Available in selective gold plate at contact point
- Many other custom options available, consult factory



Recognized under the recognized component Program of Underwriters Laboratories, Inc.

For drawings, technical data or samples, contact ECS.

Vertical Plug



Dimensions are in inches [mm]

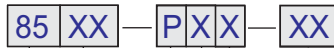
MOUNTING OPTIONS

- 1 = #4-40 FLUSH INSERT
- 2 = #4-40 STAND-OFF OPTION
- 3 = THRU HOLE
- 4 = #4-40 STAND-OFF

NO. OF CONTACTS	A	B	D	E
25/50	3.270 / 83.06	2.946 / 74.83	2.536 / 64.41	2.040 / 51.82
32/64	3.865 / 98.17	3.541 / 89.94	3.131 / 79.53	2.635 / 66.93

Dimensions are in inches [mm]

PART NUMBERING



SERIES CODE

.085 X .160 Centers

NO. CONTACT PAIRS

25, 32

CONNECTOR STYLE

P = Plug (male)

TAIL LENGTH

- 1 = .180 [4.57] Press-Fit
- 2 = .300 [7.62] Press-Fit
- 3 = .100 [2.54] Surface Mount
- 4 = .180 [4.57] Solder

MOUNTING OPTIONS

- 1 = #4-40 Flush Insert
- 2 = #4-40 Stand-Off Option
- 3 = Ø 0.125 Thru Hole
- 4 = Stand Off
- 8 = #4-40 tapped hole

PLATING

50µ" Nickel Underplate

Mating Area	Tail
05 = Au Flash	100µ" Tin
20 = 15µ" Gold	100µ" Tin
30 = 30µ" Gold	100µ" Tin

CONSULT FACTORY FOR CUSTOM CONNECTORS BUILT TO YOUR SPECIFICATION