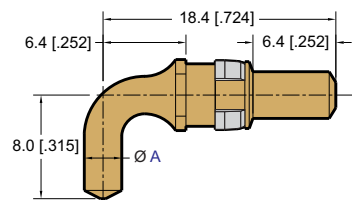


High Current Contacts (PCB Mount)

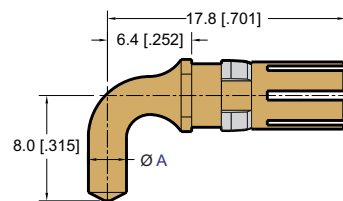


DIN 41612, D-Subminiature, Hard Metric

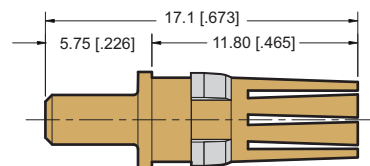
Plug: Right Angle	Max. Current	Dim. A
P/N 55-1P-203-1	20 Amp	Ø 2.9 [.114]
P/N 55-1P-403-1	40 Amp	Ø 3.8 [.150]



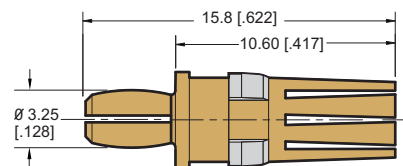
Socket: Right Angle	Max. Current	Dim. A
P/N 55-1S-203-1	20 Amp	Ø 2.9 [.114]
P/N 55-1S-403-1	40 Amp	Ø 3.8 [.150]



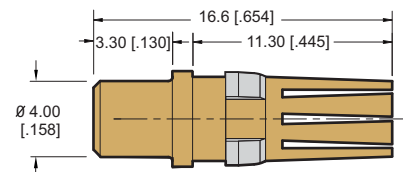
Socket: Straight PCB Termination	Max. Current	PCB Hole Size Requirement
P/N 55-1S-207-1	20 Amp	Ø 3.00 [.118]



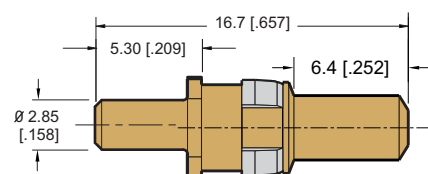
Socket: Straight PCB Press Fit	Max. Current	PCB Hole Size Requirement
P/N 55-1S-208-1	30 Amp	Ø 3.00 [.118]



Socket: Straight PCB Termination	Max. Current	PCB Hole Size Requirement
P/N 55-1S-217-1	40 Amp	Ø 4.80 [.189]



Plug: Straight PCB Termination	Max. Current	PCB Hole Size Requirement
P/N 55-1P-218-1	20 Amp	Ø 3.00 [.118]



Dimensions are in mm[inch].