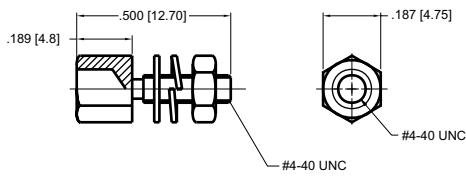




# 8000 Series D-Subminiature Accessories

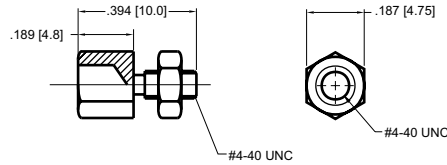
## 80-H001

Set Includes:  
2 #4-40 female jack screws, 2 flat washers,  
2 split washers, and 2 hex nuts.



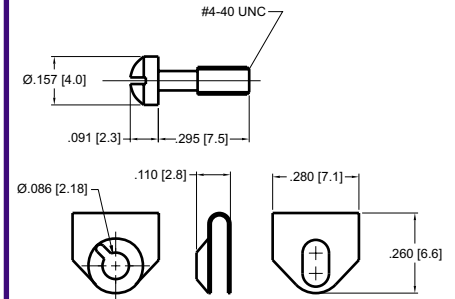
## 80-H002

Set Includes:  
2 #4-40 female jack screws, and 2 hex nuts.



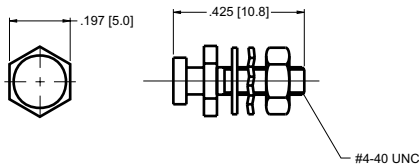
## 80-H003

Set Includes:  
2 #4-40 screw retainer clips and 2 retainer screws



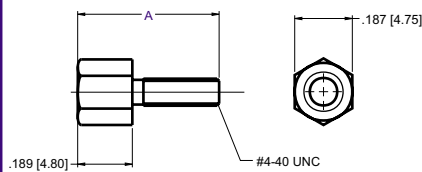
## 80-H004

Set Includes:  
2 slide lock posts, 2 washers, 2 lock washers, 2 hex nuts



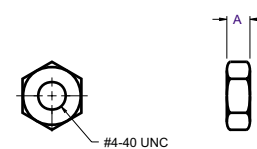
Set Includes: 2 female jack screws

Part No.	Dimension A
80-H005	.465 [11.8]
80-H006	.500 [12.7]
80-H007	.394 [10.0]
80-H008	.701 [17.8]



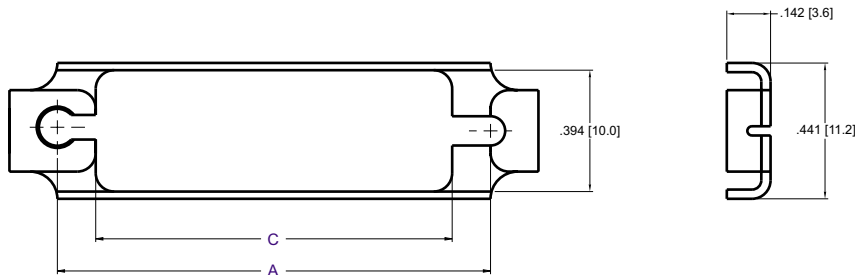
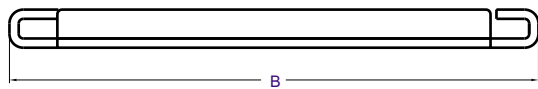
Set Includes: 2 hex nuts

Part No.	Dimension A
80-H009	.075 [1.90]
80-H010	.244 [6.20]



## Slide Lock Assembly kit

CIRCUITS	Part No. Sliding Latch w/ Screw	Part No. Sliding Latch w/o Screw	A	B	C
9	80-H012	80-H013	1.098 [27.9]	1.398 [35.5]	0.835 [21.2]
15	80-H014	80-H015	1.406 [36.7]	1.717 [43.6]	1.157 [29.4]
25	80-H016	80-H017	1.949 [49.5]	2.264 [57.5]	1.699 [43.1]



## 80-H011

Set Includes: 2 slide lock posts

