

# D-SUB MALE CRIMP MACHINE CONTACT

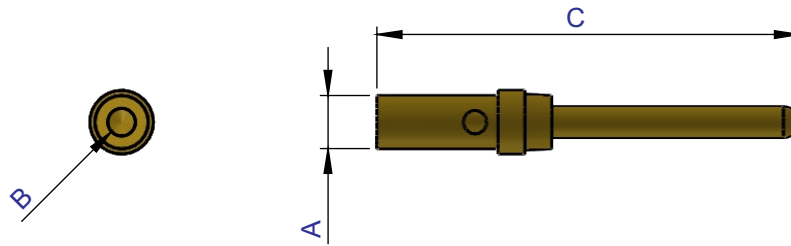


## MACHINE CONTACTS:

MACHINE CONTACTS ARE FURNISHED LOOSE PIECE FOR USE WITH MANUAL AND SEMI-AUTOMATIC MACHINES. THESE CONTACTS WILL ACCOMMODATE WIRE SIZES 22 TO 28 AWG.

## NOTES:

1. MATERIAL: Copper Alloy
2. PLATING: Gold over Nickel
3. WIRE RANGE: 22 to 28 AWG



PART NUMBER	WIRE SIZE	$A \pm 0.002 [0.05]$	$B \pm .002 [0.05]$	$C \pm .010 [0.25]$
<b>80-607P-05M</b>	#22 - #28	$\varnothing 0.082 [2.08]$	$\varnothing 0.040 [1.02]$	0.607 [15.42]

## PART NUMBERING

80 - 607 P - 05 M - B2

CONTACTS TYPE

M = Loose piece in bag (machine contact)

REFERENCE NUMBER (required if order with insulator)

B2 = Machine contact loose in bag (80-607P-05M)  
Blank = Contact Only

