

2.0 mm HM AB-22 Right Angle Female

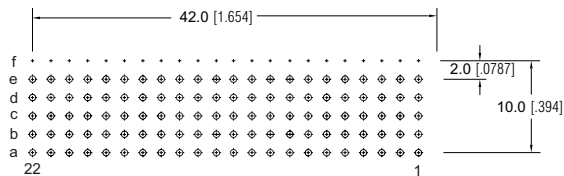
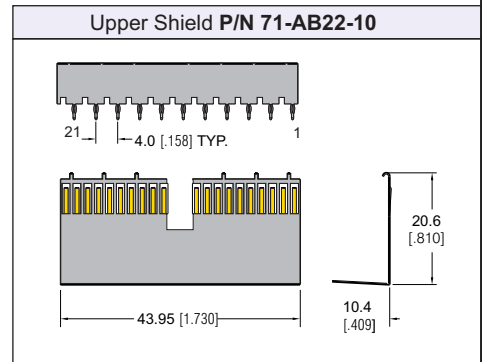
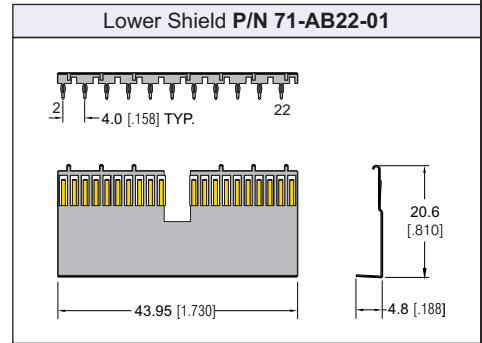
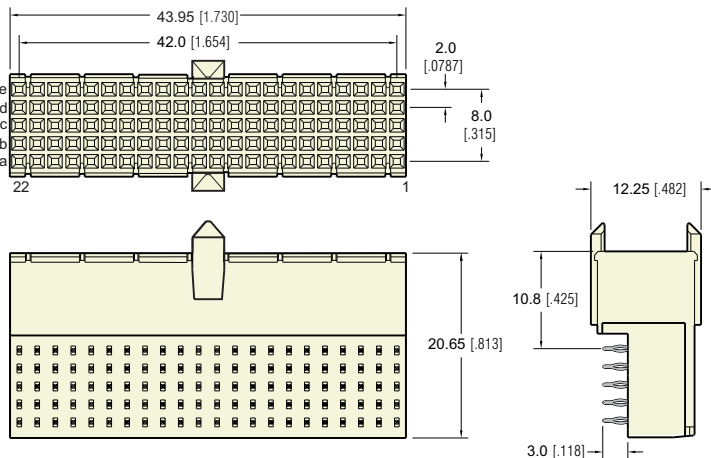


SPECIFICATION

- Insulator Material: PBT 30% Glass filled UL 94 V-O
- Contact Material: Copper Alloy
- Shield Material: Copper Alloy
- Contact Plating:
 - Contact Area: Gold
 - Compliant Area: Matte Tin
 - Performance: Class 1: 500 cycles
Class 2: 250 cycles
- Shield Plating:
 - Contact Area: Gold
 - Compliant Area: Matte Tin
- Temperature Range: -55 C to +125 C
- Contact Resistance: 20 M Ω Max.
- Insulation Resistance: 10 M Ω Max.
- Working Current: 1.5 ADC (Signal)
- Test Voltage: AC 750 V Min.
- Compliant Section:
 - Insertion Force: 100 N per contact Max.
 - Withdrawal Force: 20 N per contact Min.
- Mating Force: .75 N per pin Max.
- Withdrawal Force: .15 N per pin Max.
- PCB Hole Size Requirements:
 - Drilled Hole Diameter: 0.7 ± 0.02 mm
 - Finished Hole Diameter: 0.6 ± 0.05 mm
- Recommended PCB Thickness: 1.6mm Min.
- IEC 61076-4-101 Standard

The **E-Z mel™** Type AB-22 connector provides 110 contacts as well as integrated pre-alignment guides. These connectors are available either with or without integrated upper ground return shields. Lower ground return shields may be ordered separately.

The Type AB-22 connector is used in the rJ2 and rJ3 positions on Compact PCI® Daughtercard. This connector can be used by itself or in combination with any Type A, B, C, L, M and N **E-Z mel™** connector.



BOARD LAYOUT

PART NUMBERING

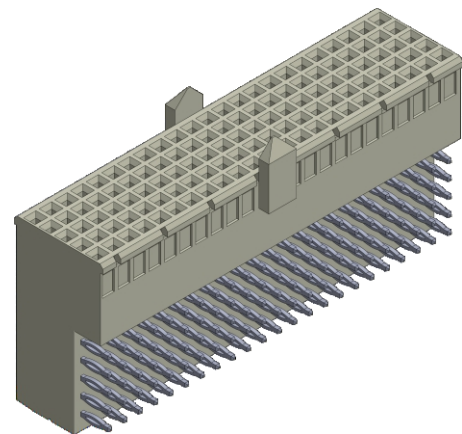
71-AB22-X0-X

SERIES CODE
2mm Hard Metric Female

TYPE
AB22

UPPER SHIELD
0 = Without Upper Shield
1 = With Upper Shield

CONTACT LOADING
1 = A, B, C, D, E
2 = A, B, C, D
3 = A, B, C
4 = A, D, E
5 = B, D



Dimensions are in mm [inch]