

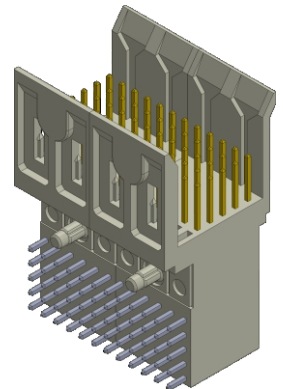
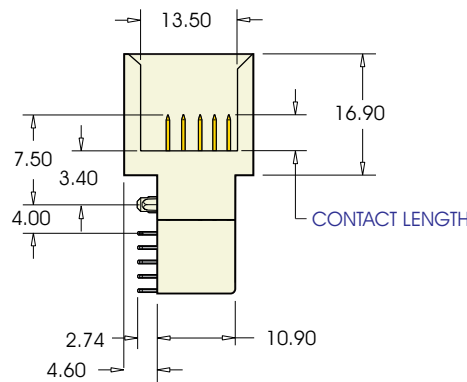
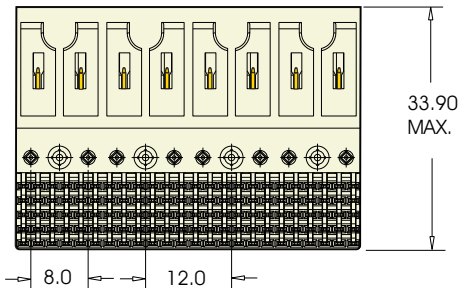
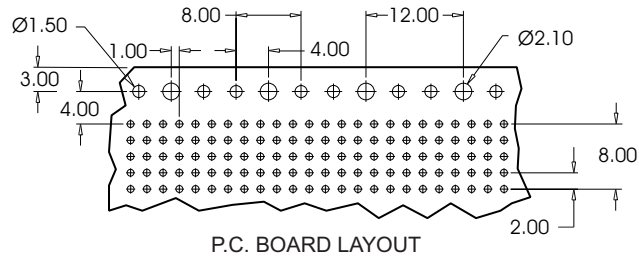
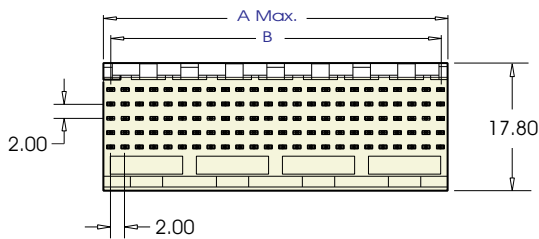
# 2.0mm FutureBus 5 Row Male Right Angle



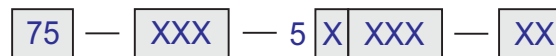
Position	Dim A	Dim B
30	11.95	10.00
60	23.95	22.00
90	35.95	34.00
120	47.95	46.00
150	59.95	58.00
180	71.95	70.00
210	83.95	82.00
240	95.95	94.00

## Specifications

1. Insulator Material: Liquid Crystal Polymer (LCP) 94V-0, UL Recognized.
2. Contact Material: Phosphor Bronze or Brass
3. Contact Plating: Gold and/or Tin over Nickel (see contact plating options)
4. Compliant Insertion Force: 22.1 lbs max. per contact
5. Compliant Withdrawal Force: 4.4 lbs min. per contact
6. Insulation Resistance: 1000 M ohms min. @ 500v
7. Contact Resistance: 30 m ohms max. @ DC 100mA
8. Dielectric Withstand Voltage: 1000 VAC for 1 min.
9. Current Rating: 1 Amp @ 20°C per contact
10. Operating Temperature: -55°C To +125°C
11. UL File Numbers: E 176234, IEEE 896.10 FutureBus+



## PART NUMBERING



SERIES CODE

NO. OF CONTACTS

SEE TABLE ABOVE

TERMINATION METHOD

- 1 = PRESS FIT
- 2 = DIP SOLDER

CONTACT PLATING

.000050" Nickel underplate

MATING      TAIL

01 = Au Flash      100µ"Sn

10 = 10µ"Au      100µ"Sn

30 = 30µ"Au      100µ"Sn

90 = 30µ"Au      30µ"Sn

CONTACT LENGTH

001=5.00

101=5.75

201=6.50

301=7.25

401=8.00