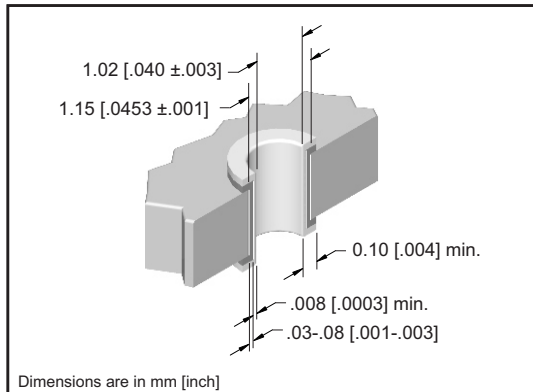


# Type TE, TE/2, Vertical Male DIN

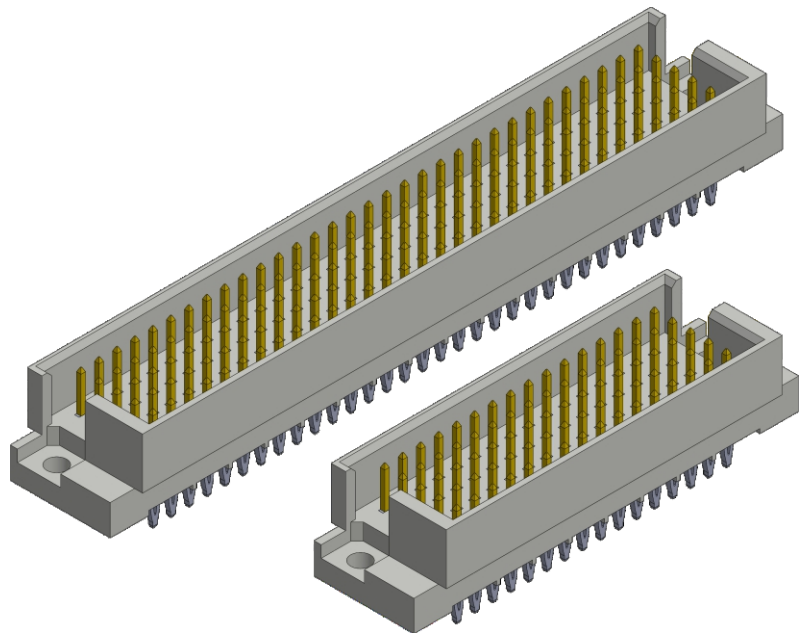


## DIN 41612 SPECIFICATION

Temperature Range	-65°C to +125°C	
Insulator Material	PBT 30% Glass Filled UL 94 V-0 Rated	
Contact Material:	Copper Alloy	
Contact Plating / Performance	Level 1	≥ 500 Mating Cycles
	Level 2	≥ 400 Mating Cycles
Per DIN 41612	Level 3	≥ 50 Mating Cycles
Contact Resistance	≤ 20m Ω	
Insulation Resistance	≥ 10 <sup>12</sup> m Ω at 100 VDC	
Dielectric Strength	≤ 1000 VDC	
Current Range at Ambient Temp. Of	+20C	3 Amp
	+70C	2 Amp
	+100C	1 Amp
Insertion Force (N)	≤ 100	
Withdrawal Forces Per Contact (N)	≥ .15	



DRILLED HOLE DIAMETER	PLATING THICKNESS	HOLE DIAMETER	PAD DIAMETER	INSERTION FORCE PER PIN	WITHDRAWAL FORCE PER PIN
1.15 [.0453]	Copper .03-.08 [.001-.003] Tin .008 [.0003]min.	After Plating .040±.003	1.65 [.065]	40 lbs. Max.	10 lbs. Min.



## APPROVALS



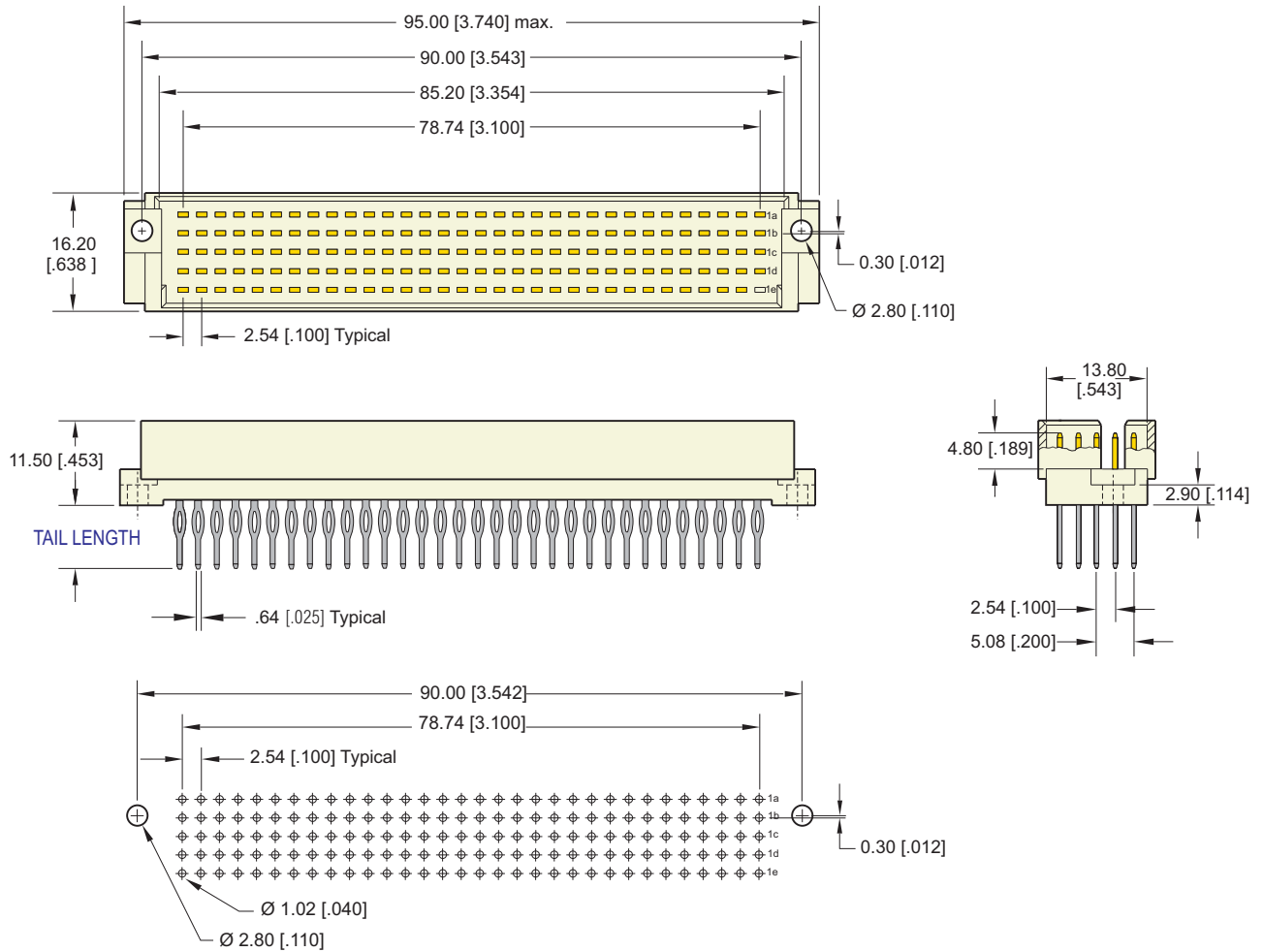
Recognized under the recognized component Program of Underwriters Laboratories, Inc.  
File Numbers: E176234

## IEC 60603-2 Standard

## Bellcore GR 1217 CORE

Connectors are available that meet the requirements of Bellcore GR 1217-CORE. Please consult factory for ordering information.

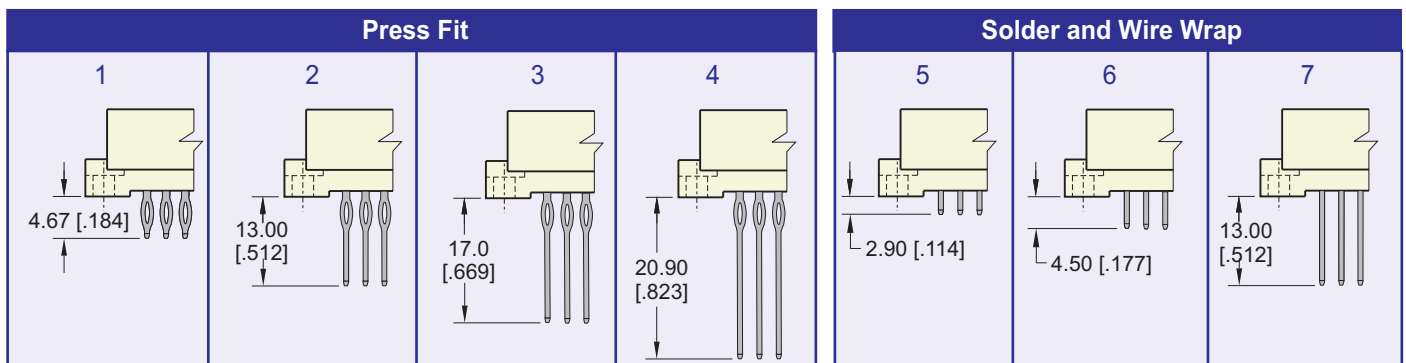
## Type TE, 160 Positions



Recommended P. C. Board Layout

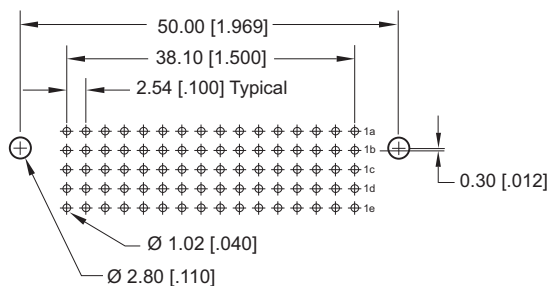
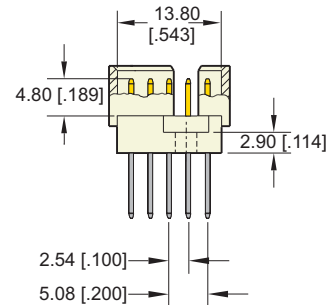
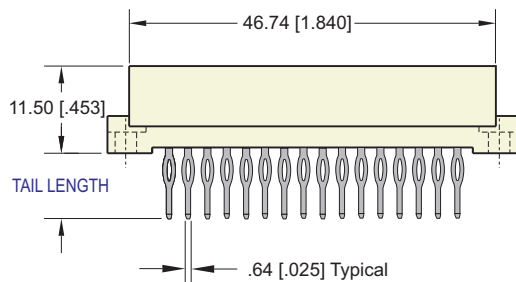
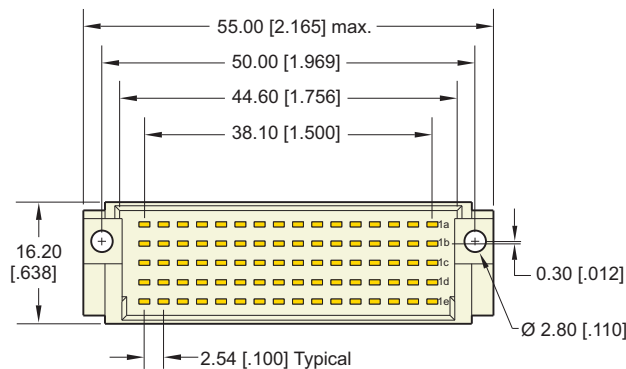
Dimensions are in mm [inches]

## TAIL LENGTH OPTIONS



Dimensions are in mm [inches]

## Type TE/2, 80 Positions



Recommended P. C. Board Layout

## PART NUMBERING



**SERIES CODE**  
Type TE, TE/2 DIN

**BODY STYLE**  
1 = TE/2 (80 positions)  
2 = TE (160 positions)

**NUMBER OF CONTACTS**  
1 = 16  
2 = 32  
3 = 48  
4 = 64  
5 = 96  
6 = 128  
7 = 160  
8 = 80

**CONTACT ARRANGEMENT**  
1 = Row A, B, C, D and E fully populated  
Consult Factory for other Loading Options

**TAIL PLATING**

1 = Tin  
2 = Gold flash (.200" from pin tip)  
3 = Gold plate 30µ" (.200" from pin tip)  
4 = Gold plate 15µ" (.200" from pin tip)

**MATING AREA PLATING**

1 = Class 1  
2 = Class 2  
3 = Class 3

**TAIL LENGTH**

1 = 4.67 [.184] Press-Fit  
2 = 13.00 [.512] Press-Fit  
3 = 17.00 [.669] Press-Fit  
4 = 20.90 [.823] Press-Fit  
5 = 2.90 [.114] Dip Solder  
6 = 4.50 [.177] Dip Solder  
7 = 13.00 [.512] Dip Solder Wire Wrap

Note: Press Fit Connectors required a press in tool.  
Consult Factory for Press In Tool information.