

## Specifications

Insulator Material: Glass filled polyester, Thermoplastic, 94-VO, UL Recognized.  
Contact Material: Phosphor Bronze Alloy CA510  
Contact Plating: Gold over 50 $\mu$ " Nickel, and tin (See part numbering for thicknesses).  
Contact Resistance: 20m ohms max. at 1 AMP DC.  
Insulation Resistance: 1000M ohms at 500 V DC.  
Dielectric Withstand Voltage: 1000 V AC/rms 60Hz for 1 min.  
Current Rating: 5 AMP.  
Voltage Rating: 250 V AC/rms at 60Hz.  
Shell Plating: Steel, 100 $\mu$ " Tin over 50 $\mu$ " min. Nickel.

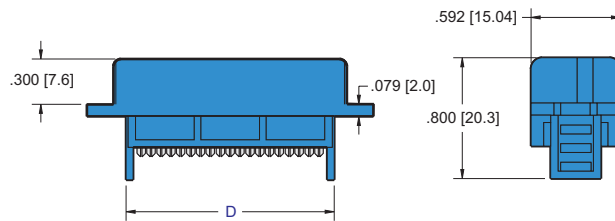
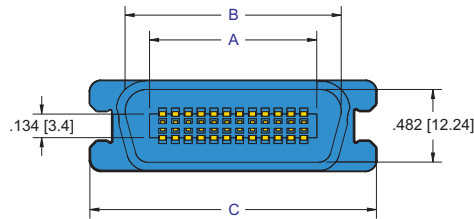
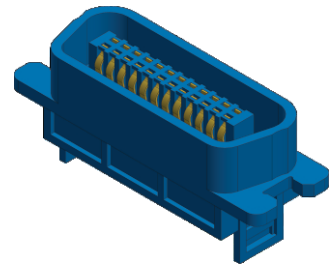
## Features

- Available in selective gold plate at contact point
- Many other custom options available, consult factory



**Recognized under the recognized component Program of Underwriters Laboratories, Inc.**  
**For drawings, technical data or samples, contact E.C.S.**

# PLUG CRIMP



ALL PLASTIC VERSION SHOWN

CONTACTS	A	B	C	D
24	1.104 [28.04]	1.439 [36.56]	1.897 [48.18]	1.378 [35.00]
36	1.608 [40.86]	1.941 [49.30]	1.925 [48.90]	2.008 [51.00]
50	2.200 [55.88]	2.531 [64.30]	2.996 [76.10]	3.260 [82.80]

DIMENSIONS ARE IN INCHES & [MM]

## PART NUMBERING

85 XX - X6 X - XX - SH X

**SERIES CODE**

.085 X .160 Centers

**NO. CONTACT PAIRS**

12, 18, 25

**CONNECTOR STYLE**

P = Plug

**IDC**

6 = IDC Type

**LATCH**

1 = With Bail Latch  
2 = Without Bail Latch

**PLATING**

50µ" Nickel Underplate  

Mating Area	Tail
05 = Au Flash	100µ" Tin
20 = 15µ" Gold	100µ" Tin
30 = 30µ" Gold	100µ" Tin

**STRAIN RELIEF**

5 = With Strain Relief  
Blank = No Strain Relief

**SHIELD**

SH = With Shield  
Blank = All Plastic