

# 8500 Series Ribbon Connectors

## Plug Centronic Right Angle



## Specifications

Insulator Material: Glass filled polyester, Thermoplastic, 94-VO, UL Recognized.  
Contact Material: Phosphor Bronze Alloy CA510  
Contact Plating: Gold over 50 $\mu$ " Nickel, and tin (See part numbering for thicknesses).  
Contact Resistance: 20m ohms max. at 1 AMP DC.  
Insulation Resistance: 1000M ohms at 500 V DC.  
Dielectric Withstand Voltage: 1000 V AC/rms 60Hz for 1 min.  
Current Rating: 3 AMP.  
Voltage Rating: 250 V AC/rms at 60Hz.  
Shell Plating: Steel, 100 $\mu$ " Tin over 50 $\mu$ " min. Nickel.  
Hole Size Requirements: Drilled Hole Dia.: .0378 $\pm$  .001  
Plating: .001 to .003 copper and .0003 min Tin.  
Finished Hole Diameter: .032 - .035  
Recommended Board Thickness: .093 to .125

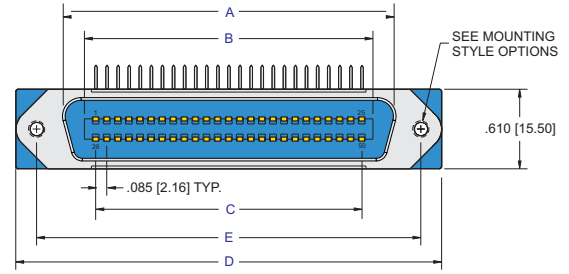
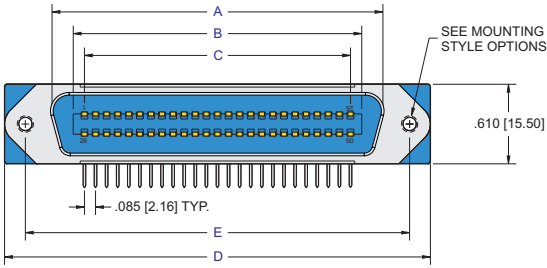
## Features

- Available in selective gold plate at contact point
- Many other custom options available, consult factory

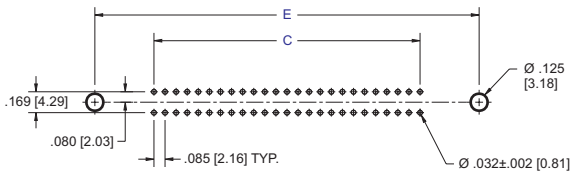
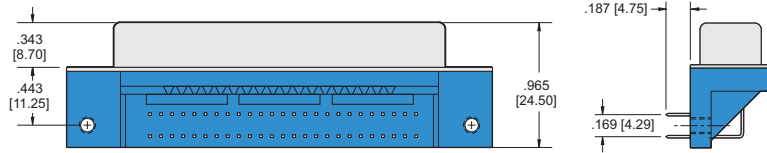


**Recognized under the recognized component Program of Underwriters Laboratories, Inc.**  
**For drawings, technical data or samples, contact E.C.S.**

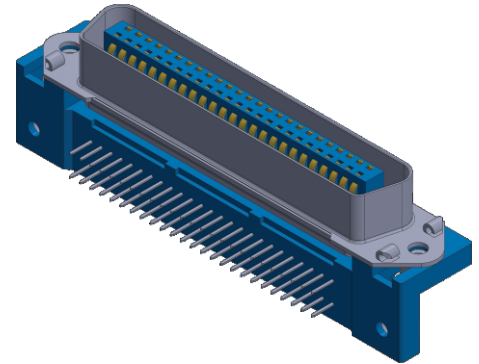
# Plug Right Angle



REVERSE ORIENTATION



PCB LAYOUT



## PART NUMBERING



### SERIES CODE

.085 X .160 Centers

### NO. CONTACT PAIRS

07, 12, 18, 25

### CONNECTOR STYLE

P = Plug (male)

### TAIL STYLE

5 = Right Angle

### MOUNTING STYLE

- CONNECTOR - BOARD
- 1 = #4-40 Screw - #4-40 UNC
  - 2 = Bail Latch - Board Lock
  - 3 = #4-40 Screw - Board Lock
  - 4 = #4-40 UNC - Board Lock
  - 5 = Bail Latch - #4-40 UNC
  - 6 = M3-5 Screw - Board Lock
  - 7 = M3- Screw - Board Lock

Consult Factory for other Mounting Styles

### ORIENTATION

- 1 = Reverse
- 9 = Short Tail .126-.138
- BLANK = Standard

### PLATING

50µ" Nickel Underplate

Mating Area	Tail
05 = Flash Au	100µ" Tin
20 = 15µ" Gold	100µ" Tin
30 = 30µ" Gold	100µ" Tin

CONTACTS	A	B	C	D	E
07/14	0.988 [25.10]	0.697 [17.70]	0.510 [12.96]	1.732 [44.00]	1.417 [36.00]
12/24	1.409 [35.80]	1.131 [28.74]	0.935 [23.76]	2.156 [54.76]	1.843 [46.80]
18/36	1.925 [48.90]	1.638 [41.60]	1.446 [36.72]	2.670 [67.82]	2.350 [59.70]
25/50	2.522 [64.06]	2.232 [56.70]	2.041 [51.84]	3.265 [82.92]	2.949 [74.90]

DIMENSIONS ARE IN INCHES & [MM]