

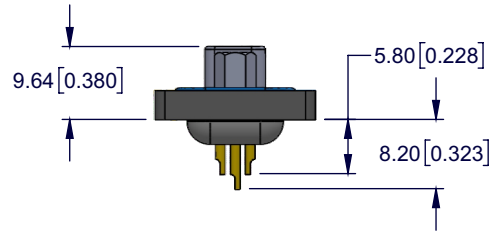
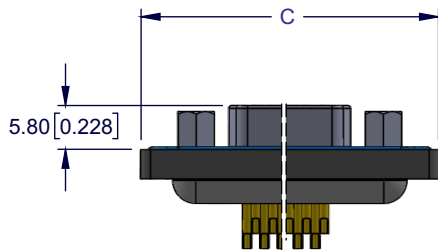
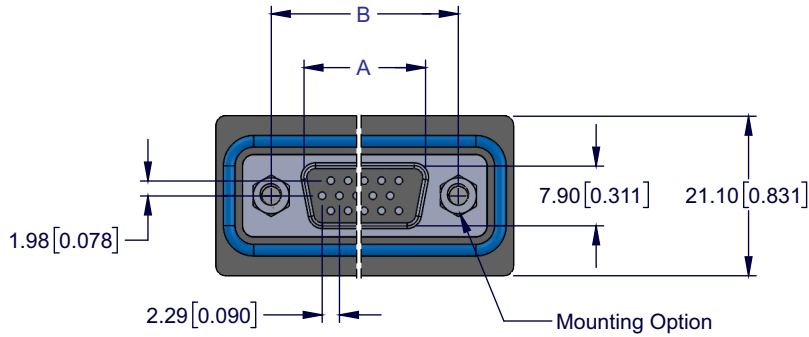
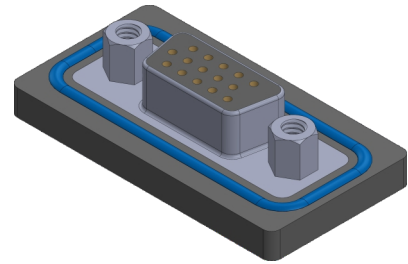
# D-SUB FEMALE WATERPROOF CONNECTOR

## HIGH DENSITY, VERTICAL SOLDER CUP TAIL



### SPECIFICATIONS:

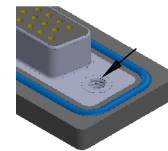
1. INSULATOR MATERIAL: Glass filled thermoplastic PBT, UL94V-0, Color Black
2. CONTACT MATERIAL: Copper Alloy
3. SHELL: Stainless Steel, passivated
4. O-RING: Silicone
5. EPOXY SEALANT: Epoxy
6. WATERPROOF RATE: IP67 as per IEC60529
7. CONTACT RESISTANCE: 10 mΩ max.
8. INSULATOR RESISTANCE: 5000MΩ min.
9. DIELECTRIC WITHSTANDING VOLTAGE: 1000V AC min. for 1 minute
10. CURRENT RATING: 3 Amp
11. OPERATING TEMPERATURE: -55°C to +105°C



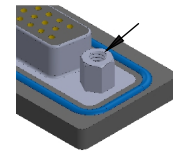
CONTACTS	A	B	C
15	16.30 [0.642]	25.00 [0.984]	39.50 [1.555]
26	24.60 [0.969]	33.32 [1.312]	47.80 [1.882]
44	38.40 [1.512]	47.04 [1.852]	61.50 [2.539]
62	54.80 [2.158]	63.50 [2.500]	77.80 [3.063]

Dimensions are in mm [inch]

### Mounting Options

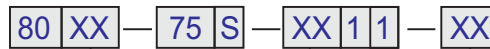


02= #4-40 UNC



03= #4-40 UNC  
Threaded Standoffs

### PART NUMBERING



NO. OF CONTACTS

15, 26, 44, 62

MOUNTING OPTIONS

02 = #4-40 UNC Hole

03 = #4-40 UNC Threaded Standoffs

Consult Factory for other Mounting Options

CONTACT PLATING

50μ" Nickel Underplate

Mating Area	Tail
03 = Gold Flash	Gold Flash
40 = 10μ" Gold	Gold Flash
50 = 15μ" Gold	Gold Flash
60 = 30μ" Gold	Gold Flash
80 = 10μ" Gold	10μ" Gold
85 = 15μ" Gold	15μ" Gold
90 = 30μ" Gold	30μ" Gold

Consult Factory for other thicknesses