

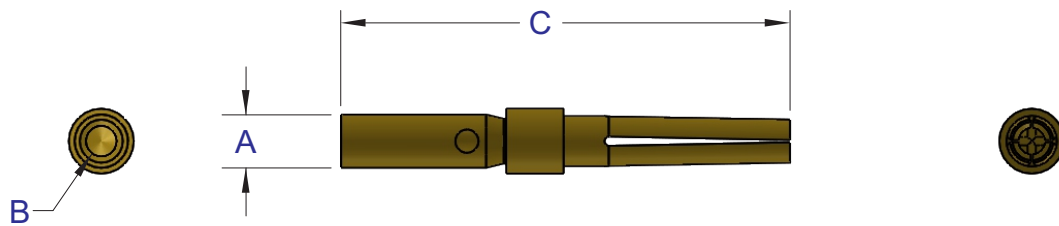
D-SUB FEMALE CRIMP MACHINE CONTACT

MACHINE CONTACTS:

MACHINE CONTACTS ARE FURNISHED LOOSE PIECE FOR USE WITH MANUAL AND SEMI-AUTOMATIC MACHINES. THESE CONTACTS WILL ACCOMMODATE WIRE SIZES 22 TO 28 AWG.

NOTES:

1. MATERIAL: Copper Alloy
2. PLATING: Gold over Nickel
3. WIRE RANGE: 22 to 28 AWG



PART NUMBER	WIRE SIZE	A±0.002[0.05]	B±.002[0.05]	C±.010[0.25]
80-585S-05M	#22 - #28	∅ 0.082 [2.08]	∅ 0.040 [1.02]	0.585 [14.86]

PART NUMBERING

80 — **585 S** — **05 M** — **B3**

CONTACTS TYPE
M= Loose piece in bag (machine contact)

REFERENCE NUMBER (required if order with insulator)
B3 = Machine contact loose in bag (80-585S-05M)
Blank = Contact Only

