

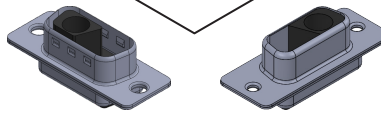
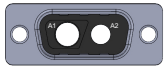
FULL POWER D_SUBMINIATURE



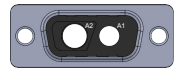
MALE

FEMALE

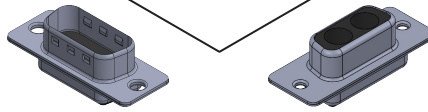
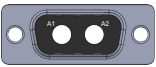
2WK2



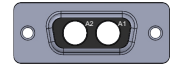
2WK2



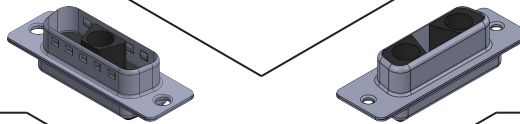
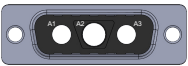
2K2



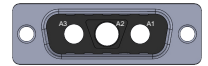
2K2



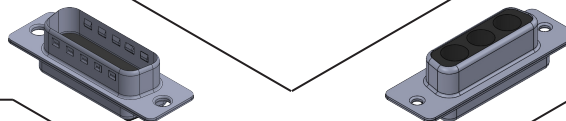
3KW3



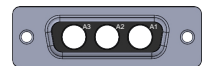
3KW3



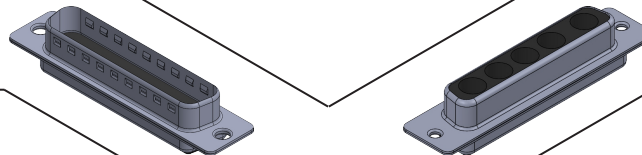
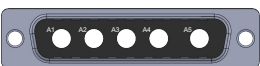
3W3



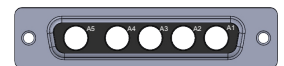
3W3



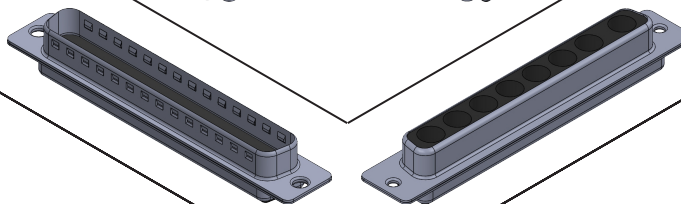
5W5



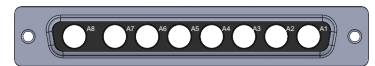
5W5



8W8



8W8



PART NUMBERING

INSULATOR ONLY



SERIES CODE

INSULATOR POSITION

2KW2, 2K2, 3W3, 5W5, 8W8

HOUSING TYPE

P = Plug
S = Receptacle

MOUNTING STYLE OPTIONS

A1 = through hole
A2 = 4-40 UNC nut
A3 = 4-40 UNC nut with stand-off
A4 = 4-40 UNC nut with board lock (vertical)
A5 = 4-40 UNC with bracket and board lock (R/A only)
Consult Factory for other Mounting Options

INSULATOR COLOR

1 = Black

SHELL PLATING

50µ" Nickel Underplate
1 = Tin Plating (standard)

CONTACT PLATING

50µ" Nickel Underplate

Mating Area	Tail
03 = Au Flash	Au Flash
05 = Au Flash	100µ" Tin
20 = 15µ" Gold	100µ" Tin
30 = 30µ" Gold	100µ" Tin

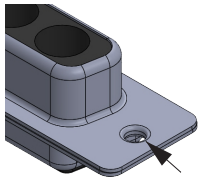
CONTACTS

1P201 = plug, vertical cable crimp, 20 amp
1S203 = socket, right angle PCB solder, 20 amp
1P204 = plug, vertical cable solder, 20 amp
1S208 = socket, vertical PCB preff-fit, 30 amp
1S403 = socket, right angle PCB solder, 20 amp
See Contact Page For More Number

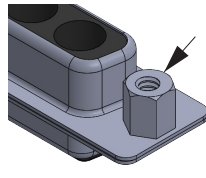
SPECIFICATION:

1. Plastic Housing: Glass filled PBT 30%, UL 94V-0 Rated
2. Metal Shell: Steel, Sn over Ni plating
3. Contact: Cu Alloy, Au over Ni at mating area (see part numbering system)
4. Insulation Resistance: 5000MΩ min.
5. Dielectric withstanding Voltage: 1000V AC (for 1 minute)
6. Operating Temperature: -55°C to +125°C
7. High Power Contact Current Rating: 10A/ 20A/ 30A/ 40A
8. High Power Contact Resistance: 1mΩ max.

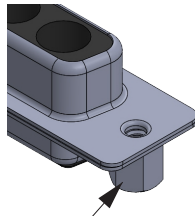
MOUNTING STYLE OPTIONS Consult Factory for other Mounting Option



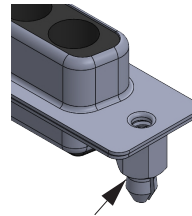
A1= THROUGH HOLE



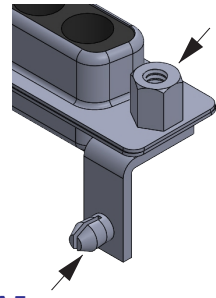
A2= #4-40 UNC,
THREADED INSERTS
B2= M3 THREADED INSERTS



A3= #4-40 UNC,
STAND-OFF
B3= M3 STAND-OFF



A4= #4-40 UNC,
BOARD LOCK
B4= M3, BOARD LOCK



A5= #4-40 UNC,
RIGHT ANGLE /W
BOARD LOCK
B5= M3 NUT, RIGHT ANGLE
/W BOARD LOCK

CONTACTS Consult Factory for other Contact Number

