

3 Row HDI Female Right Angle 2 Bay



Specifications

Insulator Material: Thermoplastic, color natural (brown)
 94 V-O, UL Rated.
 Contact Material: Copper Alloy
 Contact Plating: Gold and/or Tin over .000050" Nickel,
 (See Contact Plating Options).
 Current Range at Ambient Temp. Of:
 +20C = 3 amp
 +70C = 2 amp
 +100C = 1 amp
 Contact Resistance: $\leq 20\text{m } \Omega$
 Insulation Resistance: $\geq 10^{12} \text{ m } \Omega$ at 100 VDC
 Dielectric Strength: $\leq 1000 \text{ VDC}$
 Compliant Section Insertion Force: 40 lbs max per contact
 Compliant Section Withdrawal Force: 10 lbs min. per contact
 Recommended Board Thickness: .093"+
 Operating Temperature: -65°C to +125C

Recommended Hole Size			
<p>Dimensions are in inch [mm]</p>			
Drilled Hole Diameter	Plating Thickness	Hole Diameter	Pad Diameter
.0453±.001 [1.15]	Copper .001-.003 [.03-.08]	After Plating .040±.003 [1.02]	.065 [1.65]
	Tin .0003 [.008]min.		

CONTACTS	A	B	C	D	E
60 to 488	((# of Position/6-1) X 2.54 [0.100])	(A X 2) + 13.31 [0.524]	(A X 2) + 24.13 [0.950]	(A X 2) + 31.75 [1.250]	(A X 2) + 13.97 [0.475]

APPROVALS



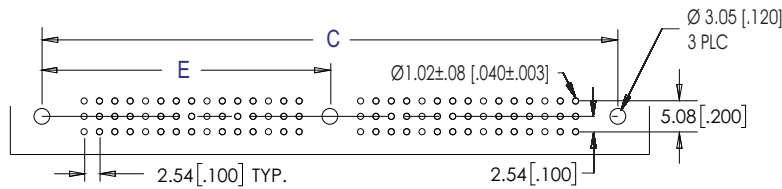
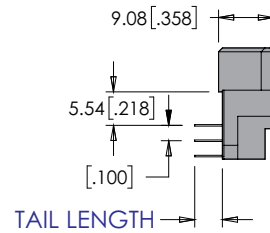
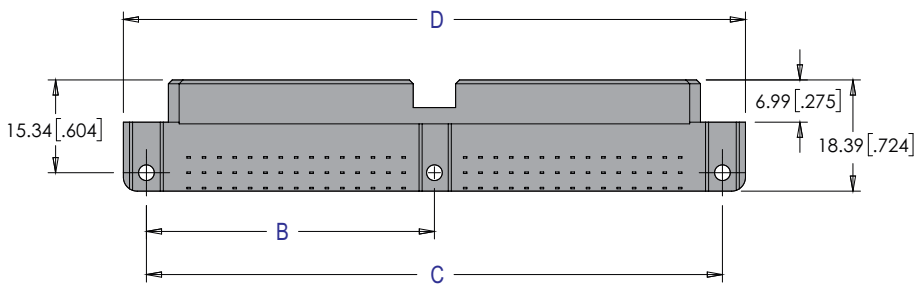
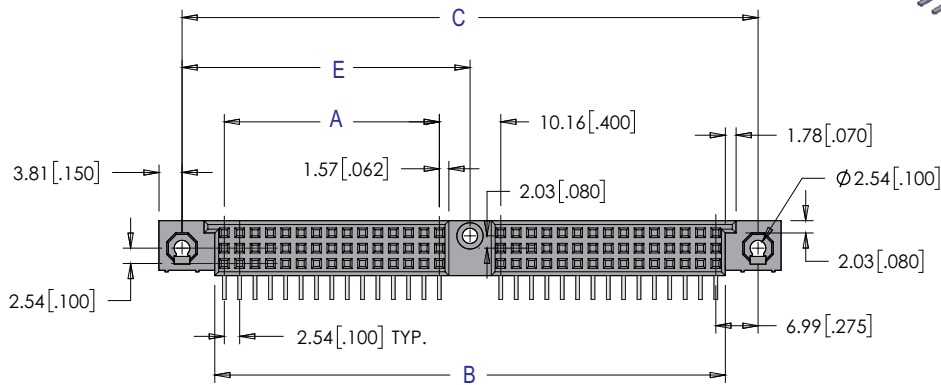
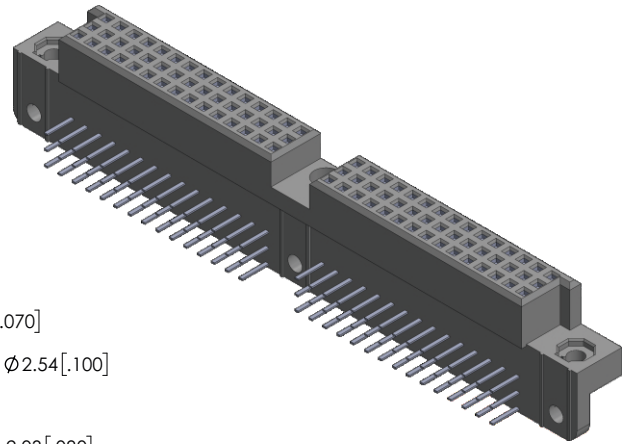
Recognized under the recognized component
 Program of Underwriters Laboratories, Inc.
 File Numbers: E176234

ISO 9001:2000 registered

Bellcore GRE 1217 CORE

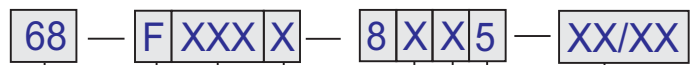
Connectors are available that meet the requirements of Bellcore GRE-1217-CORE. Please consult factory for ordering information.

3 ROW HDI Female Right Angle Connector 2 Bay



RECOMMENDED P.C. BOARD LAYOUT

PART NUMBERING



SERIES CODE
Female HDI Right Angle

NUMBER OF ROW
F = 3 Row with 2 Bay

TOTAL CONTACT
42 to 366

CONTACT ARRANGEMENT
A = Row A , B and C fully populated

BAY CONTACT
BAY 1 / BAY 2
42 to 366 position

TAIL PLATING
5 = Matte Tin

MATING AREA PLATING
1 = 30µ" Au over 50µ" Ni
2 = 15µ" Au over 50µ" Ni
3 = Flash Au over 50µ" Ni

TAIL LENGTH
1 = 3.05 [.120]
2 = 4.57 [.180]