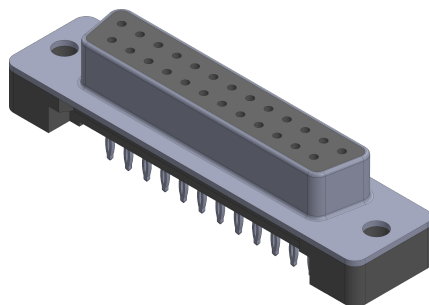
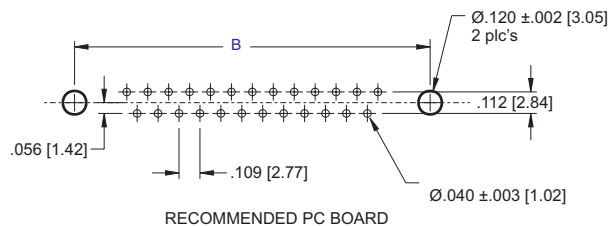
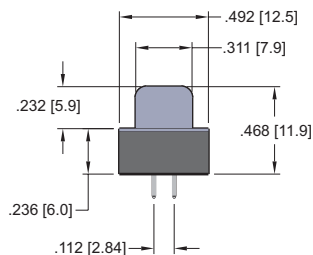
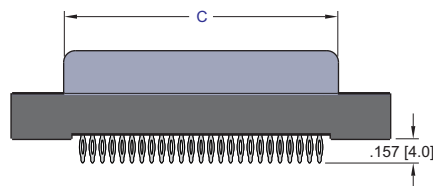
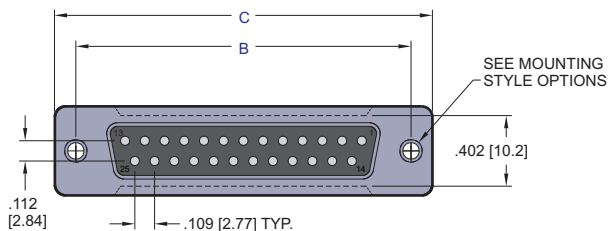


NO. OF CONTACTS	A	B	C
09	0.666 [16.92]	0.984 [25.00]	0.642 [16.33]
15	1.004 [25.50]	1.312 [33.32]	0.969 [24.66]
25	1.534 [38.96]	1.852 [47.04]	1.508 [38.38]
37	2.182 [55.42]	2.500 [63.50]	2.157 [54.84]



PART NUMBERING

SERIES CODE

NO. OF CONTACTS

09, 15, 25, 37

CONNECTOR TYPE

S = Receptable

MOUNTING STYLE OPTIONS

00 = .120 dia. Thru Holes
 02 = #4-40 Threaded Insert
 03 = #4-40 Threaded Insert with # 4-40 UNC Screw Lock
 15 = #4-40 Threaded Insert with Board Lock
 16 = #4-40 Screw Lock with Board Lock
 Consult Factory for other Mounting Options

CONTACT PLATING
 50μ" Nickel Underplate

Mating Area Tail
 05 = Au Flash 100μ" Tin
 20 = 15μ" Gold 100μ" Tin
 30 = 30μ" Gold 100μ" Tin

SHELL PLATING

.000050 nickel underplate
 1 = Tin Plating (standard)
 2 = Yellow Chromate

INSULATOR COLOR

1 = Black (Standard)
 2 = White
 3 = Blue

NOTES:

- Insulator Material: glass filled thermoplastic nylon 6T UL94V-0 rated.
- Contact Material: Phosphor Bronze
- Shell Material: Steel, 100μ" min. Ni.
- Contact Plating: see part numbering
 Clinch nut: Brass, 100μ" min. Ni plated
 Screw lock: Brass, 100μ" min. Ni plated
- Contact Resistance: 20 mOhm max. @ 1 amp DC
- Insulator Resistance: 1000 MOhm @ 500 VDC
- Dielectric Withstanding Voltage: 1000 VAC/rms 60Hz for 1 minute.
- Current Rating: 5 Amp
- Voltage Rating: 250 VAC/rms 60Hz
- Insertion Force: Insertion into PCB: 100N max. per contact
- Withdrawal Force: 30N min. per contact
- Operating Temperature: -55°C to +125°C
- Hole Size Requirements:
 Drilled Hole Diameter: 0.0453±0.001 [1.15]
 Plating: 0.001- 0.003 [0.030-0.080] copper and
 0.0001 to -0.008 [0.003-.020] solder
 14. Finished Hole Diameter: 0.040±0.003 [1.02]

ECS
 www.ecsconn.com

Email:
 custsvc@ecsconn.com
 Orange County, California

THIS DRAWING IS SUBJECT TO CHANGE WITHOUT NOTICE.

DIMENSIONS:	UNLESS OTHERWISE SPECIFIED:
INCHES [MM]	TOLERANCE: .00" ±.008 .000" ±.005 .0000" ±.001

THIS DRAWING AND SPECIFICATIONS HEREIN, ARE THE PROPERTY OF ECS, AND SHALL NOT BE REPRODUCED OR COPIED OR USED IN WHOLE OR IN PART AS THE BASIS FOR THE MANUFACTURE OR SALE OF ITEMS WITHOUT WRITTEN CONSENT OF ECS, INC.

DRAWN BY: CT	DATE 07.30.04	DESCRIPTION 8000 SERIES D-SUBMINIATURE VERTICAL PRESS FIT
CHECKED BY:		
APPROVED BY:		
SIZE A	DRAWING NUMBER: 80XX-01SC	REV. A
SCALE NONE	PATH \\ECS\CUSTOMER PRINTS\8000SER\	SHEET 1 OF 1

8000 D-Subminiature, Mounting Options



Press-Fit and Plastic Body Connectors

<p>00 = .120 dia. Thru Holes</p>	<p>02 = #4-40 Threaded Insert</p>	<p>03 = #4-40 Threaded Insert with #4-40 Screw Lock</p>	<p>15 = #4-40 Threaded Insert with Board Lock</p>	<p>16 = #4-40 Screw Lock with Board Lock</p>
----------------------------------	-----------------------------------	---	---	--

Solder, Right Angle, and High Density Connectors

<p>01 = .120 dia. Riveted Front and Rear Shell</p>	<p>04 = Riveted #4-40 UNC Open Nuts on Rear Shell</p> <p>.158 [4.0]</p>	<p>05 = Riveted #4-40 UNC Closed Nuts on Front Shell</p> <p>.228 [5.8]</p>	<p>06 = Riveted #4-40 UNC Open Nuts on Front Shell</p> <p>.158 [4.0]</p>	<p>07 = Riveted #4-40 UNC Close Ground Stand-Off on Rear Shell (Stamped Contact)</p> <p>.276 [7.0]</p>
<p>07 = Riveted #4-40 UNC Close Ground Stand-Off on Rear Shell (Machined Contact)</p> <p>.276 [7.0]</p>	<p>08 = Riveted Ground Hooks with #4-40 UNC Open</p>	<p>09 = Riveted Ground Tabs with #4-40 UNC Open (Stamped Contact)</p>	<p>09 = Riveted Ground Tabs with #4-40 UNC Open (Machined Contact)</p>	<p>10 = Riveted Ground Hooks Pre-Loaded #4-40 UNC Hex Screws</p>
<p>11 = Assembly Ground Hooks By #4-40 UNC Hex Screws (Stamped Contact)</p>	<p>11 = Assembly Ground Hooks By #4-40 UNC Hex Screws (Machined Contact)</p>	<p>12 = Riveted #4-40 UNC Close Ground Stand-Off on Rear Shell (Stamped Contact) for High Profile Connectors</p> <p>.425 [10.8]</p>	<p>13 = Riveted #4-40 UNC Close Ground Stand-Off on Rear Shell (Stamped Contact)</p> <p>.354 [8.99]</p>	<p>CONSULT FACTORY FOR OTHER MOUNTING STYLES OPTION</p>