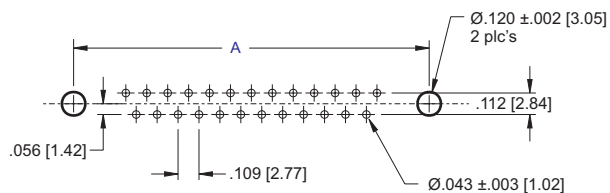
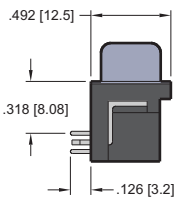
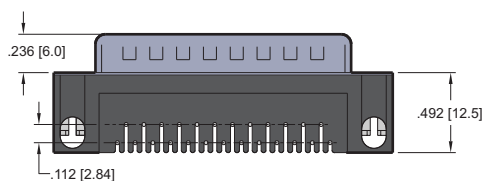
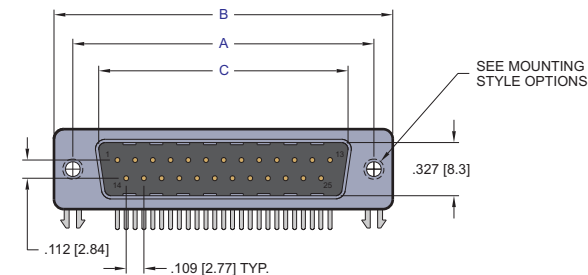
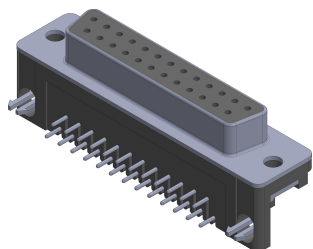


| CONTACTS | A | B | C |
|----------|---------------|---------------|---------------|
| 09 | 0.984 [25.00] | 1.213 [30.80] | 0.642 [16.30] |
| 15 | 1.312 [33.32] | 1.543 [39.20] | 0.969 [24.60] |
| 25 | 1.852 [47.04] | 2.091 [53.10] | 1.508 [38.30] |
| 37 | 2.500 [63.50] | 2.732 [69.40] | 2.157 [54.80] |



RECOMMENDED PC BOARD



PART NUMBERING

80 XX - 32 S - XX XX - XX

SERIES CODE

NO. OF CONTACTS

09, 15, 25, 37

CONNECTOR TYPE

S = Socket

MOUNTING STYLE OPTIONS

08 = Riveted Ground Hooks with #4-40 UNC Open
 09 = Riveted Ground Tabs with #4-40 UNC Open
 10 = Riveted Ground Hooks Pre-Loaded #4-40 UNC Hex Screws
 11 = Assembly Ground Hooks By #4-40 UNC Hex Screws
 Consult Factory for Other Mounting Options

CONTACT PLATING

50μ" Nickel Underplate

Mating Area Tail

05 = Au Flash 100μ" Tin

20 = 15μ" Gold 100μ" Tin

30 = 30μ" Gold 100μ" Tin

SHELL PLATING

50μ" Nickel Underplate

1 = Tin Plating (standard)

INSULATOR COLOR

1 = Black

NOTES:

- Insulator Material: glass filled thermoplastic nylon 6T UL94V-0 rated.
- Contact Material: Phosphor Bronze
- Shell Material: Steel, 100μ" min. Ni.
- Contact Plating: see part numbering
 Clinch nut: Brass, 100μ" min. Ni plated
 Screw lock: Brass, 100μ" min. Ni plated
- Contact Resistance: 20 mOhm max. @ 1 amp DC
- Insulator Resistance: 1000 MOhm @ 500 VDC
- Dielectric Withstanding Voltage: 1000 VAC/rms 60Hz for 1 minute.
- Current Rating: 5 Amp
- Voltage Rating: 250 VAC/rms 60Hz
- Operating Temperature: -55°C to +125°C
- Hole Size Requirements:
 Drilled Hole Diameter: 0.0473±0.001 [1.20±0.03]
 Plating: 0.001- 0.003 [0.030-0.080] copper and
 0.0001 to -0.008 [0.003-.020] solder
- Finished Hole Diameter: 0.043±0.003 [1.09]

ECS
 www.ecsconn.com

Email:
 custsvc@ecsconn.com
 Orange County, California

THIS DRAWING IS SUBJECT TO CHANGE WITHOUT NOTICE.

| | |
|-------------|--|
| DIMENSIONS: | UNLESS OTHERWISE SPECIFIED: |
| INCHES [MM] | TOLERANCE: .00" ±.008 .000" ±.005 .0000" ±.001 |

THIS DRAWING AND SPECIFICATIONS HEREIN, ARE THE PROPERTY OF ECS, AND SHALL NOT BE REPRODUCED OR COPIED OR USED IN WHOLE OR IN PART AS THE BASIS FOR THE MANUFACTURE OR SALE OF ITEMS WITHOUT WRITTEN CONSENT OF ECS, INC.

DRAWN BY: CT DATE: 07.30.04 DESCRIPTION:

CHECKED BY: APPROVED BY:

8000 SERIES D-SUBMINIATURE
 0.318 [8.08] RIGHT ANGLE, SOCKET

SIZE: A DRAWING NUMBER:

80XX-32SC

REV. A

SCALE: NONE

PATH:

\\ECS\CUSTOMER PRINTS\8000SER\

SHEET

1 OF 1

8000 D-Subminiature, Mounting Options



Press-Fit and Plastic Body Connectors

| | | | | |
|----------------------------------|-----------------------------------|---|---|--|
| <p>00 = .120 dia. Thru Holes</p> | <p>02 = #4-40 Threaded Insert</p> | <p>03 = #4-40 Threaded Insert with #4-40 Screw Lock</p> | <p>15 = #4-40 Threaded Insert with Board Lock</p> | <p>16 = #4-40 Screw Lock with Board Lock</p> |
|----------------------------------|-----------------------------------|---|---|--|

Solder, Right Angle, and High Density Connectors

| | | | | |
|---|--|---|---|--|
| <p>01 = .120 dia. Riveted Front and Rear Shell</p> | <p>04 = Riveted #4-40 UNC Open Nuts on Rear Shell</p> <p>.158 [4.0]</p> | <p>05 = Riveted #4-40 UNC Closed Nuts on Front Shell</p> <p>.228 [5.8]</p> | <p>06 = Riveted #4-40 UNC Open Nuts on Front Shell</p> <p>.158 [4.0]</p> | <p>07 = Riveted #4-40 UNC Close Ground Stand-Off on Rear Shell (Stamped Contact)</p> <p>.276 [7.0]</p> |
| <p>07 = Riveted #4-40 UNC Close Ground Stand-Off on Rear Shell (Machined Contact)</p> <p>.276 [7.0]</p> | <p>08 = Riveted Ground Hooks with #4-40 UNC Open</p> | <p>09 = Riveted Ground Tabs with #4-40 UNC Open (Stamped Contact)</p> | <p>09 = Riveted Ground Tabs with #4-40 UNC Open (Machined Contact)</p> | <p>10 = Riveted Ground Hooks Pre-Loaded #4-40 UNC Hex Screws</p> |
| <p>11 = Assembly Ground Hooks By #4-40 UNC Hex Screws (Stamped Contact)</p> | <p>11 = Assembly Ground Hooks By #4-40 UNC Hex Screws (Machined Contact)</p> | <p>12 = Riveted #4-40 UNC Close Ground Stand-Off on Rear Shell (Stamped Contact) for High Profile Connectors</p> <p>.425 [10.8]</p> | <p>13 = Riveted #4-40 UNC Close Ground Stand-Off on Rear Shell (Stamped Contact)</p> <p>.354 [8.99]</p> | <p>CONSULT FACTORY FOR OTHER MOUNTING STYLES OPTION</p> |