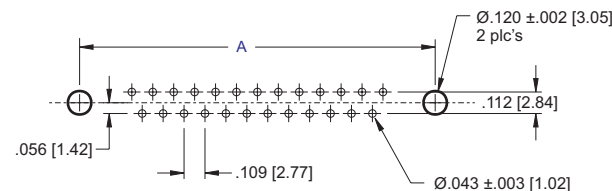
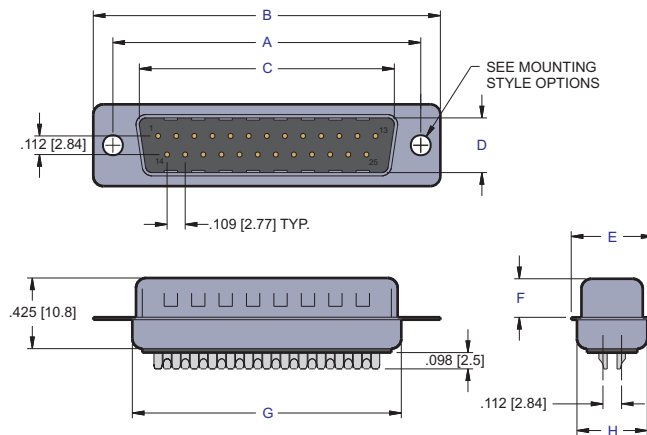
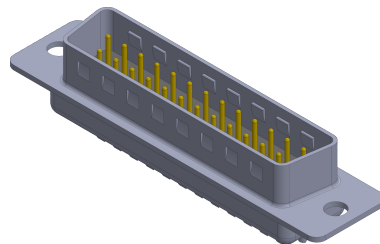


NO. OF CONTACTS	A	B	C	D	E	F	G	H
09	0.984 [25.00]	1.213 [30.80]	0.666 [16.92]	0.327 [08.30]	0.492 [12.50]	0.236 [06.00]	0.760 [19.30]	0.423 [10.75]
15	1.312 [33.32]	1.543 [39.20]	0.994 [25.25]	0.327 [08.30]	0.492 [12.50]	0.236 [06.00]	1.087 [27.60]	0.423 [10.75]
25	1.852 [47.04]	2.091 [53.10]	1.534 [38.96]	0.327 [08.30]	0.492 [12.50]	0.236 [06.00]	1.618 [41.10]	0.423 [10.75]
37	2.500 [63.50]	2.732 [69.40]	2.182 [55.42]	0.327 [08.30]	0.492 [12.50]	0.236 [06.00]	2.256 [57.30]	0.423 [10.75]
50	2.402 [61.00]	2.638 [67.00]	2.079 [52.81]	0.473 [11.10]	0.602 [15.30]	0.236 [06.00]	2.169 [55.10]	0.526 [13.35]



RECOMMENDED PC BOARD



PART NUMBERING

80 XX - 09 P - XX XX - XX

SERIES CODE

NO. OF CONTACTS

09, 15, 25, 37, 50

CONNECTOR TYPE

P = Plug

MOUNTING STYLE OPTIONS

01 = .120 Riveted Front and Rear Shell
 04 = Riveted #4-40 UNC Open Nut on Rear Shell
 05 = Riveted #4-40 UNC Closed Nut on Front Shell
 06 = Riveted #4-40 UNC Open Nut on Front Shell
 Consult Factory for other Mounting Options

CONTACT PLATING

50µ" Nickel Underplate

Mating Area Tail

03 = Gold Flash Gold Flash

85 = 15µ" Gold 15µ" Gold

90 = 30µ" Gold 30µ" Gold

SHELL PLATING

50µ" Nickel Underplate

1 = Tin Plating (standard)

2 = Yellow Chromate

INSULATOR COLOR

1 = Black (Standard)

2 = White

NOTES:

1. Insulator Material: glass filled thermoplastic nylon 6T UL94V-0 rated.
2. Contact Material: Phosphor Bronze
3. Shell Material: Steel, 100µ" min. Ni.
4. Contact Plating: see part numbering
 Clinch nut: Brass, 100µ" min. Ni plated
 Screw lock: Brass, 100µ" min. Ni plated
5. Contact Resistance: 20 mOhm max. @ 1 amp DC
6. Insulator Resistance: 1000 MOhm @ 500 VDC
7. Dielectric Withstanding Voltage: 1000 VAC/rms 60Hz for 1 minute.
8. Current Rating: 5 Amp
9. Voltage Rating: 250 VAC/rms 60Hz
10. Operating Temperature: -55°C to +125°C

ECS

www.ecsconn.com

Email:
 custsvc@ecsconn.com
 Orange County, California

THIS DRAWING IS SUBJECT TO CHANGE WITHOUT NOTICE.

DIMENSIONS:	UNLESS OTHERWISE SPECIFIED:
INCHES [MM]	TOLERANCE: .00" ±.008 .000" ±.005 .0000" ±.001

THIS DRAWING AND SPECIFICATIONS HEREIN, ARE THE PROPERTY OF ECS, AND SHALL NOT BE REPRODUCED OR COPIED OR USED IN WHOLE OR IN PART AS THE BASIS FOR THE MANUFACTURE OR SALE OF ITEMS WITHOUT WRITTEN CONSENT OF ECS, INC.

DRAWN BY: CT	DATE 07.30.04	DESCRIPTION
CHECKED BY:		8000 SERIES D-SUBMINIATURE SOLDER CUP, MACHINED CONTACTS, PLUG
APPROVED BY:		
SIZE A	DRAWING NUMBER: 80XX-09PC	REV. A
SCALE NONE	PATH \\ECS\CUSTOMER PRINTS\8000SER\	SHEET 1 OF 1

8000 D-Subminiature, Mounting Options



Press-Fit and Plastic Body Connectors

<p>00 = .120 dia. Thru Holes</p>	<p>02 = #4-40 Threaded Insert</p>	<p>03 = #4-40 Threaded Insert with #4-40 Screw Lock</p>	<p>15 = #4-40 Threaded Insert with Board Lock</p>	<p>16 = #4-40 Screw Lock with Board Lock</p>
----------------------------------	-----------------------------------	---	---	--

Solder, Right Angle, and High Density Connectors

<p>01 = .120 dia. Riveted Front and Rear Shell</p>	<p>04 = Riveted #4-40 UNC Open Nuts on Rear Shell</p> <p>.158 [4.0]</p>	<p>05 = Riveted #4-40 UNC Closed Nuts on Front Shell</p> <p>.228 [5.8]</p>	<p>06 = Riveted #4-40 UNC Open Nuts on Front Shell</p> <p>.158 [4.0]</p>	<p>07 = Riveted #4-40 UNC Close Ground Stand-Off on Rear Shell (Stamped Contact)</p> <p>.276 [7.0]</p>
<p>07 = Riveted #4-40 UNC Close Ground Stand-Off on Rear Shell (Machined Contact)</p> <p>.276 [7.0]</p>	<p>08 = Riveted Ground Hooks with #4-40 UNC Open</p>	<p>09 = Riveted Ground Tabs with #4-40 UNC Open (Stamped Contact)</p>	<p>09 = Riveted Ground Tabs with #4-40 UNC Open (Machined Contact)</p>	<p>10 = Riveted Ground Hooks Pre-Loaded #4-40 UNC Hex Screws</p>
<p>11 = Assembly Ground Hooks By #4-40 UNC Hex Screws (Stamped Contact)</p>	<p>11 = Assembly Ground Hooks By #4-40 UNC Hex Screws (Machined Contact)</p>	<p>12 = Riveted #4-40 UNC Close Ground Stand-Off on Rear Shell (Stamped Contact) for High Profile Connectors</p> <p>.425 [10.8]</p>	<p>13 = Riveted #4-40 UNC Close Ground Stand-Off on Rear Shell (Stamped Contact)</p> <p>.354 [8.99]</p>	<p>CONSULT FACTORY FOR OTHER MOUNTING STYLES OPTION</p>