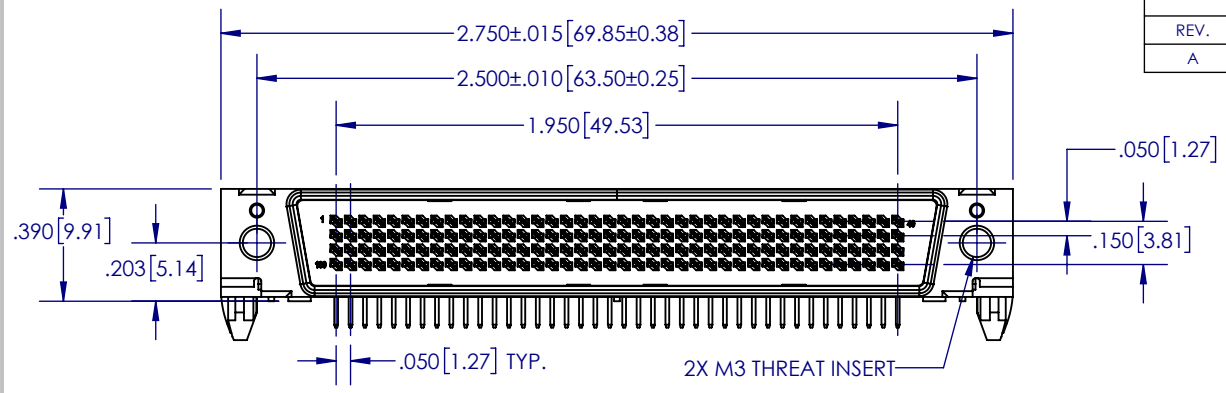


2

1

REVISIONS		
REV.	DESCRIPTION	DATE
A	ADDED NOTE 6 AND 7	2/28/2019

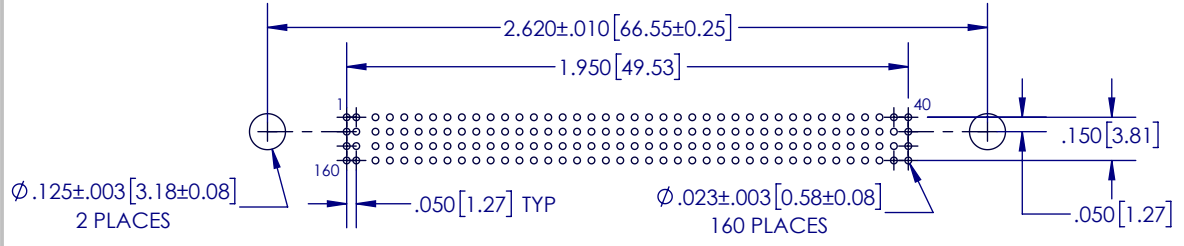
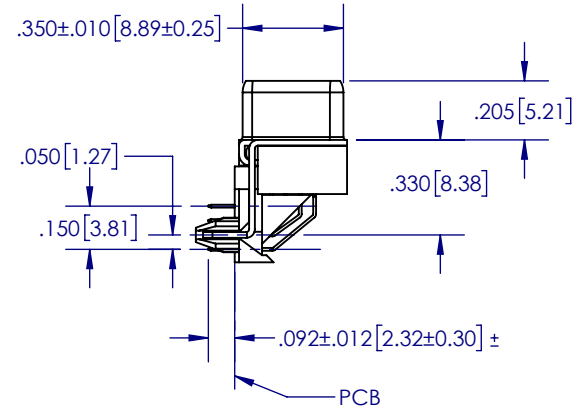
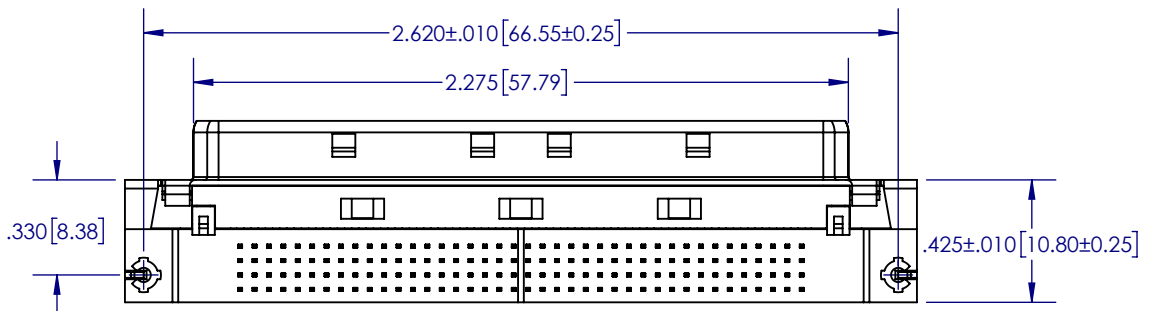
B



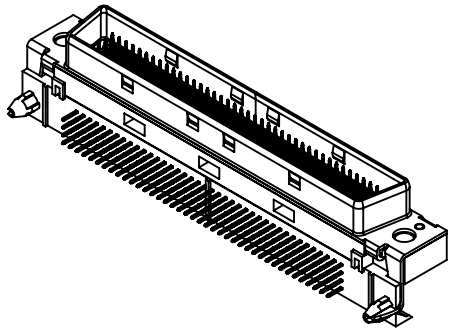
NOTES:

- 1) HOUSING, TAIL ALIGNER AND MOLDED STICK MATERIAL: GLASS FILLED LCP (LIQUID CRYSTAL POLYMER), UL 94V-0, COLOR BLACK.
- 2) CONTACT MATERIAL: PHOSPHOR BRONZE
- 3) OUTER SHELL MATERIAL: LOW CARBON STEEL
- 4) CONTACT PLATING: Contact Area: 30µ" Au min. over 50µ" Ni.
Tail Area: 100µ" min. Matte Sn over 50µ" Ni.
- 5) SHEEL PLATING: 150µ" Sn over 50µ" Ni.
- 6) Current Rating: 1A
- 7) Operating Temporator: -20°C to +80°C

B



A



UNLESS OTHERWISE SPECIFIED: DIMENSIONS ARE IN inch [mm] TOLERANCES: x.x ±0.02" x.xx ±0.010" x.xxx ±0.005"	DRAWN	NAME	DATE
	CHECKED	CT	2/11/19
PROPRIETARY AND CONFIDENTIAL THE INFORMATION CONTAINED IN THIS DRAWING IS THE SOLE PROPERTY OF ECS. ANY REPRODUCTION IN PART OR AS A WHOLE WITHOUT THE WRITTEN PERMISSION OF ECS IS PROHIBITED.	ENG APPR.	COMMENTS:	
	MFG APPR.		

ECS www.ecsconn.com		
TITLE: .050"X.050" PITCH, 160 CONTACT RIGHT ANGLE I/O MALE		
SIZE A	PART NO. A1840-P53-30	REV A
SCALE: NONE		SHEET 1 OF 1

A

2

1