

4

3

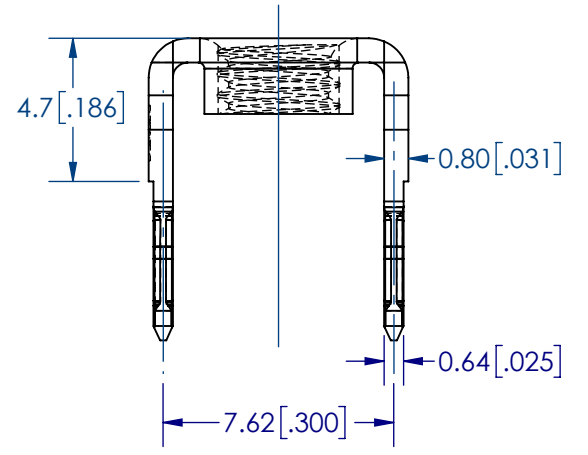
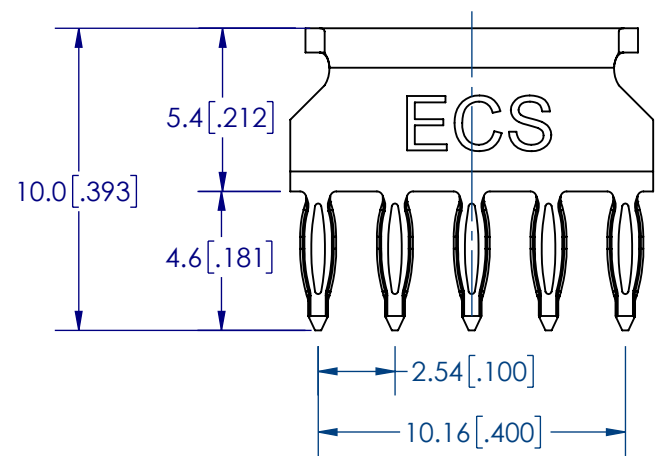
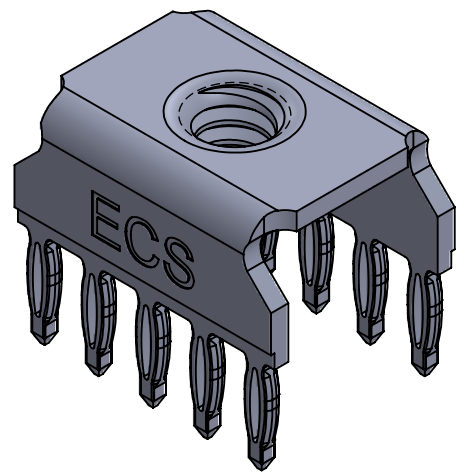
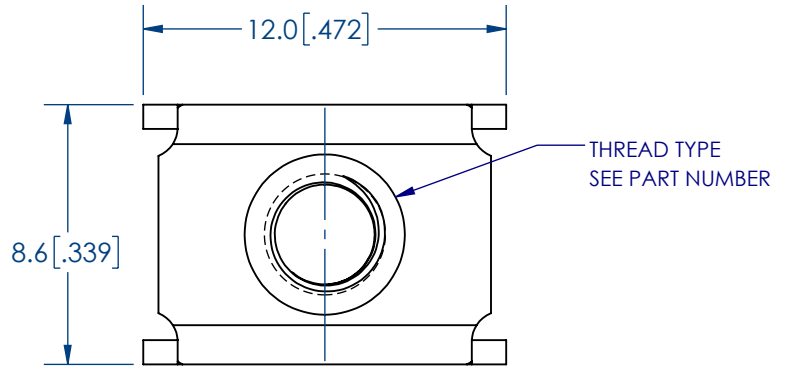
2

1

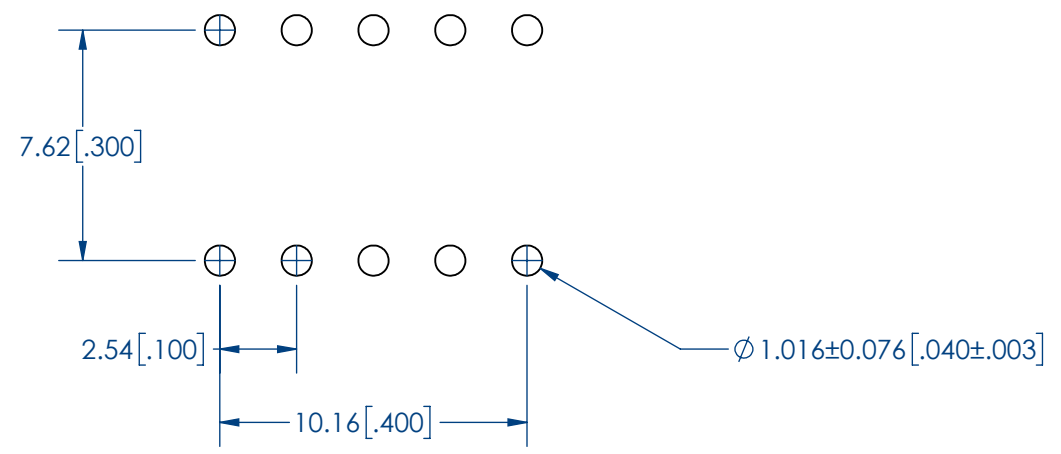
PART NUMBER	THREAD TYPE
13PTC10-M3	M3
13PTC10-M4	M4
13PTC10-632	6-32UNC
13PTC10-832	8-32UNC

REVISIONS			
REV.	DESCRIPTION	DATE	APPROVED
A	initial release	06/21/2019	DN
B	updated notes	10/17/2019	DN

FOR GOLD PLATING ADD -G AT THE END OF PART NUMBER



- NOTES:
1. MATERIAL: Copper Alloy
 2. PLATING: 100μ" -150μ". Matte Tin over 50μ" min. Nickel
 3. Current Rating: 40A max.
 4. No special tool required for insertion into PC Board
 5. Operating Temperature: up to 125°C
 6. Rated current circuit resistance =<10 milliohms
 7. PCB insertion force: 400 lbs max.
 8. PCB retention force: 80 lbs min.
 9. Screw Torque: 18 lbs max.
 10. Recommended Hole Size Diameter: $\varnothing 1.016 \pm 0.076$



UNLESS OTHERWISE SPECIFIED:		NAME	DATE	ECS	
DIMENSIONS ARE IN mm TOLERANCES:		DRAWN	CT		04.20.15
x.x	±0.20	CHECKED			
x.xx	±0.10	ENG APPR.			
x.xxx	±0.05	MFG APPR.			
PROPRIETARY AND CONFIDENTIAL		COMMENTS:		TITLE:	
THE INFORMATION CONTAINED IN THIS DRAWING IS THE SOLE PROPERTY OF ECS. ANY REPRODUCTION IN PART OR AS A WHOLE WITHOUT THE WRITTEN PERMISSION OF ECS IS PROHIBITED.				10 CONTACTS POWER TAP WITH COMPLIANT TAIL	
SIZE	DWG. NO.	REV			
B	13PTC10-XX	B			
SCALE: 4:1			SHEET 1 OF 1		

4

3

2

1

B

B

A

A