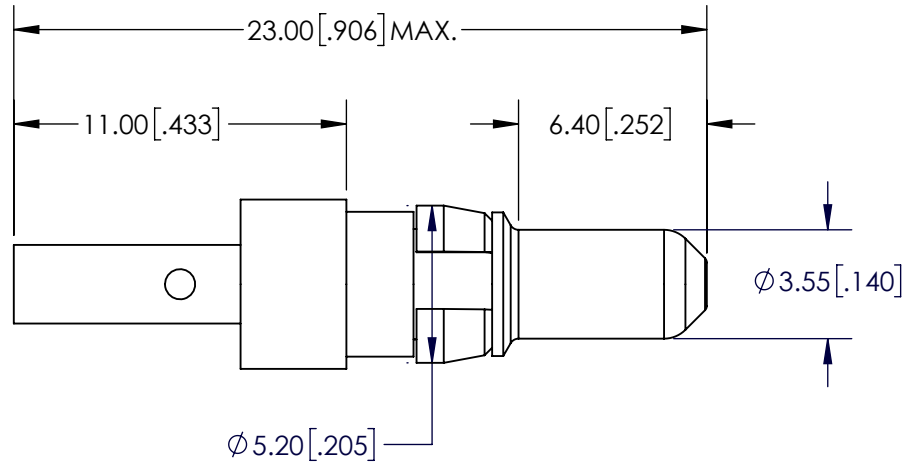
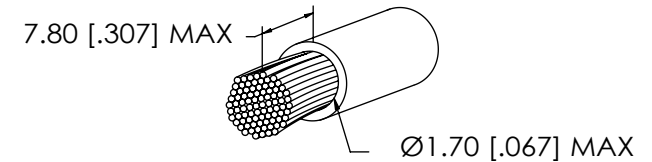


B

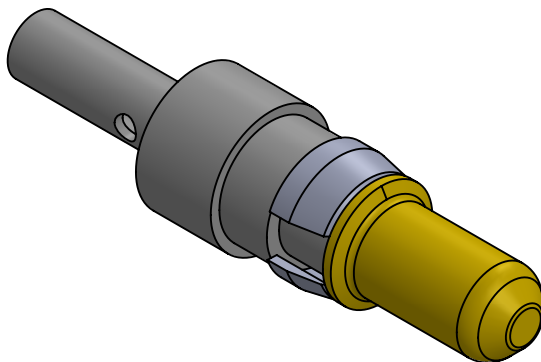


## NOTE:

1. Electrical Characteristics:  
Resistance:  $\leq 1\text{m ohm}$   
Max. Current: 10 amp
2. Mechanical Characteristics:  
Connecting Operations:  $\geq 500$  cycles
3. Engagement Force:  $\leq 10\text{N}$
4. Disengagement Force:  $\geq 1.6\text{N}$
5. Enviromenta:  
Temperature Range:  $-55^{\circ}\text{C}$  to  $+125^{\circ}\text{C}$
6. Quality Test: MIL-STD-202
7. Materials:
  1. Contact: Cu Alloy
  2. Retaining Clip: Cu Alloy
  3. Plating: Gold

CABLE DIMENSIONS

A



UNLESS OTHERWISE SPECIFIED:		NAME	DATE	<b>ECS</b> <a href="http://www.ecsconn.com">www.ecsconn.com</a>	
DIMENSIONS ARE IN mm TOLERANCES:	DRAWN	CT	4/17		
	CHECKED				
	ENG APPR.				
	MFG APPR.			TITLE:	
<b>PROPRIETARY AND CONFIDENTIAL</b>  THE INFORMATION CONTAINED IN THIS DRAWING IS THE SOLE PROPERTY OF ECS. ANY REPRODUCTION IN PART OR AS A WHOLE WITHOUT THE WRITTEN PERMISSION OF ECS IS PROHIBITED.		COMMENTS:		10 AMP POWER CONTACT PLUG STRAIGHT CRIMP WIRE SIZE AWG 16-20	
				SIZE <b>A</b>	PART NO. 55-1P-101-1
				REV A	
				SCALE: 6:1	
				SHEET 1 OF 1	

B

A

2

1