

NOTES:

MATERIAL:

Contact material: Cu Alloy
Contact Plating: Gold over Nickel
Performance Class: 1: ≥ 500 Cycles
Body Material: Cu Alloy
Clip Material: Cu Alloy

ELECTRICAL CHARACTERISTICS

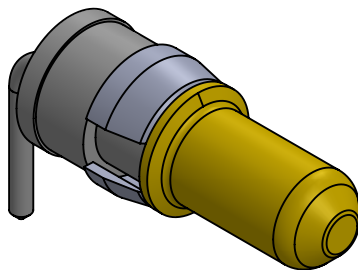
Contact Resistance: 2.7 m ohm max.
Insulation Resistance: 10^7 M ohm
Operating Voltage: 2.8 KV
Test Voltage: 4 KV
Maximum Current: 30 Amp

MECHANICAL CHARACTERISTICS

Insertion Force: 5 N max.
Withdrawal Force: 0.5 N max.

ENVIRONMENTAL

Temperature Range: -55° to $+125^{\circ}\text{C}$



UNLESS OTHERWISE SPECIFIED:			NAME	DATE	ECSwww.ecsconn.com		
DIMENSIONS ARE IN mm TOLERANCES:		DRAWN	CT	4/02			
		CHECKED			TITLE: HIGH POWER CONTACT RIGHT ANGLE PCB TERMINATION PLUG		
		ENG APPR.					
		MFG APPR.					
PROPRIETARY AND CONFIDENTIAL THE INFORMATION CONTAINED IN THIS DRAWING IS THE SOLE PROPERTY OF ECS. ANY REPRODUCTION IN PART OR AS A WHOLE WITHOUT THE WRITTEN PERMISSION OF ECS IS PROHIBITED.		COMMENTS:				SIZE	PART NUMBER:
					A	55-1P-102-1	A
					SCALE: NONE		SHEET 1 OF 1