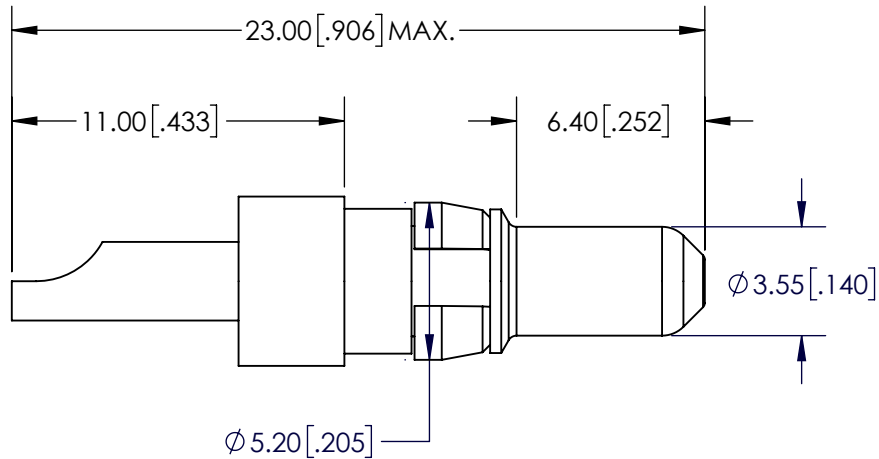
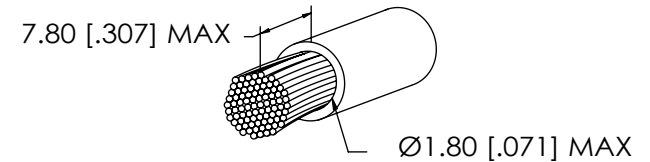


B

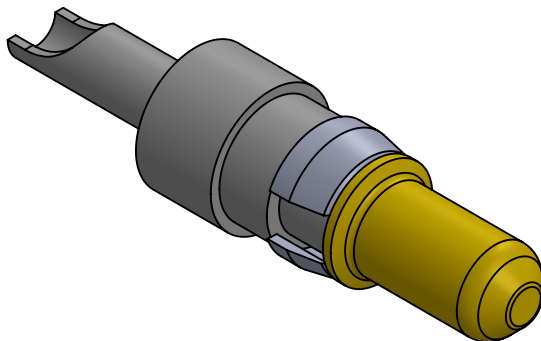


NOTE:

1. Electrical Characteristics:
Resistance: $\leq 1\text{m ohm}$
Max. Current: 10 amp
2. Mechanical Characteristics:
Connecting Operations: ≥ 500
3. Engagement Force: $\leq 10\text{N}$
4. Disengagement Force: $\geq 1.6\text{N}$
5. Enviromenta:
Temperature Range: -55°C to $+125^{\circ}\text{C}$
6. Quality Test: MIL-STD-202
7. Materials:
 1. Contact: Cu Alloy
 2. Retaining Clip: Cu Alloy
 3. Plating: Gold

CABLE DIMENSIONS

A



UNLESS OTHERWISE SPECIFIED:			NAME	DATE	<div>ECSwww.ecsconn.com</div>		
DIMENSIONS ARE IN mm TOLERANCES:		DRAWN	CT	4/17			
		CHECKED					
		ENG APPR.					
		MFG APPR.					
PROPRIETARY AND CONFIDENTIAL THE INFORMATION CONTAINED IN THIS DRAWING IS THE SOLE PROPERTY OF ECS. ANY REPRODUCTION IN PART OR AS A WHOLE WITHOUT THE WRITTEN PERMISSION OF ECS IS PROHIBITED.		COMMENTS:			TITLE:		
					10 AMP POWER CONTACT PLUG STRAIGHT SOLDER TERMINATION WIRE SIZE AWG 16-20		
					SIZE	PART NO.	REV
					A	55-1P-104-1	A
					SCALE: 6:1	SHEET 1 OF 1	

B

A

2

1