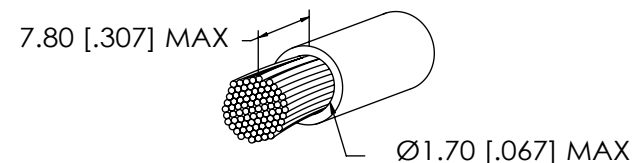
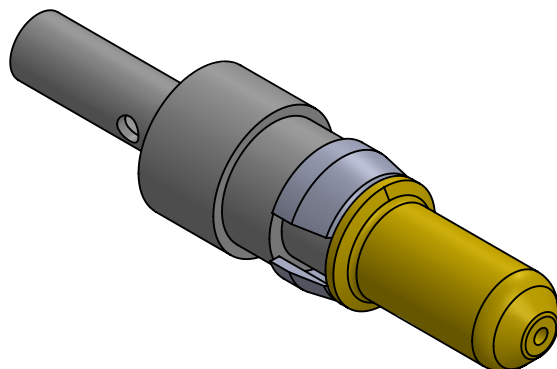


NOTE:

1. Electrical Characteristics:  
Resistance:  $\leq 1\text{m ohm}$   
Max. Current: 10 amp
2. Mechanical Characteristics:  
Connecting Operations:  $\geq 500$  cycles
3. Engagement Force:  $\leq 10\text{N}$
4. Disengagement Force:  $\geq 1.6\text{N}$
5. Enviromenta:  
Temperature Range:  $-55^{\circ}\text{C}$  to  $+125^{\circ}\text{C}$
6. Quality Test: MIL-STD-202
7. Materials:  
1. Contact: Cu Alloy  
2. Retaining Clip: Cu Alloy  
3. Plating: Gold



CABLE DIMENSIONS



UNLESS OTHERWISE SPECIFIED:		NAME	DATE	<b>ECS</b> <a href="http://www.ecsconn.com">www.ecsconn.com</a> <b>TITLE:</b> 10 AMP POWER CONTACT PLUG EXTENDED PIN STRAIGHT CRIMP WIRE SIZE AWG 16-20	
DIMENSIONS ARE IN mm TOLERANCES:	DRAWN	CT	4/17		
	CHECKED				
	ENG APPR.				
	MFG APPR.				
<b>PROPRIETARY AND CONFIDENTIAL</b> THE INFORMATION CONTAINED IN THIS DRAWING IS THE SOLE PROPERTY OF ECS. ANY REPRODUCTION IN PART OR AS A WHOLE WITHOUT THE WRITTEN PERMISSION OF ECS IS PROHIBITED.		COMMENTS:		SIZE <b>A</b> SCALE: 6:1	PART NO. 55-1P-111-1
				REV A	SHEET 1 OF 1