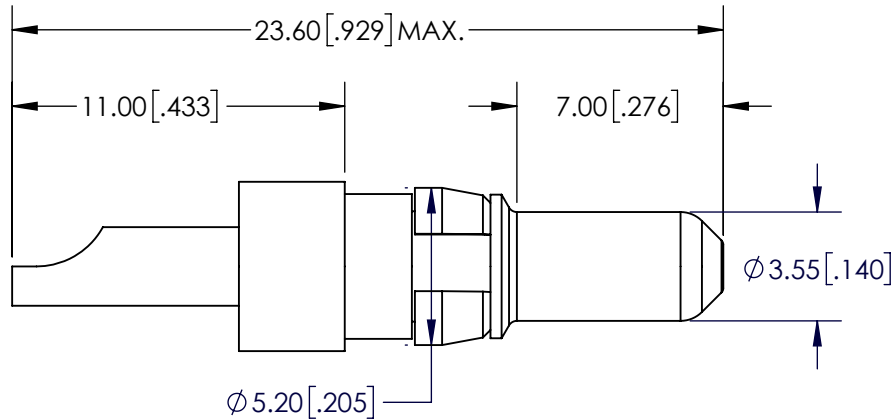
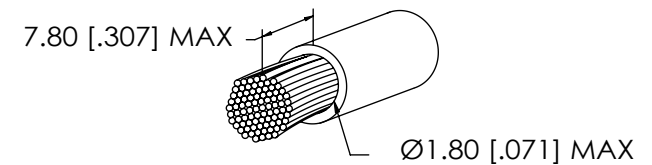
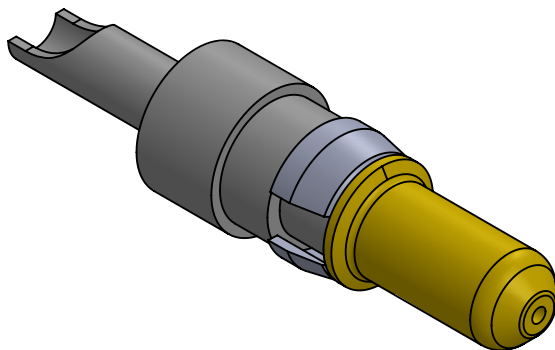


B



NOTE:

1. Electrical Characteristics:
Resistance: $\leq 1\text{m ohm}$
Max. Current: 10 amp
2. Mechanical Characteristics:
Connecting Operations: ≥ 500
3. Engagement Force: $\leq 10\text{N}$
4. Disengagement Force: $\geq 1.6\text{N}$
5. Enviromenta:
Temperature Range: -55°C to $+125^{\circ}\text{C}$
6. Quality Test: MIL-STD-202
7. Materials:
 1. Contact: Cu Alloy
 2. Retaining Clip: Cu Alloy
 3. Plating: Gold

CABLE DIMENSIONS

UNLESS OTHERWISE SPECIFIED:		NAME	DATE	ECS www.ecsconn.com	
DIMENSIONS ARE IN mm TOLERANCES:	DRAWN	CT	4/17		
	CHECKED				
	ENG APPR.				
	MFG APPR.			TITLE: 10 AMP POWER CONTACT PLUG STRAIGHT SOLDER TERMINATION EXTENDED PIN, WIRE SIZE AWG 16-20	
PROPRIETARY AND CONFIDENTIAL THE INFORMATION CONTAINED IN THIS DRAWING IS THE SOLE PROPERTY OF ECS. ANY REPRODUCTION IN PART OR AS A WHOLE WITHOUT THE WRITTEN PERMISSION OF ECS IS PROHIBITED.	COMMENTS:		SIZE	PART NO.	REV
			A	55-1P-114-1	A
			SCALE: 6:1		SHEET 1 OF 1

B

A

2

1

2

1