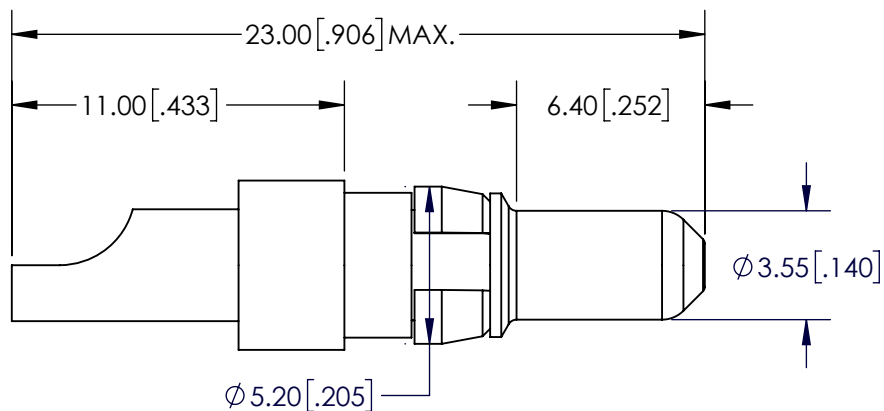
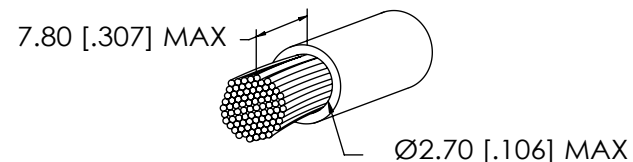


B



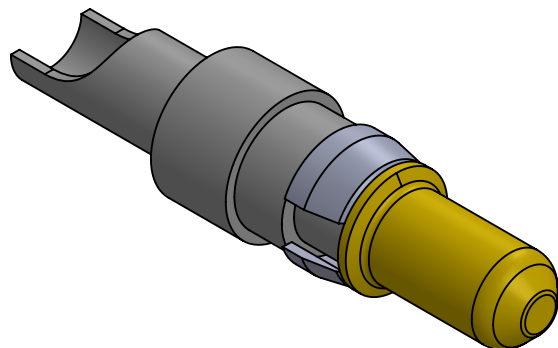
## NOTE:

1. Electrical Characteristics:
  - Resistance:  $\leq 1\text{m ohm}$
  - Max. Current: 20 amp
2. Mechanical Characteristics:
  - Connecting Operations:  $\geq 500$
3. Engagement Force:  $\leq 10\text{N}$
4. Disengagement Force:  $\geq 1.6\text{N}$
5. Enviromenta:
  - Temperature Range:  $-55^{\circ}\text{C}$  to  $+125^{\circ}\text{C}$
6. Quality Test: MIL-STD-202
7. Materials:
  1. Contact: Cu Alloy
  2. Retaining Clip: Cu Alloy
  3. Plating: Gold

CABLE DIMENSIONS

B

A



UNLESS OTHERWISE SPECIFIED:		NAME	DATE	<div>ECSwww.ecsconn.com</div>		
DIMENSIONS ARE IN mm TOLERANCES:	DRAWN	CT	4/17			
	CHECKED			TITLE:  20 AMP POWER CONTACT PLUG STRAIGHT SOLDER TERMINATION WIRE SIZE AWG 12-16		
	ENG APPR.					
	MFG APPR.					
PROPRIETARY AND CONFIDENTIAL		COMMENTS:		SIZE	PART NO.	REV
THE INFORMATION CONTAINED IN THIS DRAWING IS THE SOLE PROPERTY OF ECS. ANY REPRODUCTION IN PART OR AS A WHOLE WITHOUT THE WRITTEN PERMISSION OF ECS IS PROHIBITED.				A	55-1P-204-1	A
				SCALE: 6:1		SHEET 1 OF 1

A

2

1