

NOTES:

MATERIAL:

Contact material: Cu Alloy

Contact Plating: Gold over Nickel

Performance Class: 1: ≥ 500 Cycles

Body Material: Cu Alloy

Clip Material: Cu Alloy

ELECTRICAL CHARACTERISTICS

Contact Resistance: 2.7 m ohm max.

Insulation Resistance: 10^7 M ohm

Operating Voltage: 2.8 KV

Test Voltage: 4 KV

Maximum Current: 30 Amp

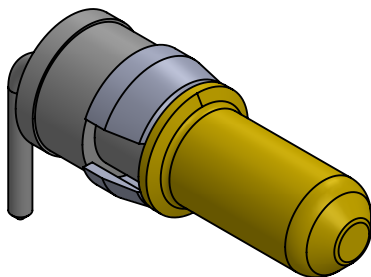
MECHANICAL CHARACTERISTICS

Insertion Force: 5 N max.

Withdrawal Force: 0.5 N max.

ENVIRONMENTAL

Temperature Range: -55° to $+125^{\circ}\text{C}$



UNLESS OTHERWISE SPECIFIED:			NAME	DATE	<div>ECSwww.ecsconn.com</div>		
DIMENSIONS ARE IN mm TOLERANCES:		DRAWN	CT	4/02			
		CHECKED					
		ENG APPR.					
		MFG APPR.					
PROPRIETARY AND CONFIDENTIAL		COMMENTS:			TITLE:		
THE INFORMATION CONTAINED IN THIS DRAWING IS THE SOLE PROPERTY OF ECS. ANY REPRODUCTION IN PART OR AS A WHOLE WITHOUT THE WRITTEN PERMISSION OF ECS IS PROHIBITED.					HIGH POWER CONTACT EXTENDED PIN RIGHT ANGLE PCB TERMINATION PLUG		
					SIZE	PART NUMBER	REV
					A	55-1P-206-1	A
					SCALE: NONE		SHEET 1 OF 1