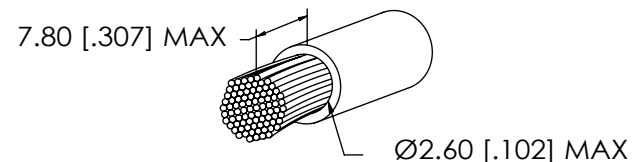
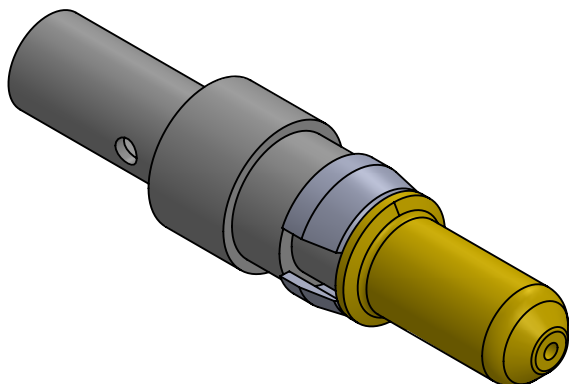


NOTE:

1. Electrical Characteristics:
Resistance: $\leq 1\text{m ohm}$
Max. Current: 20 amp
2. Mechanical Characteristics:
Connecting Operations: ≥ 500 cycles
3. Engagement Force: $\leq 10\text{N}$
4. Disengagement Force: $\geq 1.6\text{N}$
5. Enviromenta:
Temperature Range: -55°C to $+125^{\circ}\text{C}$
6. Quality Test: MIL-STD-202
7. Materials:
 1. Contact: Cu Alloy
 2. Retaining Clip: Cu Alloy
 3. Plating: Gold



CABLE DIMENSIONS



UNLESS OTHERWISE SPECIFIED:		NAME	DATE	<div>ECSwww.ecsconn.com</div> <div>TITLE: 20 AMP POWER CONTACT PLUG EXTENDED PIN STRAIGHT CRIMP WIRE SIZE AWG 12-16</div> <div>SIZEPART NO.REV A55-1P-211-1A</div> <div>SCALE: 6:1SHEET 1 OF 1</div>		
DIMENSIONS ARE IN mm TOLERANCES:	DRAWN	CT	4/17			
	CHECKED					
	ENG APPR.					
	MFG APPR.					
<div>PROPRIETARY AND CONFIDENTIAL</div> <div>THE INFORMATION CONTAINED IN THIS DRAWING IS THE SOLE PROPERTY OF ECS. ANY REPRODUCTION IN PART OR AS A WHOLE WITHOUT THE WRITTEN PERMISSION OF ECS IS PROHIBITED.</div>	COMMENTS:					