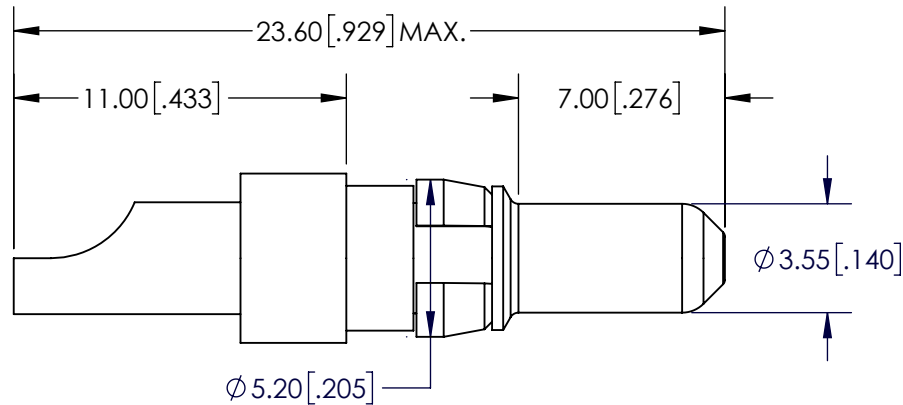
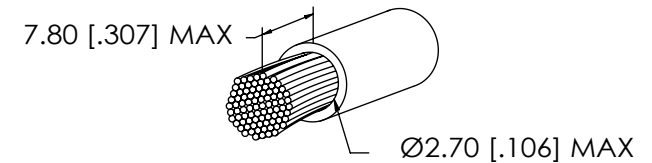
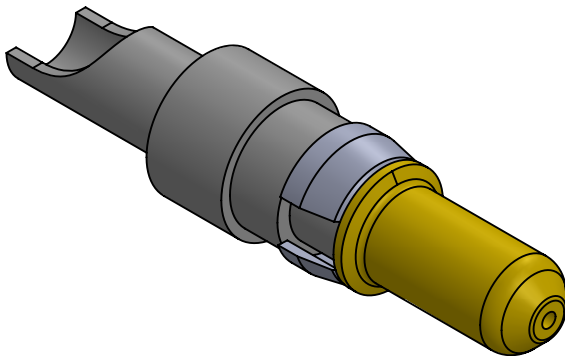


B



NOTE:

1. Electrical Characteristics:
 - Resistance: $\leq 1\text{m ohm}$
 - Max. Current: 20 amp
2. Mechanical Characteristics:
 - Connecting Operations: ≥ 500
3. Engagement Force: $\leq 10\text{N}$
4. Disengagement Force: $\geq 1.6\text{N}$
5. Enviromenta:
 - Temperature Range: -55°C to $+125^{\circ}\text{C}$
6. Quality Test: MIL-STD-202
7. Materials:
 1. Contact: Cu Alloy
 2. Retaining Clip: Cu Alloy
 3. Plating: Gold

CABLE DIMENSIONS

UNLESS OTHERWISE SPECIFIED:		NAME		DATE		<div>ECSwww.ecsconn.com</div>		
DIMENSIONS ARE IN mm TOLERANCES:	DRAWN		CT		4/17			
	CHECKED							
	ENG APPR.							
	MFG APPR.							
PROPRIETARY AND CONFIDENTIAL THE INFORMATION CONTAINED IN THIS DRAWING IS THE SOLE PROPERTY OF ECS. ANY REPRODUCTION IN PART OR AS A WHOLE WITHOUT THE WRITTEN PERMISSION OF ECS IS PROHIBITED.		COMMENTS:		TITLE: 20 AMP POWER CONTACT PLUG STRAIGHT SOLDER TERMINATION EXTENDED PIN, WIRE SIZE AWG 12-16				
				SIZE	PART NO.		REV	
				A	55-1P-214-1		A	
				SCALE: 6:1			SHEET 1 OF 1	

B

A

2

1