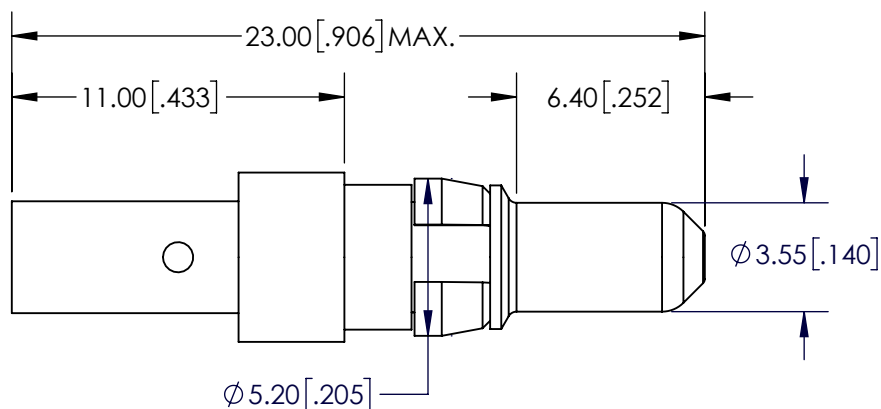
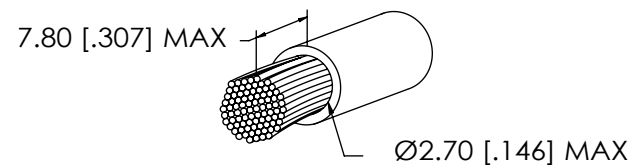


B



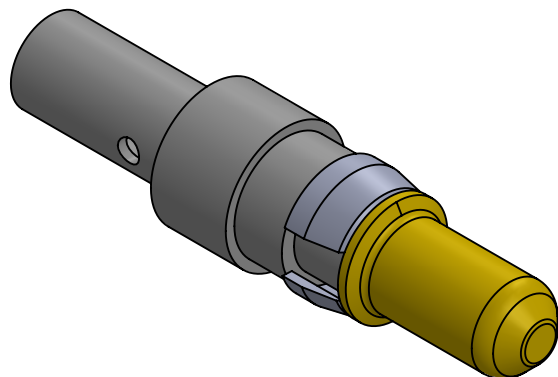
NOTE:

1. Electrical Characteristics:
Resistance: $\leq 1\text{m ohm}$
Max. Current: 30 amp
2. Mechanical Characteristics:
Connecting Operations: ≥ 500 cycles
3. Engagement Force: $\leq 10\text{N}$
4. Disengagement Force: $\geq 1.6\text{N}$
5. Enviromenta:
Temperature Range: -55°C to $+125^{\circ}\text{C}$
6. Quality Test: MIL-STD-202
7. Materials:
 1. Contact: Cu Alloy
 2. Retaining Clip: Cu Alloy
 3. Plating: Gold

CABLE DIMENSIONS

B

A



A

UNLESS OTHERWISE SPECIFIED:		NAME		DATE		<div>ECSwww.ecsconn.com</div>	
DIMENSIONS ARE IN mm TOLERANCES:	DRAWN	CT		4/17			
	CHECKED						
	ENG APPR.						
	MFG APPR.						
						TITLE: 30 AMP POWER CONTACT PLUG STRAIGHT CRIMP WIRE SIZE AWG 10-14	
PROPRIETARY AND CONFIDENTIAL		COMMENTS:					
THE INFORMATION CONTAINED IN THIS DRAWING IS THE SOLE PROPERTY OF ECS. ANY REPRODUCTION IN PART OR AS A WHOLE WITHOUT THE WRITTEN PERMISSION OF ECS IS PROHIBITED.							
		SIZE		PART NO.		REV	
		A		55-1P-301-1		A	
		SCALE: 6:1				SHEET 1 OF 1	

2

1