

PCB LAYOUT

NOTES:

Electrical characteristics:

Resistance: ≤ 1 m ohm

Max. Current: 40 Amps

Mechanical characteristics:

Connecting operations: ≥ 500

Engagement Force: ≤ 10 N

Disengagement Force: ≥ 5 N

Environmental:

Temperature range: $-55^{\circ}\text{C} \pm 125^{\circ}\text{C}$

Quality test: MIL-STD-202

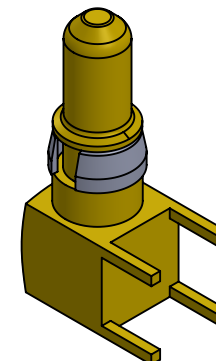
Materials:

1. Contact: Cu Alloy

2. Retaining Clip: Cu Alloy

3. Plating: Gold

Recommended hole size: 1.02 [.040]



REV.	DATE	CHK	DESCRIPTION
ECS www.ecsconn.com			Email: custsvc@ecsconn.com Orange County, California
THIS DRAWING IS SUBJECT TO CHANGE WITHOUT NOTICE		DRAWN BY: CT DATE: 12.5.2002	DESCRIPTION: 40 AMP POWER CONTACT PLUG RIGHT ANGLE PCB MOUNT
DIMENSIONS: mm [inch]		CHECKED BY: CB DATE: 12.5.2002	
UNLESS OTHERWISE SPECIFIED: TOLERANCE: .00" .000" .0000"		APPROVED BY: CB DATE: 12.5.2002	
THIS DRAWING AND SPECIFICATIONS HEREIN, ARE THE PROPERTY OF ECS, AND SHALL NOT BE REPRODUCED OR COPIED OR USED IN WHOLE OR IN PART AS THE BASIS FOR THE MANUFACTURE OR SALE OF ITEMS WITHOUT WRITTEN CONSENT OF ECS, INC.		SIZE: A	PART NUMBER: 55-1P-402-1
		SCALE: NONE	PATH: \ECS\CUSTOMER PRINTS\5500 CONTACTS\
		SHEET: 1 OF 1	REV. A