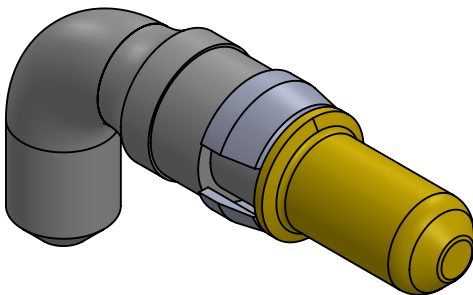
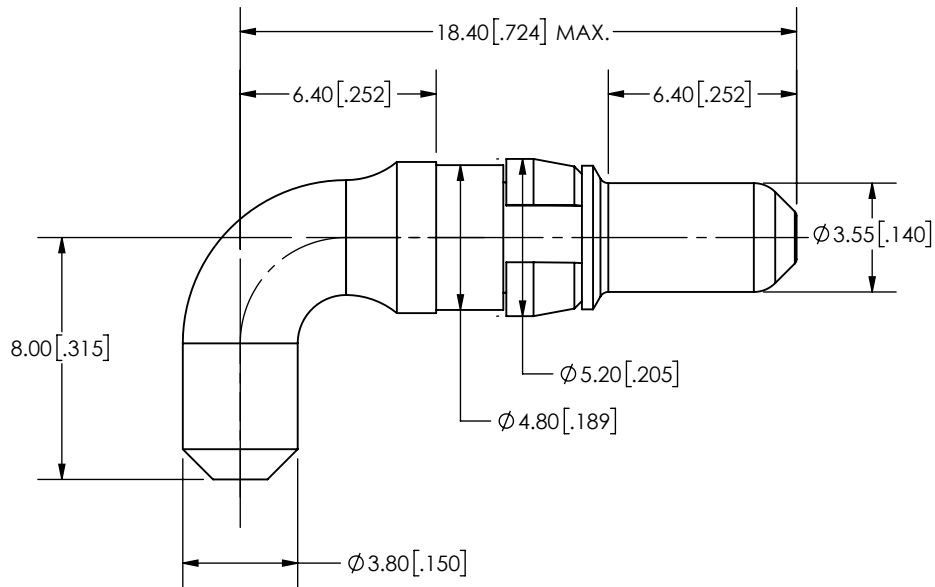


B



## NOTES:

## ELECTRICAL CHARACTERISTICS:

Resistance: 2.7 m ohm max.

Max. Current: 40 Amps.

## MECHANICAL CHARACTERISTICS:

Insertion Force: 5 N max.

Withdrawal Force: 0.60 N min.

## ENVIRONMENTAL:

Temperature Range: -55°C to +125°C

## MATERIALS:

Contact: Copper Alloy, Gold Plated level 1

Retaining Clip: Brass, Ni Plated

B

A

## UNLESS OTHERWISE SPECIFIED:

DIMENSIONS ARE IN mm  
TOLERANCES:

DRAWN

NAME

CT

DATE

4/17

CHECKED

ENG APPR.

MFG APPR.

## PROPRIETARY AND CONFIDENTIAL

THE INFORMATION CONTAINED IN THIS  
DRAWING IS THE SOLE PROPERTY OF  
ECS. ANY REPRODUCTION IN PART OR  
AS A WHOLE WITHOUT THE WRITTEN  
PERMISSION OF ECS IS PROHIBITED.

COMMENTS:

**ECS**[www.ecsconn.com](http://www.ecsconn.com)

TITLE:

HIGH CURRENT CONTACT  
40 AMP, RIGHT ANGLE PLUG

SIZE

**A**

PART NUMBER:

55-1P-403-1

REV

A

SCALE: NONE

SHEET 1 OF 1

2

1