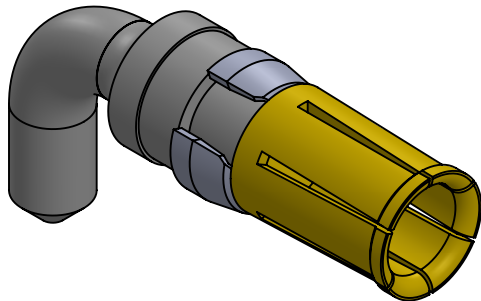
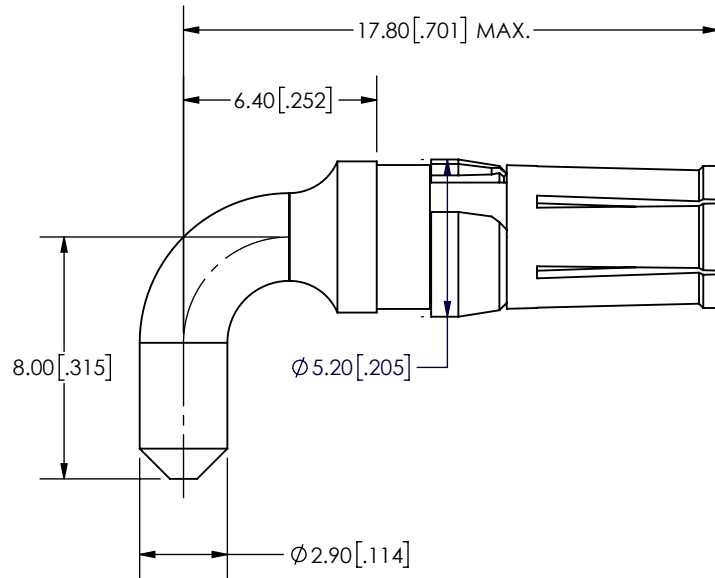


B



NOTES:

ELECTRICAL CHARACTERISTICS:

Resistance: 2.7 m ohm max.

Max. Current: 20 Amps.

MECHANICAL CHARACTERISTICS:

Insertion Force: 5 N max.

Withdrawal Force: 0.60 N min.

ENVIROMENTAL:

Temperature Range: -55°C to +125°C

MATERIALS:

Contact: Copper Alloy, Gold Plated level 1

Retaining Clip: Brass, Ni Plated

B

A

UNLESS OTHERWISE SPECIFIED:		NAME	DATE	<div>ECSwww.ecsconn.com</div>				
DIMENSIONS ARE IN mm TOLERANCES:	DRAWN	CT	4/02	TITLE: HIGH CURRENT CONTACT 20 AMP, RIGHT ANGLE SOCKET				
	CHECKED							
	ENG APPR.							
	MFG APPR.							
PROPRIETARY AND CONFIDENTIAL	COMMENTS:			SIZE	PART NUMBER:	REV		
THE INFORMATION CONTAINED IN THIS DRAWING IS THE SOLE PROPERTY OF ECS. ANY REPRODUCTION IN PART OR AS A WHOLE WITHOUT THE WRITTEN PERMISSION OF ECS IS PROHIBITED.				A	55-1S-203-1	A		
				SCALE: NONE		SHEET 1 OF 1		

A

2

1