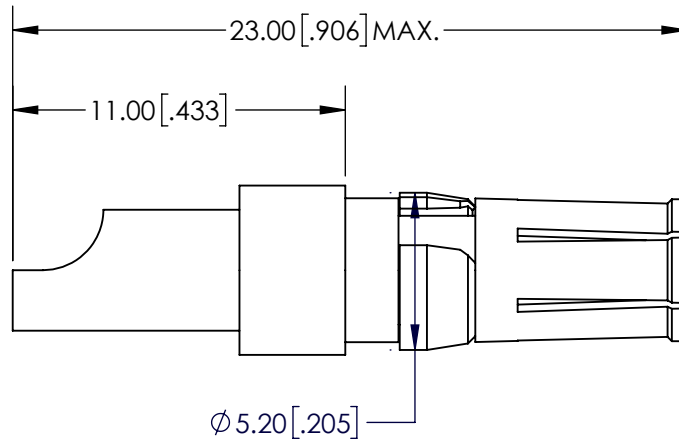
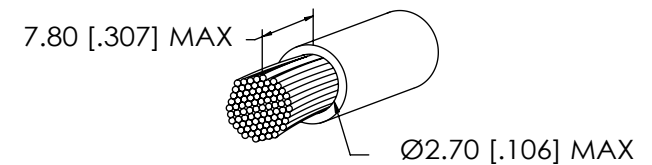
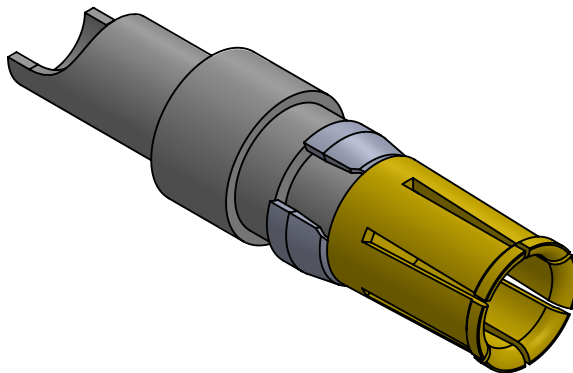


B



## NOTE:

1. Electrical Characteristics:  
Resistance:  $\leq 1\text{m ohm}$   
Max. Current: 20 amp
2. Mechanical Characteristics:  
Connecting Operations:  $\geq 500$
3. Engagement Force:  $\leq 10\text{N}$
4. Disengagement Force:  $\geq 1.6\text{N}$
5. Enviromenta:  
Temperature Range:  $-55^{\circ}\text{C}$  to  $+125^{\circ}\text{C}$
6. Quality Test: MIL-STD-202
7. Materials:
  1. Contact: Cu Alloy
  2. Retaining Clip: Cu Alloy
  3. Plating: Gold

CABLE DIMENSIONS

UNLESS OTHERWISE SPECIFIED:			NAME	DATE	<div>ECSwww.ecsconn.com</div>		
DIMENSIONS ARE IN mm TOLERANCES:		DRAWN	CT	4/17			
		CHECKED					
		ENG APPR.					
		MFG APPR.					
<div>PROPRIETARY AND CONFIDENTIAL</div> <div>THE INFORMATION CONTAINED IN THIS DRAWING IS THE SOLE PROPERTY OF ECS. ANY REPRODUCTION IN PART OR AS A WHOLE WITHOUT THE WRITTEN PERMISSION OF ECS IS PROHIBITED.</div>		COMMENTS:			TITLE:		
					20 AMP POWER CONTACT SOCKET STRAIGHT SOLDER TERMINATION WIRE SIZE AWG 12-16		
					SIZE	PART NO.	REV
					A	55-1S-204-1	A
		SCALE: 6:1			SHEET 1 OF 1		

B

A

2

1

2

1