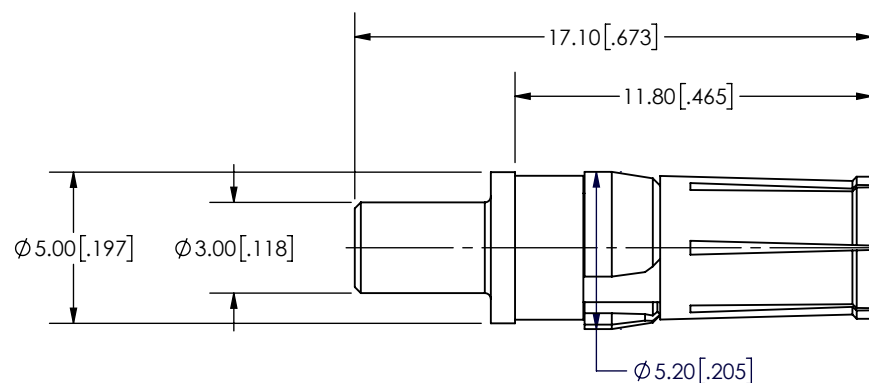
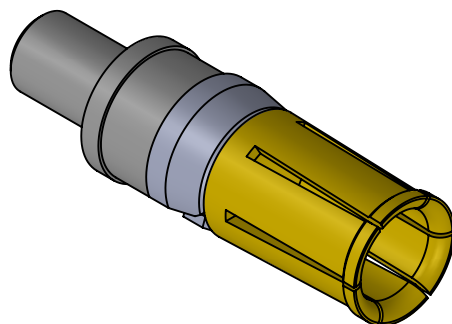


B



A



2

1

NOTES:

ELECTRICAL CHARACTERISTICS:

Resistance: 2.7 m ohm max.

Max. Current: 20 Amps.

MECHANICAL CHARACTERISTICS:

Insertion Force: 5 N max.

Withdrawal Force: 0.60 N min.

ENVIROMENTAL:

Temperature Range: -55°C to +125°C

MATERIALS:

Contact: Copper Alloy, Gold Plated level 1

Retaining Clip: Brass, Ni Plated

B

A

UNLESS OTHERWISE SPECIFIED:

DIMENSIONS ARE IN mm
TOLERANCES:

DRAWN

NAME

CT

DATE

4/02

CHECKED

ENG APPR.

MFG APPR.

PROPRIETARY AND CONFIDENTIAL

THE INFORMATION CONTAINED IN THIS
DRAWING IS THE SOLE PROPERTY OF
ECS. ANY REPRODUCTION IN PART OR
AS A WHOLE WITHOUT THE WRITTEN
PERMISSION OF ECS IS PROHIBITED.

COMMENTS:

ECSwww.ecsconn.com

TITLE:

STRAIGHT PCB TERMINATION
20 AMP, SOCKET

SIZE

A

PART NUMBER:

55-1S-207-1

REV

A

SCALE: NONE

SHEET 1 OF 1

1