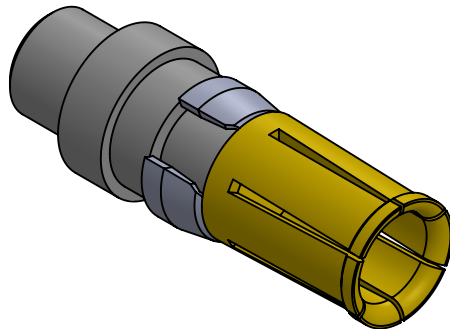
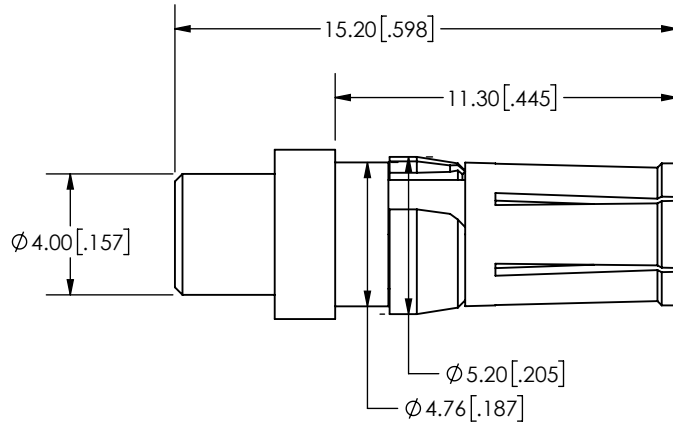


B

A



2

1

1

NOTES:

MATERIAL:

Contact material: Cu Alloy

Contact Plating: Gold over Nickel

Performance Class: 1: ≥ 500 Cycles

Body Material: Cu Alloy

Clip Material: Cu Alloy

ELECTRICAL CHARACTERISTICS

Resistance: $\leq 1\text{m ohm}$

Maximum Current: 40 Amp

MECHANICAL CHARACTERISTICS

Insertion Force: $\leq 10\text{N}$

Withdrawal Force: $\geq 5\text{N}$

ENVIRONMENTAL

Temperature Range: -55° to $+125^{\circ}\text{C}$

B

A

UNLESS OTHERWISE SPECIFIED:		NAME		DATE		<div>ECSwww.ecsconn.com</div> <div>TITLE: HIGH POWER CONTACT 40 AMP SOCKET</div>			
DIMENSIONS ARE IN mm TOLERANCES:	DRAWN		CT		4/02				
	CHECKED								
	ENG APPR.								
	MFG APPR.								
<div>PROPRIETARY AND CONFIDENTIAL</div> <div>THE INFORMATION CONTAINED IN THIS DRAWING IS THE SOLE PROPERTY OF ECS. ANY REPRODUCTION IN PART OR AS A WHOLE WITHOUT THE WRITTEN PERMISSION OF ECS IS PROHIBITED.</div>		COMMENTS:		SIZE		PART NUMBER:		REV	
				A		55-1S-217-1		A	
				SCALE: NONE				SHEET 1 OF 1	