

## NOTES:

### Electrical characteristics:

Resistance:  $\leq 1$  m ohm

Max. Current: 40 Amps

### Mechanical characteristics:

Connecting operations:  $\geq 500$

Engagement Force:  $\leq 10$ N

Disengagement Force:  $\geq 5$ N

### Environmental:

Temperature range:  $-55^{\circ}\text{C} \pm 125^{\circ}\text{C}$

Quality test: MIL-STD-202

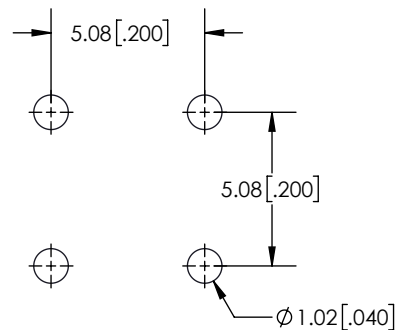
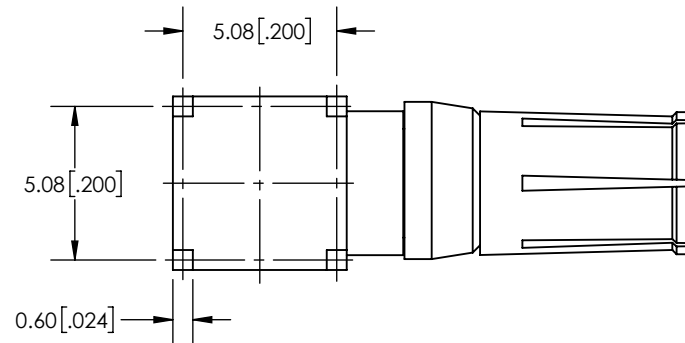
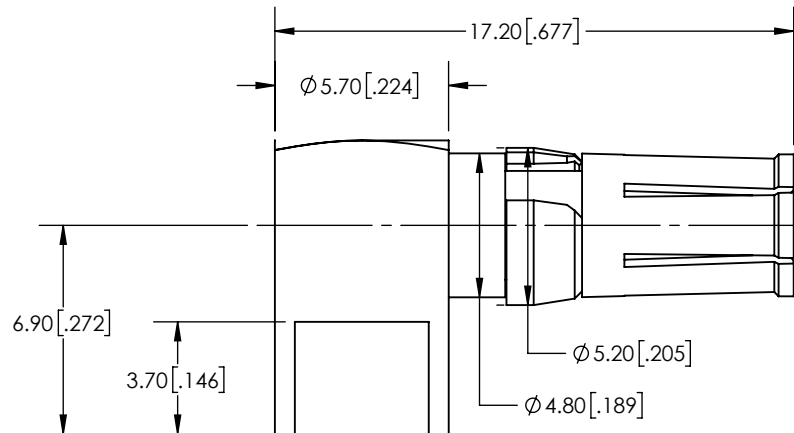
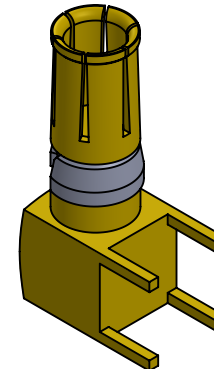
### Materials:

1. Contact: Cu Alloy

2. Retaining Clip: Cu Alloy

3. Plating: Gold

Recommended hole size: 1.02 [.040]



PCB LAYOUT

REV.	DATE	CHK	DESCRIPTION
<b>ECS</b> <a href="http://www.ecsconn.com">www.ecsconn.com</a>			Email: <a href="mailto:custsvc@ecsconn.com">custsvc@ecsconn.com</a> Orange County, California
THIS DRAWING IS SUBJECT TO CHANGE WITHOUT NOTICE		DRAWN BY: CT CHECKED BY: CB APPROVED BY: CB	DATE 12.5.2002 12.5.2002 12.5.2002 DESCRIPTION 40 AMP POWER CONTACT SOCKET RIGHT ANGLE PCB MOUNT
DIMENSIONS: mm [inch] UNLESS OTHERWISE SPECIFIED: TOLERANCE:		SIZE A SCALE NONE	PART NUMBER 55-1S-402-1 PATH \\ECS\CUSTOMER PRINTS\5500 CONTACTS\ SHEET 1 OF 1
THIS DRAWING AND SPECIFICATIONS HEREIN, ARE THE PROPERTY OF ECS, AND SHALL NOT BE REPRODUCED OR COPIED OR USED IN WHOLE OR IN PART AS THE BASIS FOR THE MANUFACTURE OR SALE OF ITEMS WITHOUT WRITTEN CONSENT OF ECS, INC.		REV. A	