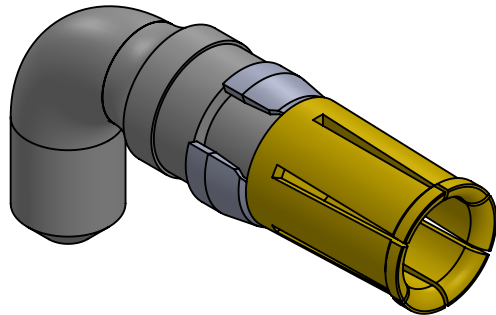
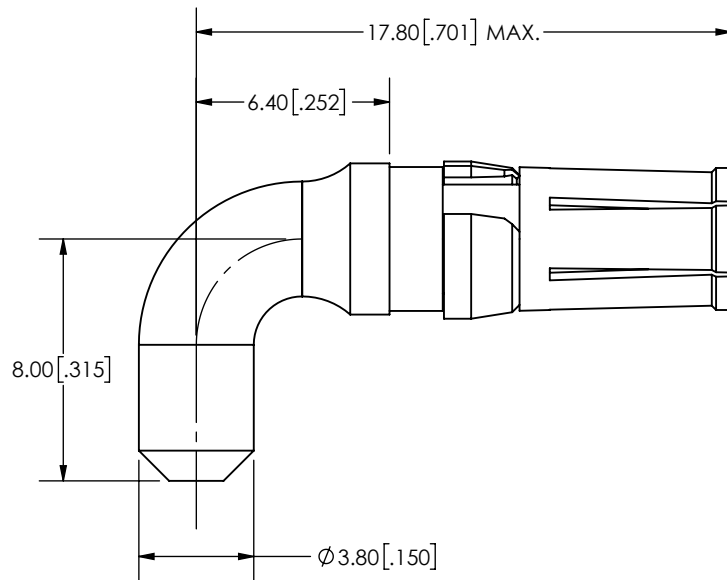


B



A

2

1

NOTES:

ELECTRICAL CHARACTERISTICS:

Resistance: 2.7 m ohm max.

Max. Current: 40 Amps.

MECHANICAL CHARACTERISTICS:

Insertion Force: 5 N max.

Withdrawal Force: 0.60 N min.

ENVIROMENTAL:

Temperature Range: -55°C to +125°C

MATERIALS:

Contact: Copper Alloy, Gold Plated level 1

Retaining Clip: Brass, Ni Plated

B

| | | | | | | |
|---|--|-----------|------|------|--|-----------------------------|
| UNLESS OTHERWISE SPECIFIED: | | | NAME | DATE | <div>ECSwww.ecsconn.com</div> | |
| DIMENSIONS ARE IN mm TOLERANCES: | | DRAWN | CT | 4/02 | | |
| | | CHECKED | | | | |
| | | ENG APPR. | | | | |
| | | MFG APPR. | | | | |
| <div>PROPRIETARY AND CONFIDENTIAL</div> <div>THE INFORMATION CONTAINED IN THIS DRAWING IS THE SOLE PROPERTY OF ECS. ANY REPRODUCTION IN PART OR AS A WHOLE WITHOUT THE WRITTEN PERMISSION OF ECS IS PROHIBITED.</div> | | COMMENTS: | | | TITLE: | |
| | | | | | HIGH CURRENT CONTACT 40 AMP, RIGHT ANGLE SOCKET | |
| | | | | | SIZE A | PART NUMBER: 55-1S-403-1 |
| | | | | | SCALE: NONE | SHEET 1 OF 1 |

A

1