

NOTES:

Electrical characteristics:

Characteristic impedance: 50 ohms
 Frequency range: 0...3GHz
 VSWR: at 500 MHz : <1.22
 Insulation resistance: 10 Mega ohms
 Test voltage: 750 V rms
 Max. contact current: 2A

Contact resistance

inner conductor: < 2.7 m ohms
 outer conductor: < 2.7 m ohms

Mechanical characteristics:

Contact forces:

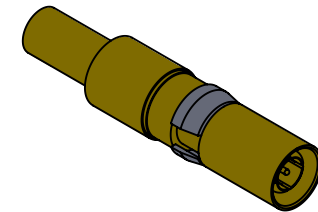
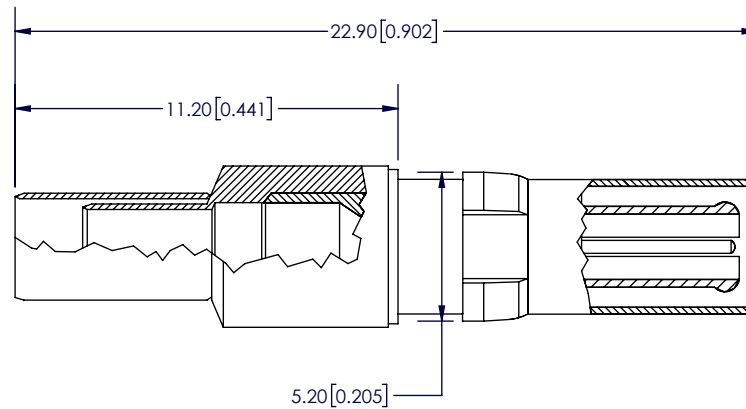
Mating force: max. 10N
 Unmating force: Inner conductor : min. .2N
 Outer conductor: min. .7N

Enviromental:

Temperature range: -55°C ± 125°C

Materials:

Outer conductor: Cu Alloy
 Inner conductor: Cu Alloy
 Retaining Clip: Cu Alloy
 Insulators: PTFE / PBT / PI



REV.	DATE	CHK	DESCRIPTION
ECS www.ecsconn.com			Email: custsvc@ecsconn.com Orange County, California

THIS DRAWING IS SUBJECT TO CHANGE WITHOUT NOTICE		DRAWN BY: AA		DATE 10.16.03		DESCRIPTION	
DIMENSIONS: mm [inch]		UNLESS OTHERWISE SPECIFIED: TOLORANCE:		CHECKED BY: BR		10.16.03	
				APPROVED BY: BR		10.16.03	
THIS DRAWING AND SPECIFICATIONS HEREIN, ARE THE PROPERTY OF ECS, AND SHALL NOT BE REPRODUCED OR COPIED OR USED IN WHOLE OR IN PART AS THE BASIS FOR THE MANUFACTURE OR SALE OF ITEMS WITHOUT WRITTEN CONSENT OF ECS.		SIZE A		DWG / PART NUMBER 55-2S-110-1			REV. A
		SCALE NONE		PATH \\ECS\ENGINEERING PRINTS\5500 CONTACTS\			SHEET 1 OF 1